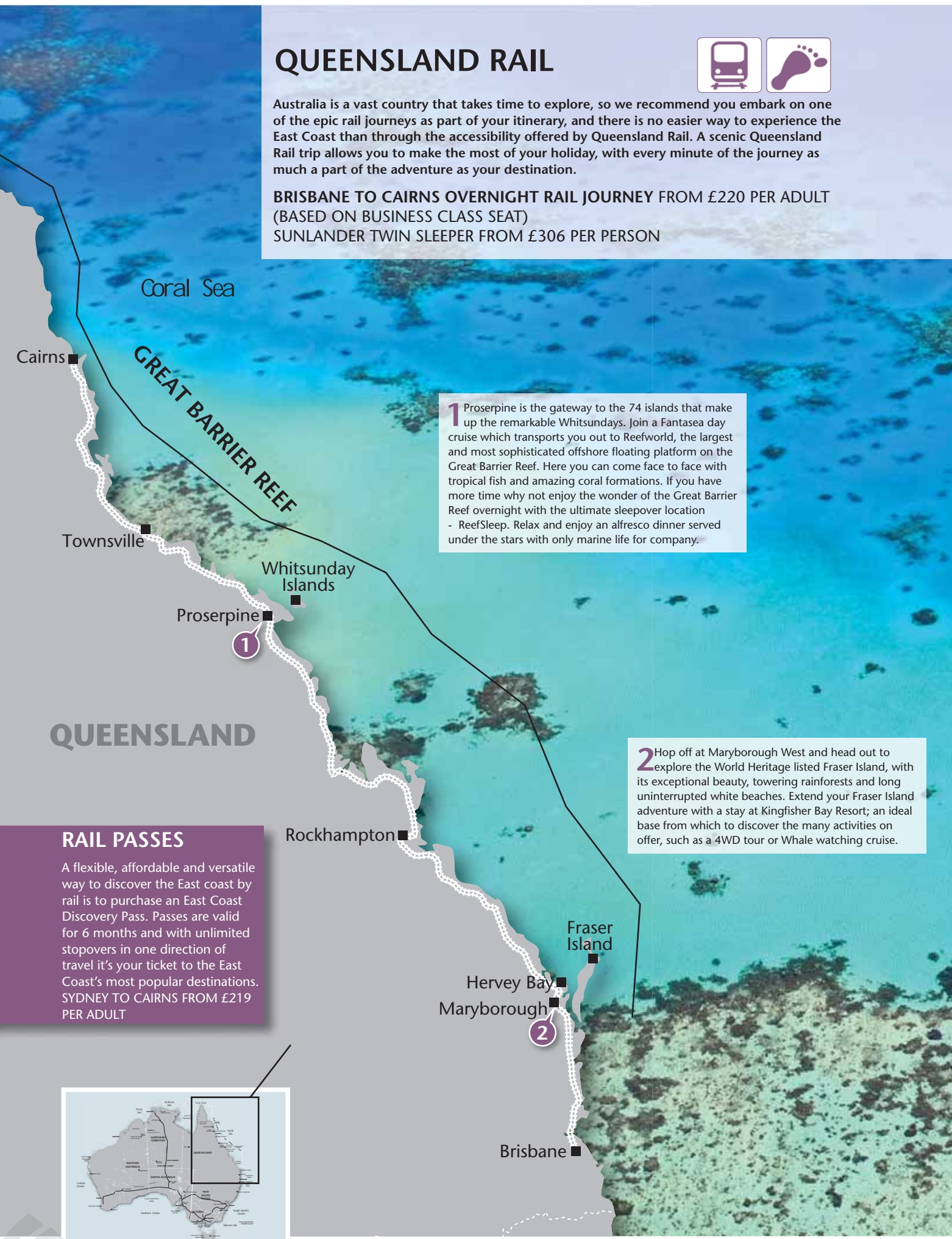


QUEENSLAND RAIL



Australia is a vast country that takes time to explore, so we recommend you embark on one of the epic rail journeys as part of your itinerary, and there is no easier way to experience the East Coast than through the accessibility offered by Queensland Rail. A scenic Queensland Rail trip allows you to make the most of your holiday, with every minute of the journey as much a part of the adventure as your destination.

BRISBANE TO CAIRNS OVERNIGHT RAIL JOURNEY FROM £220 PER ADULT (BASED ON BUSINESS CLASS SEAT)
SUNLANDER TWIN SLEEPER FROM £306 PER PERSON



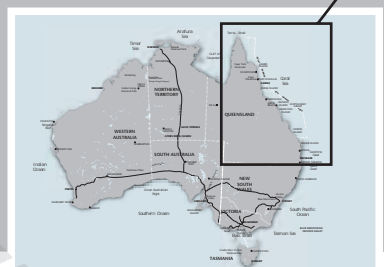
1 Proserpine is the gateway to the 74 islands that make up the remarkable Whitsundays. Join a Fantasea day cruise which transports you out to Reefworld, the largest and most sophisticated offshore floating platform on the Great Barrier Reef. Here you can come face to face with tropical fish and amazing coral formations. If you have more time why not enjoy the wonder of the Great Barrier Reef overnight with the ultimate sleeper location - ReefSleep. Relax and enjoy an alfresco dinner served under the stars with only marine life for company.

2 Hop off at Maryborough West and head out to explore the World Heritage listed Fraser Island, with its exceptional beauty, towering rainforests and long uninterrupted white beaches. Extend your Fraser Island adventure with a stay at Kingfisher Bay Resort; an ideal base from which to discover the many activities on offer, such as a 4WD tour or Whale watching cruise.

QUEENSLAND

RAIL PASSES

A flexible, affordable and versatile way to discover the East coast by rail is to purchase an East Coast Discovery Pass. Passes are valid for 6 months and with unlimited stopovers in one direction of travel it's your ticket to the East Coast's most popular destinations. SYDNEY TO CAIRNS FROM £219 PER ADULT



WAYS TO TRAVEL

TILT TRAIN

Reaching up to 160km per hour, the Tilt Train gets its name because it gently tilts to take curves at speed and delivers its passengers faster than any other train. Travelling between Brisbane and Cairns, the tilt stops at Maryborough West and Proserpine for Fraser Island and the Whitsundays, giving you quick and easy access to some of the best areas in Australia.



THE SUNLANDER

The Sunlander offers a comfortable and affordable way to travel the East Coast of Queensland as it journeys between Brisbane and Cairns. Chosen as one of the world's top 25 rail journeys, see the Queensland coastline unfold as you relish in the comfort and unforgettable social atmosphere of a traditional train service.



QUEENSLANDER CLASS

For a premium rail experience choose to travel in style in Queenslander class onboard the Sunlander. Dining in Queenslander class is one of the true highlights of your journey. Enjoy gourmet meals complemented by award winning Australian wines. All meals are served in the restaurant car which is exclusive to Queenslander class guests. After dinner relax in the exclusive Queenslander class lounge and enjoy a drink with fellow passengers whilst watching the spectacular scenery as it passes you by.

Austravel Secrets..

Limited for travel time? Rail is a fast and easy alternative – fall asleep in Brisbane and wake up the next morning in Cairns with stunning views of the Great Barrier Reef.



EXPLORE WESTERN AUSTRALIA

Western Australia has something to offer for everyone! The relaxed city of Perth is close to the historic town of Fremantle, the quokkas of Rottnest Island and the wineries of Swan Valley. The Southwest offers ancient Karri Forests and the picturesque Margaret River wine region. North along the coast is Coral Bay and Monkey Mia for close encounters with dugongs and Whalesharks, while further north lies a true Outback experience of the Gibb River Road and the Kimberley region, an area of unparalleled beauty.



MOTORHOMES

With depots in Broome and Perth, Apollo motorhomes provide the space and freedom with which to travel the coast of Western Australia. You'll find a whole host of camping grounds in spectacular locations at which to break your journey.



SELF DRIVES

Choose an itinerary to suit your budget and timeframe; pick up a car and spend 3 to 4 days experiencing all the Margaret River has to offer, travel the South West on a 6 day journey up to the stunning Coral Coast, or alternatively take the trip of a lifetime from Perth all the way north to Broome on the Gibb River Road (see page 38) – a road trip you'll never forget! We've got a range of accommodation offers for you to mix and match on your journey, from hotels to lodges, luxury camps to seaview apartments.



ESCORTED TOURING

Leave the driving to someone else on an Escorted Tour with an expert guide. Our favourite is APT's West Coast Adventure which travels the length of the coast from Perth to Broome, stopping off at all the highlights such as Monkey Mia, Ningaloo Reef and the stunning Cable Beach.

18 DAY WEST COAST ADVENTURE FROM £4,195 PER ADULT



Stand in the warm shallow waters at Monkey Mia surrounded by wild dolphins, explore the mystical Pinnacles rock formations, and trek through mighty Karri forest in Pemberton.

FROM	TO	DISTANCE	DRIVING TIME
PERTH	GERALDTON	431 KMS	4 HRS 45 MINS
GERALDTON	KALBARRI	155 KMS	1 HR 45 MINS
KALBARRI	MONKEY MIA	399 KMS	4 HRS
MONKEY MIA	CARNARVON	354 KMS	4 HRS 45 MINS
CARNARVON	CORAL BAY	238 KMS	3 HRS 15 MINS
CORAL BAY	EXMOUTH	152 KMS	2 HRS 45 MINS
EXMOUTH	KARRATHA	553 KMS	7 HRS
KARRATHA	PORT HEDLAND	242 KMS	2 HRS 45 MINS
PORT HEDLAND	BROOME	612 KMS	6 HRS 45 MINS

Kimberleys

1

1 Kimberley Dreamtime – Head from Broome to picturesque Mount Anderson, where your Aboriginal Elder guide, Harry Watson, will take you on a camel safari through the Grant Ranges. An amazing and insightful tour uncovers local bush tucker, tracker skills and traditional art and living sites.
DAY TOUR FROM BROOME FROM £170 PER PERSON

Cape Leveque

2

2 Cape Leveque – Located at the northernmost tip of the Dampier Peninsula, Cape Leveque is the real Kimberley Experience. Take a short boat ride to explore the waters of the King Sound and a local lunch of Cone Bay Barramundi and chips before swimming by the pristine beaches.
DAY TOUR FROM BROOME FROM £172 PER PERSON

Broome

3

3 Broome – Explore Broome’s past and present, from the pearling history to ancient sandstone formations at Gantheaume Point. A camel ride along Cable beach at sunset is a must!
HALF DAY BROOME TOUR FROM £99 PER ADULT

Port Hedland

Karratha

4 Exmouth – Head out in Lighthouse Bay or to the Muiron Islands for spectacular diving, or opt for a sumptuous al fresco seafood meal in one of the many popular restaurants.

Exmouth

4

Ningaloo Reef

5

5 Ningaloo Reef – One of the largest fringing coral reefs in the world, and accessible right from the beach for amazing snorkelling.

Coral Bay

6

6 Coral Bay – A snorkellers paradise! – with whalesharks visiting from March to June, while on evenings between December and February you may be lucky enough to spot turtles laying their eggs on the beaches.
SNORKEL WITH THE WHALESHARKS FROM £242 PER PERSON

Monkey Mia

7

7 Monkey Mia – Renowned for its friendly bottle-nosed dolphins that swim to shore each day, meet these gracious mammals and become captivated by their intelligence and charm.

Austravel Secret
Stay at Monkey Mia Dolphin Resort and upgrade to a Beachfront Villa – there are dolphins on your doorstep!

Kalbarri

8

8 Kalbarri – Plunge into the beautiful gorges of Kalbarri National Park, looking out for ‘Nature’s Window’ – an arch formation that provides a picture perfect view of the river 150 metres below.

Geraldton

9

9 Geraldton – Visit the impressive Aboriginal Art Gallery whilst passing through, just an hour north you’ll find the Hutt River Province - Australia’s only independent territory complete with it’s own souvenir postage stamps, coins and bank notes up for grabs!

NAMBUNG NAT.PARK

10

10 Pinnacles – With it’s amazing moon-like landscape, view the Pinnacles rock formations in Nambung National Park.
DAY TOUR FROM PERTH FROM £128 PER PERSON

11 Rottnest Island – Head out from Perth to explore the pristine ecology of Rottnest, with beautiful beaches, bay, reefs and resident Quokkas – small marsupials found only in Western Australia.
DAY TOUR FROM PERTH FROM £111 PER PERSON

Rottnest Island



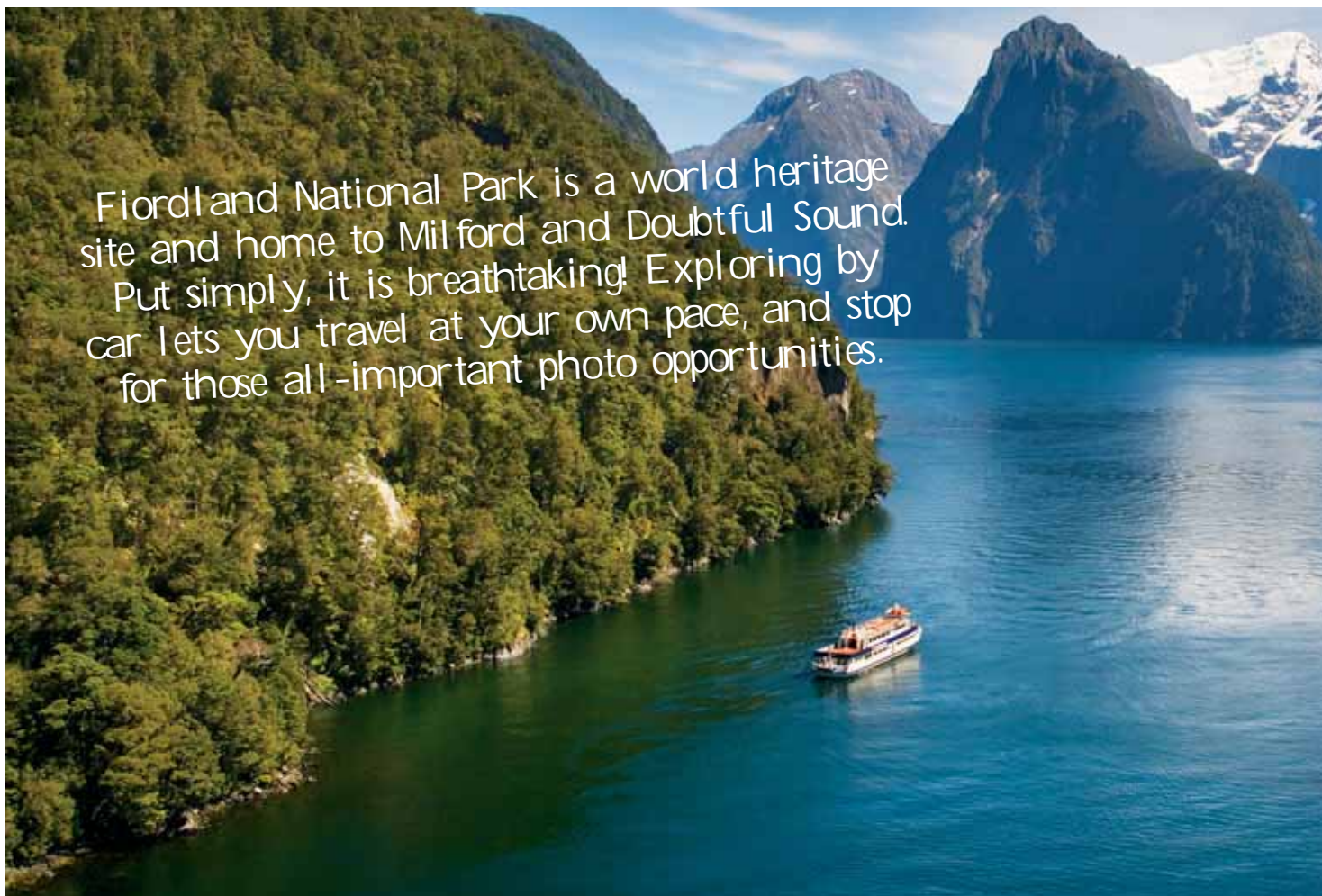
Perth

11

100miles
200kms

WESTERN AUSTRALIA





Fiordland National Park is a world heritage site and home to Milford and Doubtful Sound. Put simply, it is breathtaking! Exploring by car lets you travel at your own pace, and stop for those all-important photo opportunities.

NEW ZEALAND RAIL AND ROAD ADVENTURE



Discover New Zealand by car, rail and even boat, on this fourteen day self drive itinerary by Kirra holidays. Travel from Auckland to Wellington, on the Overlander Train, before setting sail on the Interislander ferry to the rugged South Island. The TranzCoastal train continues toward Christchurch, before the TranzAlpine meanders through the Southern Alps. Explore Queenstown and the Southern lakes region by car, including a Milford Sound Cruise and the iconic Taieri Gorge railway at Dunedin.

14 DAY SELF DRIVE FROM £1,159 PER ADULT

DAY 1 **Arrive Auckland** Arrive in Auckland, transfer to your hotel and the rest of the day is at your leisure.

DAY 2 **Auckland** Today you are free to explore a little further afield, a short cruise across to Waiheke Island is a great way to start your holiday in New Zealand. Explore Waiheke's boutique wine industry and take advantage of an all day bus pass allowing you to further explore the island before returning by ferry.

DAY 3 **Auckland - Wellington** Enjoy the 'Overlander' train trip where you will see some of the North Island's best scenery, including the Tongariro National Park with its three volcanic peaks.

Please Note: The Overlander runs on Friday, Saturday & Sunday from May - September before resuming daily services.

DAY 4 **Wellington** Enjoy a full day to explore Wellington, voted Lonely Planets 'Coolest Little Capital in the World' 2011.



DAY 5 **Wellington - Christchurch** Board the Interislander Ferry to Picton and then connect with the Coastal Pacific train through to Christchurch. The journey takes in the coastline pinned between the Pacific Ocean and the dramatic Kaikoura mountains. Arrive into Christchurch and transfer to your hotel.

DAY 6 **Christchurch - Franz Josef** Transfer from your accommodation before boarding the TranzAlpine train which cuts across the Canterbury Plains before arriving into the wonderfully lush dense forest of the wild West Coast. Upon arrival collect your Avis hire car at Greymouth Railway Station. Heading south travel along the West Coast to the twin glaciers of Franz Josef and Fox Glacier.

DAY 7 **Franz Josef - Queenstown** Drive down the wild West Coast through Fox Glacier continuing south and inland over Haast Pass, through Wanaka to the alpine resort of Queenstown.

DAY 8 **Queenstown** Today drive 48kms south to Kingston where the premier attraction is the restored vintage steam train known as 'The Kingston Flyer.' Enjoy a round trip on this famous train which carries visitors on a memorable scenic journey to Fairlight and back.

DAY 9 **Queenstown** Further leisure time to explore Queenstown. This evening consider the Skyline Gondola and Restaurant where you will dine overlooking the twinkling lights of Queenstown; alternatively cruise across Lake Wakatipu on the TSS Earnslaw steamship and enjoy dinner at the Homestead at Walter Peak.



FROM	TO	DISTANCE	DRIVING TIME
GREYMOUTH	FRANZ JOSEF	177 KM	2 HRS 30 MINS
FRANZ JOSEF	QUEENSTOWN	404 KMS	6 HRS
QUEENSTOWN	TE ANAU	412 KMS	6 HRS
TE ANAU	DUNEDIN	290 KMS	4 HRS
DUNEDIN	CHRISTCHURCH	362 KMS	5 HRS

Ask your Travel Designer about Kirra Tours escorted coach options too.

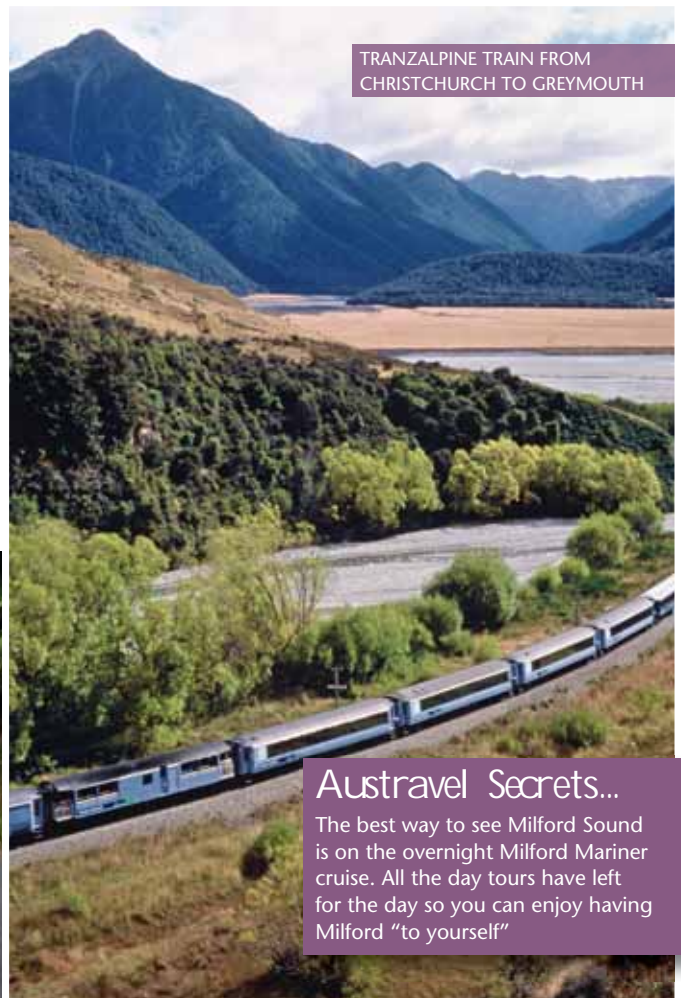
DAY 10 **Queenstown - Te Anau** Depart Queenstown early and skirt the southern shores of Lake Wakatipu crossing rural farmlands to Lake Te Anau. Take a short drive to view the picturesque Lake Manapouri before reaching Te Anau then on to Milford Sound for your scenic cruise, an absolute essential highlight of any New Zealand visit.

DAY 11 **Te Anau - Dunedin** Today venture off the beaten track and travel the ancient Catlin's Coast as you head towards Dunedin. Heading towards the coast you cross the Clutha River at Balclutha and then onto the Otago Peninsula as you arrive into Dunedin.

DAY 12 **Dunedin** Today you will enjoy a trip along the Taieri Gorge Railway, from Dunedin to Pukerangi return. Tonight you may choose to take a Speights Brewery Tour followed by a 3 course meal in the neighbouring Speights Ale House.

DAY 13 **Dunedin - Christchurch** Departing north along the coast, stop at the huge cylindrical boulders scattered along Moeraki Beach like giant marbles. Continue along the coast crossing the Canterbury Plains to Christchurch.

DAY 14 **Depart Christchurch** Free time today before returning your hire car to Christchurch Airport for your onward journey.



TRANZALPINE TRAIN FROM CHRISTCHURCH TO GREYMOUTH

Austravel Secrets...
The best way to see Milford Sound is on the overnight Milford Mariner cruise. All the day tours have left for the day so you can enjoy having Milford "to yourself"

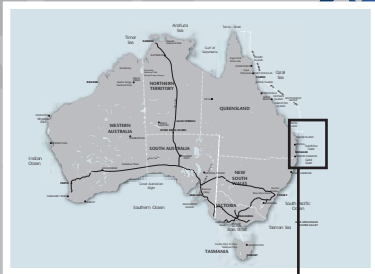


SUNSHINE & GOLD COAST

The Sunshine Coast pristine stretch of coastline is home to laid back towns and national parks overlooking the Pacific Ocean. The beautiful beaches around Noosa, Mooloolaba and Maroochydore are a haven for surfers and kayakers.

The Gold Coast stretches for 70km, boasting glorious beaches, the excitement of major theme parks, and the lush Queensland hinterland. This is the perfect getaway in which to relax and immerse yourself in the Australian surf culture.

20miles
50kms



1 Noosa – Home to stylish boutiques, a host of gourmet restaurants, and some of the best surf in the area.

2 Coolum – Learn to surf at Coolum Beach, or opt to laze in the sun at peaceful Mudjimba or Marcoola Beaches.

3 Mooloolaba – A quiet coastal township offering stunning walks up to the lighthouse at Point Cartwright, a picturesque marina and sweeping views of Mount Coolum.

4 Glass House Mountains – To the west of the Sunshine Coast in the Hinterland are the Glass House Mountains, a spectacular string of 20 million year old volcanic cones rising high from the coastal plain.

5 Tamborine National Park – One of Queensland's best kept secrets is the mountainous rainforest region which lies 40 minutes inland from the Gold Coast around Mount Tamborine.

11 Lamington National Park – World heritage listed Lamington National Park is known for its natural beauty, waterfalls, walking tracks and mountainous views.

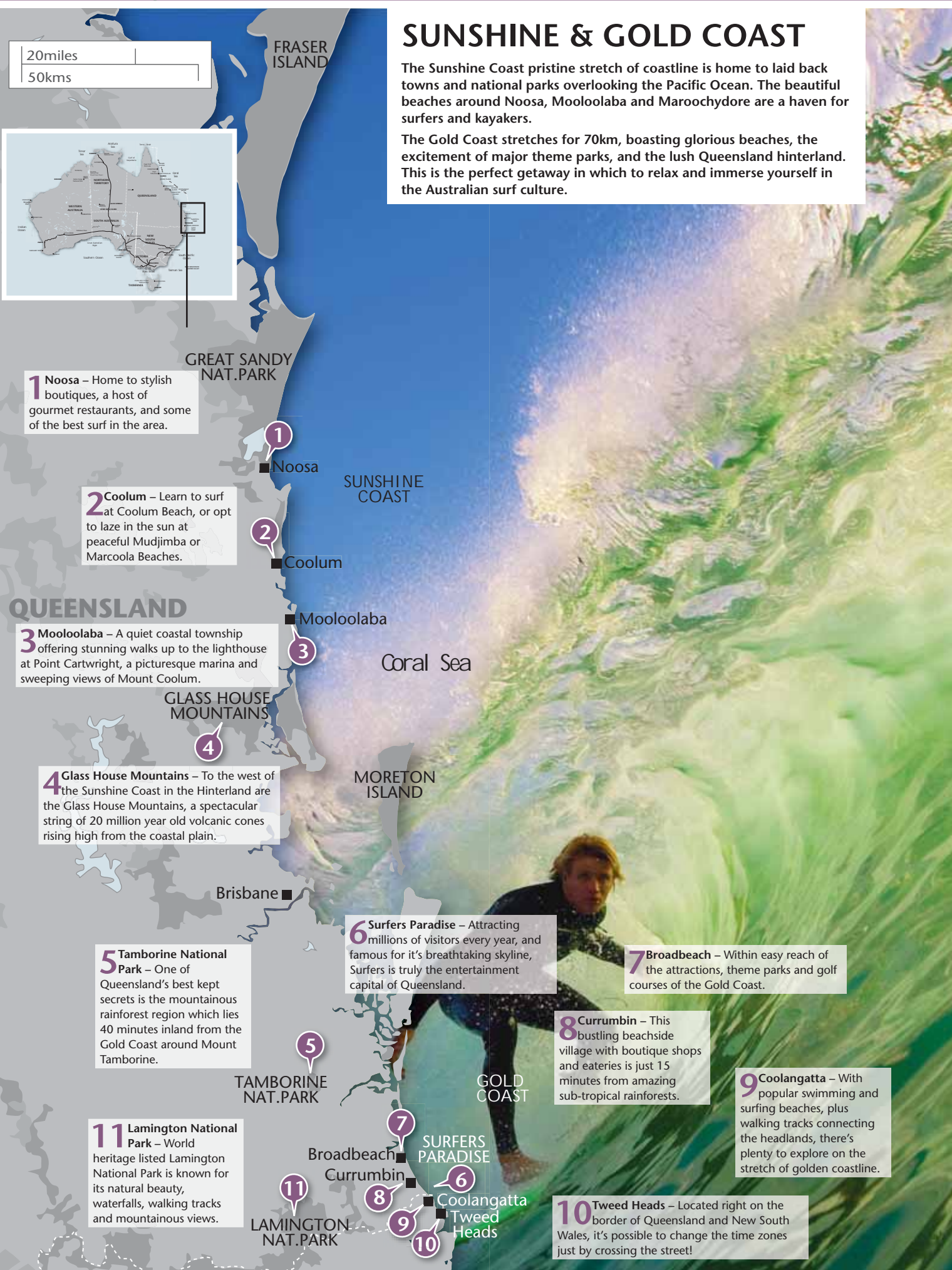
6 Surfers Paradise – Attracting millions of visitors every year, and famous for its breathtaking skyline, Surfers is truly the entertainment capital of Queensland.

7 Broadbeach – Within easy reach of the attractions, theme parks and golf courses of the Gold Coast.

8 Currumbin – This bustling beachside village with boutique shops and eateries is just 15 minutes from amazing sub-tropical rainforests.

9 Coolangatta – With popular swimming and surfing beaches, plus walking tracks connecting the headlands, there's plenty to explore on the stretch of golden coastline.

10 Tweed Heads – Located right on the border of Queensland and New South Wales, it's possible to change the time zones just by crossing the street!





SURFER'S PARADISE

GOLD COAST & SUNSHINE WAY DRIVE

Explore the highlights of both the Sunshine and Gold Coast with this suggested itinerary. This can be adapted to suit your preferences, or time limitations.



10 DAY SELF DRIVE FROM £812 PER ADULT

DAY 1 Brisbane – Surfers Paradise Depart Brisbane and head south to Surfers Paradise, the main hub of the Gold Coast.

DAY 2 Gold Coast Day at leisure on the Gold Coast.

DAY 3 Surfers Paradise – Lamington National Park Head inland from Surfers Paradise past Mount Tamborine and along the winding roads towards the sub-tropical Lamington National Park.

DAY 4 Lamington National Park Take today to immerse yourself in the rainforest surroundings, with plenty of wildlife to spot.

DAY 5 Lamington National Park – Mooloolaba Head back north, bypassing Brisbane, towards the Sunshine Coast resort of Mooloolaba.

DAY 6 Mooloolaba Plenty of options today, such as taking a short walk along the coast to neighbouring Maroochydore, kayak the surf, or simply relaxing on the pristine sands.

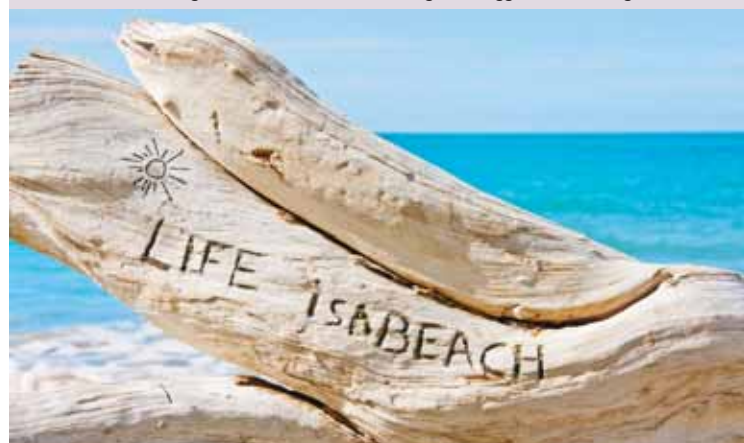
DAY 7 Mooloolaba – Noosa Continue north along the Sunshine Coast highway, to the stylish Noosa area, with a diverse natural environment, and a mix of untouched beaches and rainforest.

DAY 8-9 Noosa The next two days are free to explore the Noosa area - wander along the beach, or into the Noosa National Park, with the Mt Tinbeerwah lookout just a short walk from the main area Hastings Street.

DAY 10 Noosa – Brisbane Head back south to Brisbane to pick up your ongoing flights, or maybe continue north along the coast via Rockhampton towards the many islands of the Whitsundays region.

FROM	TO	DISTANCE	DRIVING TIME
BRISBANE	SURFERS PARADISE	80 KMS	1 HR
SURFERS PARADISE	LAMINGTON NATIONAL PARK	85 KMS	1 HR 30 MINS
LAMINGTON NATIONAL PARK	MOOLOOLABA	215 KMS	3 HRS
MOOLOOLABA	NOOSA	40 KMS	1 HR
NOOSA	BRISBANE	150 KMS	2 HRS

Package includes: Ten days group B car hire with Avis; two nights Vibe Gold Coast; two nights O'Reillys Rainforest Retreat; two nights Mantra Mooloolaba; three nights Outrigger Noosa Hastings Street



SUNSHINE COAST ESSENTIAL EXPERIENCES

Fraser Island – World heritage listed Fraser Island is the largest sand island in the world, with over 100 fresh water lakes, ancient rainforest and a diverse range of mammals and birds. Take a 4WD drive day tour from Noosa to explore the Island's highlights. DAY TOUR FROM £112 PER PERSON

Explore the Noosa Everglades – This spectacular stretch of coastline is a refuge for plants, animals and birds, including many endangered species. Take a journey down the Noosa River and explore the boardwalks that run through the wetlands. DAY TOUR FROM £47 PER PERSON

Australia Zoo – Made famous by the 'The Crocodile Hunter' – the late Steve Irwin, explore the numerous shows and demonstrations, including crocodile feeding and snake handling. DAY TOUR FROM BRISBANE FROM £76 PER PERSON

GOLD COAST ESSENTIAL EXPERIENCES

Ballooning – An early morning start, but one which will provide a lifetime experience! After helping inflate the balloon at sunrise, float over the Gold Coast hinterland on a 30 minute epic journey, followed by a hot breakfast and champagne at O'Reillys Vineyard. FROM £136 PER PERSON

Whale watching – Between the months of June and October up to 10,000 whales pass Stradbroke Island as part of their annual migration to warmer waters. Head out from the Gold Coast to catch sight of these magnificent Humpback Whales. MORNING TOUR FROM £61 PER PERSON



KIMBERLEY EXPEDITION CRUISE



A 10-night exploration voyage to the Kimberley has so many highlights, it's hard to know where to begin. Choose between two cruises, Coral Princess or Oceanic Discoverer, both of which follow the same route between Darwin and Broome, or vice versa. These are unique frontier centres and are the gateways to the magnificent Kimberley wilderness.

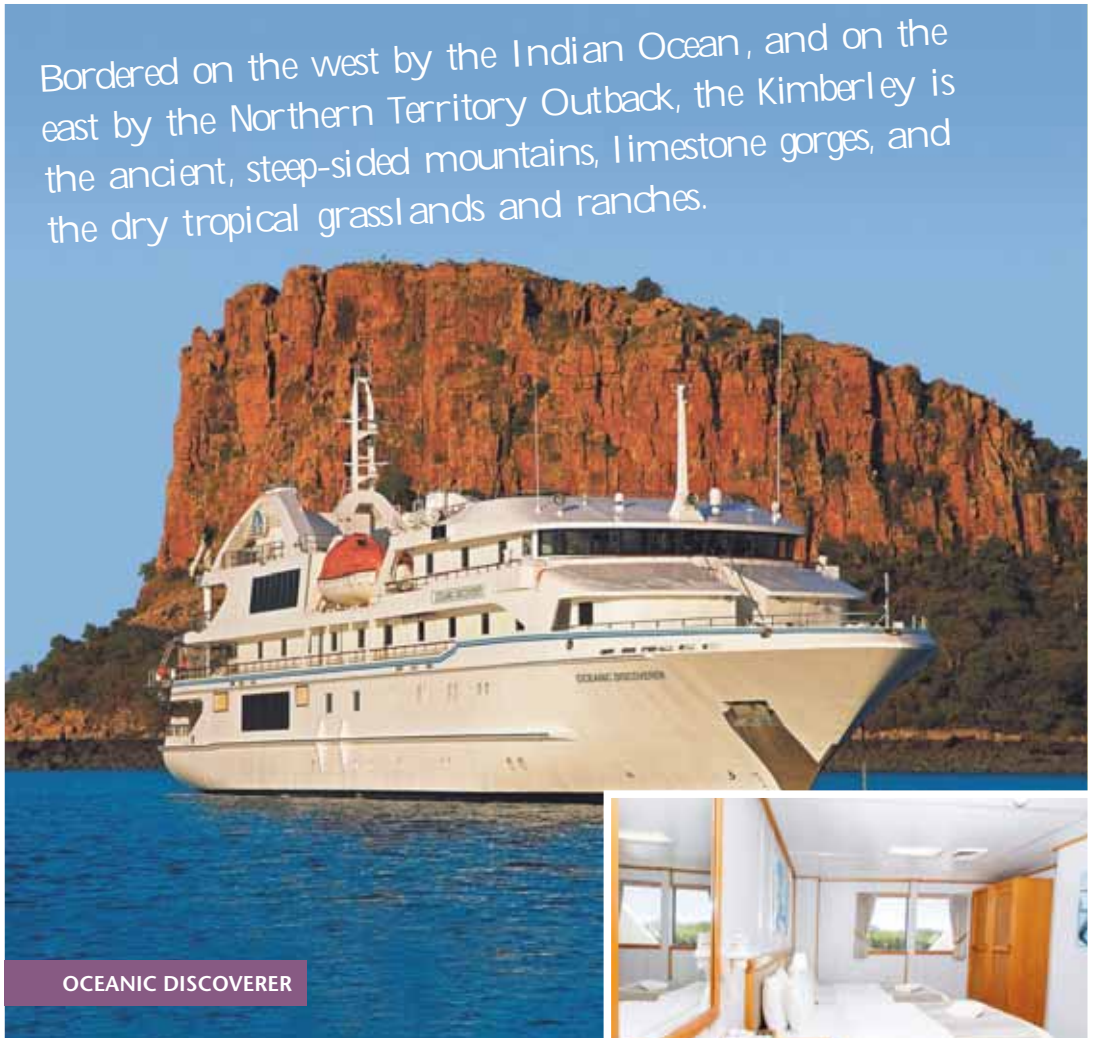
The specially designed excursion vessel allows you to explore the gorges of the Mitchell, King George, Prince Regent and Hunter Rivers, and optional helicopter flights to the Mitchell Plateau are also available.

10 NIGHT CRUISE FROM £4,275 PER ADULT

DAY 1 **Depart Darwin** Board your Coral Princess Cruise ship for a morning departure. Departing Darwin Harbour cross Cambridge Gulf and sail into Western Australian waters. This evening meet your fellow travellers and friendly crew and enjoy the Captain's Welcome Aboard Cocktails.

DAY 2 **King George River** Today discover the first of the Kimberley's 'big' rivers, the mighty King George. Aboard Xplorer, our specially designed excursion vessel, explore scenic gorges, and in our inflatable zodiacs cruise close to the base of magnificent King George Falls, the tallest waterfalls in Western Australia towering some 80 metres above the river below. Later, visit Tranquil Bay for beach walking and exploration.

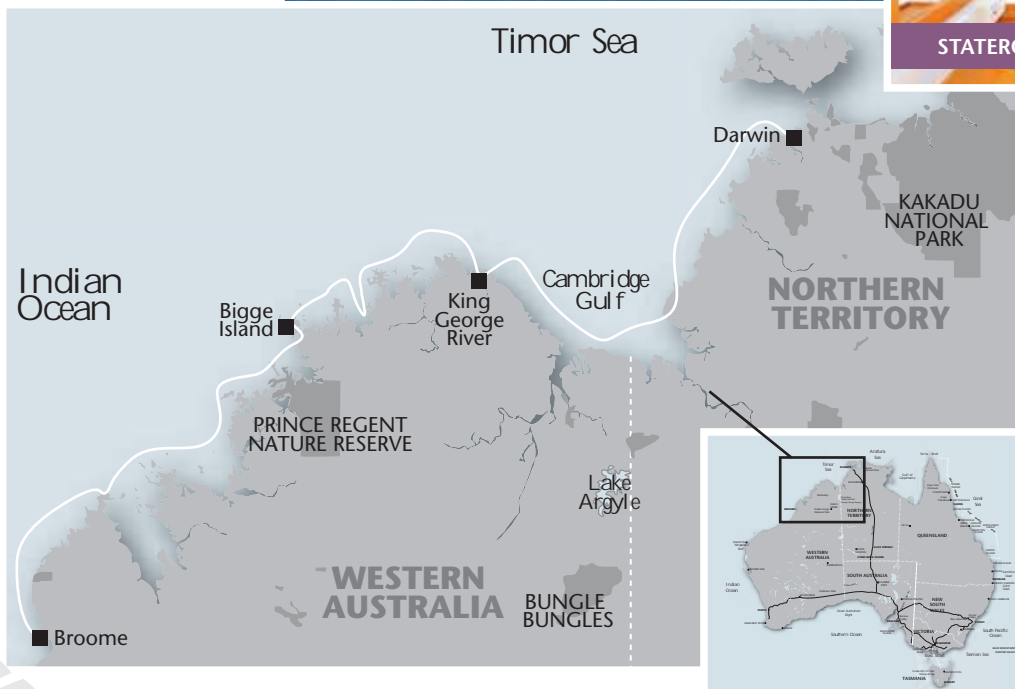
DAY 3 **Bigge Island and Aboriginal Art** This morning visit the sea bird rookeries on Low Rocks, followed by a stop at Cape Voltaire for a swim and beach exploration. This afternoon discover the amazing rock art gallery on Bigge Island.



OCEANIC DISCOVERER



STATEROOM



DAY 4 **Prince Frederick Harbour** Cruising into Prince Frederick Harbour anchor at Naturalist Island. We have helicopters available for optional scenic flights over the Mitchell Plateau for close up views of the mighty four-tiered Mitchell Falls. This evening, enjoy a spectacular Indian Ocean sunset and indulge in a gourmet Aussie Beach BBQ.

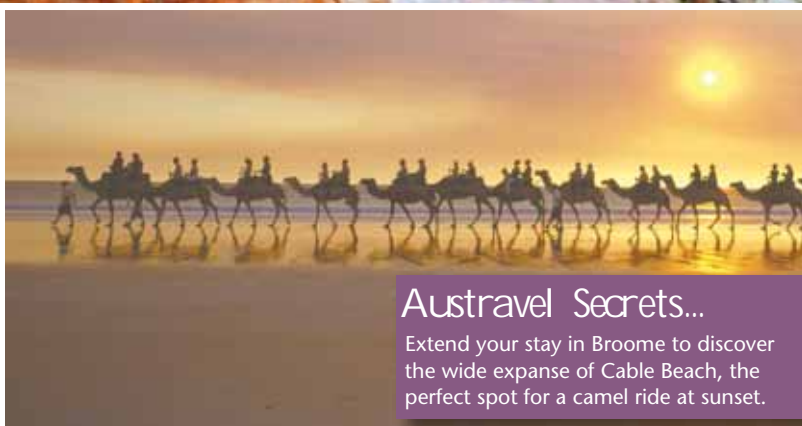
DAY 5 **Careening Bay** Careening Bay was named by Phillip Parker King after his ship, 'HMC Mermaid', was careened during his second voyage of discovery in the Kimberley. Our lecturers lead us to the site of a large boab tree bearing the inscription "HMC Mermaid - 1820", still clearly visible almost 200 years later. This afternoon cruise into the very scenic Prince Regent Basin.

We don't just go there, we know there



DAY 6 Prince Regent River and King Cascades Cruise the mighty Prince Regent River aboard Xplorer to breathtaking King Cascades, an unusual and picturesque waterfall cascading over terraced rock formations. Enjoy a picnic lunch at beautiful Camp Creek, where there is time for a leisurely swim in the fresh water pools. The more adventurous may wish to join a nature walk, keeping an eye out for native Kimberley birdlife.

DAY 7 Kuri Bay and Raft Point Today cruise through Kuri Bay, home of the south sea pearl industry. Travelling ashore at Raft Point we visit a secluded and very interesting Aboriginal rock art gallery to view Wandjina art and the mysterious Bradshaw Paintings (Gwion), thought to be the world's oldest indigenous art, dating back over 20,000 years. Enjoy time to discover one of the bay's many uninhabited islands and enjoy a cooling dip in the freshwater pools.



Austravel Secrets...

Extend your stay in Broome to discover the wide expanse of Cable Beach, the perfect spot for a camel ride at sunset.



DAY 8 Montgomery Reef and Horizontal Falls Cruise through the Buccaneer Archipelago, home to over 800 islands, and experience two of the unforgettable highlights of the Kimberley Coast. See Montgomery Reef 'rise' out of the ocean as the tide ebbs, before joining a reef walk and marine life study. In Talbot Bay, the region's 12 metre tides create an amazing spectacle, the unique Horizontal Falls. Board the zodiacs for an exhilarating, up-close view of this natural phenomenon.

DAY 9 King Sound and Crocodile Creek Cruising through King Sound witness the effects of the iron ore mining operations on Koolan and Cockatoo Islands. Visit Crocodile Creek to enjoy exploration and fresh water swimming.

DAY 10 Lacepede Islands Cruising Yampi Sound visit the Lacepede Islands. These islands are situated well off shore and are known for the turtle nestings and booby and frigate bird colonies. This evening say farewell to new-found friends as we enjoy the Captain's Farewell Cocktail Party.

DAY 11 Arrive in Broome Our unforgettable cruise along the Kimberley coast concludes in Broome this morning.