

MARCH 2015 | New Zealand Special Edition

# ENDEAVOUR

THE MAGAZINE FROM AUSTRAVEL, EXPERTS IN AUSTRALIA, NEW ZEALAND & SOUTH PACIFIC

*Five  
wildlife  
experiences  
not to be missed*

*A Day in  
the Life*

Meet Russell Alexander, the unofficial  
'Lord of the Shire', and take a behind  
the scenes tour of Hobbiton

Savour the best of  
*Wine and Luxury*



# Welcome to New Zealand

Whether you're exploring ancient forests, kayaking through towering fiords or wine tasting near white sand beaches, every day is a different journey, with adventure around every corner. Today, hide away on an island paradise or find your own path among endless hiking and cycle trails. Tomorrow, peek through Hobbit holes, unwind in hidden hot springs and let the warm Maori culture embrace you.

**100% PURE NEW ZEALAND**



# Welcome to ENDEAVOUR

## the magazine by Austravel

Our magazine is named after **HMS Endeavour**, the first seagoing vessel to reach the East Coast of Australia in 1770, when Captain Cook went ashore at what is now known as Botany Bay.



### Kia ora and welcome to our New Zealand special edition of Endeavour

This special edition is dedicated to our love of New Zealand, from North to South and everything in between. The nature, the wildlife and of course - the wine. You can read about the wildlife, how to sample world-class wine in the lap of luxury and take a behind the scenes tour of the Hobbiton film set. Plus, read the tales and tips from our colleagues, with highlights from their recent trips.

Sit back, pour yourself a Sauvignon Blanc and let us inspire you. Our Travel Designers are waiting to create your ultimate New Zealand holiday experience, just for you.

Karen Joyce, General Manager



## Contents

### On the cover

**-06-** Five New Zealand wildlife experiences not to be missed

A round up of the best wildlife, above and below the sea



**-08-** A Day in the Life

Learn about Hobbiton Movie Set Tours from their General Manager Russell Alexander

**-16-** Savour the best of Wine and Luxury

Sample New Zealand's world-class wine regions

### Regular features

**-04-** See New Zealand with APT Tours

Embark on a luxury, vista-filled expedition of New Zealand with APT Tours

**-11-** A View with a Room

Stay at the luxury Eagles Nest, overlooking the Bay of Islands

**-12-** North Island Wonders

Explore the North Island at your own pace

**-15-** Travellers' Tales

Travel Designer Becky tells us about her adventure on North Island

**-18-** It's a Deal

Our best New Zealand offers picked by our experts

**-20-** The Beautiful South

Explore the remarkable scenery and unique wildlife of South Island

**-22-** Why I Love

Travel Designer Lauren explains how Queenstown stole her heart

**-23-** Why Choose Austravel?

Our reasons to book with us plus how you can be inspired



Visit Austravel.com for full T&C's. Prices are subject to change & availability. All prices are based on twin share and exclude flights unless otherwise stated. Prices are correct at time of going to print, for selected travel periods and may be withdrawn at any time. Calls are free, charges from mobiles and other provider's may vary. All the flights and flight-inclusive holidays in this magazine are financially protected by the ATOL scheme. When you pay you will be supplied with an ATOL Certificate. Please ask for it and check to ensure that everything you booked (flights, hotels and other services) is listed on it. Please see our booking conditions for further information or for more information about financial protection and the ATOL Certificate go to: [www.atol.org.uk/ATOLCertificate](http://www.atol.org.uk/ATOLCertificate).



**ABTA**  
ABTA No.W0656

# See New Zealand

## with APT Tours




New Zealand is regarded as a nation of pristine natural beauty, and it's worth taking the time to find out exactly why. Escorted tours seem a natural choice when exploring the sheer number of world-class landmarks that fill both the North and South Island. See the breathtaking Bay of Islands and the cultural serenity of Wellington in New Zealand's north as well as the majesty of Fjordland on the South Island.

Everyone has different tastes, which is why APT offers a choice of touring styles to suit.

Perfect for first-time travellers or those seeking a comprehensive discovery, APT Luxury Tours take care of every detail from the moment you step onboard your coach. You'll enjoy superb accommodation, a host of unforgettable culinary experiences, enriching sightseeing and exceptional services. But it's the finer details that tell the real story — added extras such as rooms in key locations and a comprehensive range of included sightseeing covering all the iconic highlights as well as the lesser-known attractions in each region.

Travelmarvel by APT tours offer their trademark exceptional service whilst featuring hand-picked accommodation, quality meals and included sightseeing. Every tour is designed to provide the perfect balance of sights and leisure time. So while you'll be taken to the must-see attractions and hidden gems, you'll also enjoy the freedom and flexibility to explore more of New Zealand at your own pace.

From the pristine fiord of Milford Sound to the geothermal wonderland that is Rotorua and from rich culture to mouth-watering cuisine, New Zealand is a country that will satisfy the senses of every traveller. And no matter which style of touring you choose, your price covers everything you need for the perfect holiday. 



*Austravel  
Secret...*

“An escorted tour is a great way to make sure you don't miss out on anything whilst in New Zealand. With an APT tour, the itineraries allow for free time and venturing out for meals on your own if you want to.”

*Steph, Travel Designer*





**ABOVE:** The spectacular architecture of the Dunedin railway station.  
**MAIN PHOTO:** Stunning views at Mt Cook National Park.



**BELOW:** One of the world's greatest rail adventures, the TranzAlpine



## New Zealand Getaway

This 15-day Travelmarvel tour goes from Auckland to Christchurch, taking in all the wonders in-between, such as Rotorua's steaming geysers, the dramatic cliffs of Fiordland, glaciers in Franz Josef and the spectacular Mt Cook. Not to mention the adventure capital Queenstown.

### Tour highlights:

Bay of Islands • Waitomo • Cook Strait cruise • Fox Glacier • Dunedin • Lake Tekapo

Prices from £2,399 per person

Saving up to £200 per couple

Based on travel Oct - Dec 2015. Excludes flights



## New Zealand Splendour

With a 23-day APT tour from Christchurch to Auckland you'll see a vast majority of what both islands have to offer. From the caves of Te Anau on the South Island to Auckland in the north, there will be glorious scenery and photo opportunities every day.

### Tour highlights:

Mt Cook • Milford Sound • TranzAlpine train journey • Rotorua • Bay of Islands

Prices from £5,599 per person

Saving up to £200 per couple

Based on travel Oct - Dec 2015. Excludes flights.



## The Southern Tourer

Take in the very best of the South Island with a 9 day APT tour from Christchurch. On your journey around the island you'll see mountains, fiords and calm waters, which show off the majesty of New Zealand.

### Tour highlights:

Southern Alps • Queenstown • Te Anau • Mt Cook National Park

Prices from £2,089 per person

Saving up to £100 per couple

Based on travel Oct - Dec 2015. Excludes flights.



# Five *New Zealand* wildlife experiences *not to be missed*



The wildlife in New Zealand is truly unique, and with its position in the South Pacific it was one of the last lands to be populated by humans.

That coupled with a historical lack of natural predators meant its wildlife evolved in a way which astounded botanists when they first explored the islands. Furthermore, beneath and beside the sea there are more wonders to behold, as almost half the world's whales, dolphins and porpoises use the rich, nutritional waters around the islands as feeding grounds, while huge numbers of fur seals make their homes on the beaches.

If you love wildlife then you're in for a real treat in New Zealand. Here are our top five animals and the best experiences to spot them, guaranteed to thrill and get your camera finger twitching.



*Austravel  
Secret...*

“ Our Whale Watching Cruise in Kaikoura is a great photo opportunity and a must do for nature and wildlife lovers, as you also see many bird species, seals and dolphins! ”  
*Julie, Travel Designer*



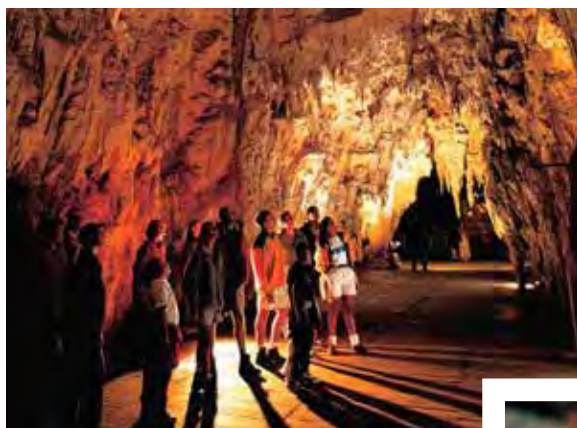
## Whale Watching – Kaikoura

The Kaikoura protected marine area on the east coast of the South Island is the perfect vantage point to see the biggest, most impressive animals in the ocean. Regular visitors include sperm whales, fattening up on squid during dives to depths of up to three kilometres before migrating to their warm mating grounds to the north. Seasonal visitors also include the mighty Humpbacks and Orca. Take a boat, helicopter or plane from the Whaleway station in Kaikoura or make a day of it with a trip from Christchurch.



## Swim with dolphins – Akaroa

Hugely intelligent, playful and friendly, dolphins captivate and fascinate us. But it's only when you interact with them in their natural habitat that you really begin to understand how amazing these creatures are. They're able to use their sonar to locate and even stun fish or squid with high-pitched sonic bursts, or work as a team to round up shoals. Hector's dolphin is the smallest and one of the rarest species and only found off the coast of the South Island. They have no discernible beak and stripes across their bodies. The best place to spot and even swim with one is during a boat trip from Akaroa – just 75km from Christchurch.

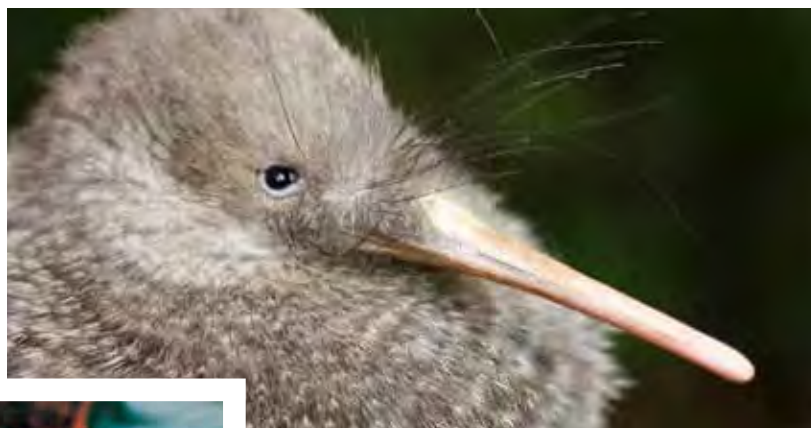


## Glow worms – Waitomo

The limestone caves of Waitomo, created by freshwater creeks and brooks, are home to a variety of wildlife and the underground lakes contain some unique flora and fauna. Most striking of these are the bioluminescent glow worms which hang down from the ceilings of the caves. The worm part of the name is factually incorrect, as they are the larvae of a gnat, but the green-blue light they produce will take your breath away as you glide across one of the underground lakes by boat or canoe.

## Penguins – Dunedin

More penguin species are found in New Zealand than any other country, so there's a massive chance to see some of these charming birds during your trip. Rarest of all species is the Yellow Eyed Penguin; their population worldwide is only found in a few places on the South Island. For the best chance of seeing this endangered bird (and many other species) take a tour around Taiaroa Head, near Dunedin, to the award winning Yellow Eyed Penguin Reserve.



## Kiwi – Zealandia Sanctuary

Small, flightless, hairy and with their nostrils at the end of their long beaks, kiwis are the most iconic of all New Zealand's wildlife – so much so that they're the national symbol of the country, patriots even taking on the name to describe themselves. The five recognised species of Kiwi are all found exclusively in New Zealand where they use their long beaks to sniff out food on the forest floor during the night. Not being able to fly, walking slowly and possessing poor eyesight means the Kiwi is vulnerable to predators that have been introduced to the islands, such as cats and rats, so the best places to see them are in zoos and wildlife sanctuaries such as the Karori Wildlife Centre, Zealandia – just outside Wellington. 🦜

**CLOCKWISE FROM TOP LEFT:** Swimming with dolphins. Whale Watching in Kaikoura. Dolphins in Akaroa. Kiwi. Yellow Eyed Penguin. Waitomo Caves.



# A Day in the Life

Hobbiton, a village in The Shire, might have come from the mind of JRR Tolkien, but it has become a real place to visit and fans can tour the movie set from *The Lord of the Rings* and *The Hobbit* trilogies on what was once just a farm in Matamata, New Zealand. Here, General Manager and unofficial 'Lord of the Shire' Russell Alexander tells us about his journey, the tours and his plans for the future.



## FACT FILE

**Name:** Russell Alexander

**Job:** General Manager

**Location:** Matamata, North Island







### Austravel Secret...

“I loved this tour, it was one of my favourite things I did in New Zealand. It's a must do even if you are not a fan of the films, it is a stunning location and absolutely fascinating how it was all created!”

**Laura**, Destination Specialist



“We first signed up to The Lord of the Rings trilogy in 1999 and the temporary set was constructed in eight months by the set builders. The original set built from temporary materials — such as ply and styrofoam — was largely deconstructed at the end of The Lord of the Rings filming, but it was rebuilt in 2011 for The Hobbit trilogy. This time it was with permanent materials, complete with Hobbit holes, gardens, a bridge and mill, and we now operate Hobbiton in partnership with director Sir Peter Jackson” explains Russell.

“And every day of the year it's on show to swathes of visitors - more than 800,000 people over the past 13 years have arrived through the farm gates.

The biggest change in my life is that I got married and now have three kids! But from a Hobbiton perspective it means I've had new challenges and more responsibility. This new career has opened up my world to a lot of fresh experiences, which is what life is all about.

Once I arrive at work my job is mainly to manage and oversee whatever project or operation is going on at that time, such as overseeing productions and facilitating photo shoots, I am just a small part of a fantastic team of people.

When tourists arrive they don't quite know what to expect. They have no idea how big it is or the detail

that goes in — it actually blows them away how much is involved in making a major movie, so it's exciting for them to learn about it.

We've grown hugely. When Hobbiton started we had one dedicated staff member and within a year that increased to ten. We now have over 50 permanent members of staff, which increases to up to 180 in the peak period.

The tours, which begin at The Shire's Rest café at the farm gate, operate every half hour in the summer season, with a truly magical experience on offer once a week: a feast fit for a Hobbit at the Green Dragon dining room. After each tour, guests are invited into the Green Dragon Inn at Hobbiton to enjoy a complimentary apple cider, ginger beer and a variety of beers — all custom-brewed locally. We also cater for special events, large groups and even weddings, and we're always looking to improve.

Our success is that we've developed slowly but surely over time and there's enough room here to keep that going! My philosophy has always been to add something new each year. Hopefully this can continue, but the progress we've made already when I reflect on things is really quite humbling.”

## TAKE ME THERE

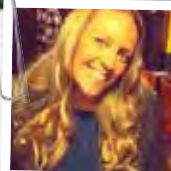
### HOBBITON MOVIE SET & FARMS TOUR

Prices from £41 per person

**MAIN IMAGE:** Hobbiton. **TOP CLOCKWISE:** Russell Alexander: Hobbiton Movie Set General Manager. Take a tour around the film set.



# Take to the Open Road *with* **AVIS**



*Austravel  
Secret...*

“If you're thinking of hiring a car, give yourself a day or two to recover from jetlag and get into the time zone. The last thing you'll want to do after a long haul flight is drive.”

**Victoria**, Travel Designer

Collect your complimentary backpack with each self drive, packed with useful maps and detailed guides.



Find out more about our **Avis** self drive itineraries at **[austravel.com](http://austravel.com)**



# A View with a Room



## EAGLES NEST

*Somewhere between seven stars and heaven*

Perched atop its own private ridgeline with spectacular views of the Bay of Islands, this multi-award winning luxury retreat offers impeccable service, with personal trainers, spa therapists and resident personal chefs. Take a dip in your private, heated horizon edged lap pool and enjoy an intimate dinner in your private villa while drinking in the breathtaking views, with a superb glass of New Zealand wine from the Estate's extensive cellar.

### TAKE ME THERE

**1 NIGHT BED & BREAKFAST**

in the Eagle Spirit Villa.

Prices from **£469** per person

Based on travel Oct 2015



# North Island Wonders



*Austravel  
Secret...*

“The Waitomo Caves were an amazing experience and definitely worth a visit. You really get an up-close view of the glow worms and it's just spectacular!”

**Scott**, Travel Designer

BELOW: Experience Maori culture in Rotorua



New Zealand's North Island is home to vibrant cities, rolling hills, native forests and Maori influences. A holiday here boasts a fascinating tapestry of landscape and culture just waiting to be explored, from the beaches and history of the Bay of Islands, to the mud pools, geysers and Maori heritage of Rotorua.

Auckland is New Zealand's largest city and is considered the gateway to the North Island, with daily Air New Zealand flights from London Heathrow, via Los Angeles. Combine the urban city lifestyle and beach relaxation, hiking trails and enchanting holiday islands, all within half an hour of the city. Take to the waters for a cruise around the harbour, head to the spectacular heights of the Sky Tower for the Skywalk - 192 metres above Auckland - or for those who prefer to stay at ground level, enjoy the Coast to Coast Walkway across Auckland from one coast to the other.

The stunning Bay of Islands is a must-visit for those who love beaches and water activities. With over 140 beautiful islands, from Cape Brett to the Purerua Peninsula, this aquatic playground of adventure activities also boasts an abundance of wildlife including penguins, dolphins and whales.

A binoculars' view across the gulf from Auckland is the Coromandel, a walker's paradise home to native rainforest, volcanic hills and pristine beaches. While in Waitomo you can enter caves filled with iridescent glow worms or, for the more adventurous, try white water rafting and abseiling.


For an insight into New Zealand's fascinating Maori culture, head to Rotorua where you can experience a traditional Hangi dinner and witness the inspirational Haka dance for yourself. This area is also known for its unique landscapes: spouting geysers, bubbling mud pools and steam vents, not to mention Hobbiton - the movie set for The Lord of the Rings and The Hobbit trilogies.

Lake Taupo is brimming with activities, including kayak expeditions, and geothermal hikes. But a picnic on the shores of this breathtaking jewel, formed by a huge volcanic eruption in 186AD, offers a sense of serenity with a picture-perfect backdrop.



Windy Wellington, at the foot of the North Island, was recently named the 'coolest city in the world' by Lonely Planet and with a host of museums, movie experiences and gourmet dining options, it's easy to see why. Relax at Oriental Bay, the golden-sand inner city beach, stumble across a quirky café or hidden bar and visit Te Papa Tongarewa Museum, New Zealand's national museum.

Add the world-class wine regions of Hawke's Bay and Martinborough and you have a recipe for an unforgettable North Island adventure. And what better way to explore than with an Apollo motorhome? See the North Island at your own pace, stop off where you want and start your journey again in your own time.

Apollo has one of the newest fleets in the country and you'll have free unlimited miles and 24-hour roadside assistance, as well as an equipped kitchen to cook meals in the most scenic spots you stumble upon. 



## Iconic Experiences:

These tours can be added to your motorhome adventure.

### Waitomo Caves

Visit the glow worm caves on the west coast and take a boat tour through the starry wonderland created by these unique creatures.

**Prices from £30 per person**

### Hobbiton Movie Set Tour

Take a guided tour of the movie set built for The Lord of the Rings and The Hobbit trilogies. Learn the tips and tricks of Hollywood and explore the Hobbit holes on this two-hour adventure.

**Prices from £41 per person**

### Te Puia

Just five minutes from central Rotorua, on this day tour at Whakarewarewa Thermal Reserve you'll see the bubbling Pohutu Geyser and have the chance to see the native Kiwi in a nocturnal enclosure.

**Prices from £23 per person**



## OUR SUGGESTED MOTORHOME ITINERARY:



Start in vibrant Auckland then head north to the Bay of Islands to explore the bays and coves, and spot the islands' native wildlife. Next up is Waitomo and its glow worm filled caves and adrenalin-pumping activities. Then experience New Zealand's heritage in Rotorua, not missing out on a trip to Hobbiton, before trout fishing and kayaking on Lake Taupo. Sample some of New Zealand's finest wines in Hawke's Bay and admire Napier's Art Deco architecture before heading back to Auckland.

**TOP LEFT:** Auckland's skyline at night. **TOP RIGHT:** Looking over Wharewaka Point, Lake Taupo **MIDDLE LEFT:** Hawke's Bay, Napier. **MIDDLE RIGHT:** Geysers in Rotorua.

## TAKE ME THERE

### 15 DAYS NORTH ISLAND MOTORHOME

**Prices from £168 per person**

Based on selected travel Sep 2015. Excludes flights.



# Grand Pacific Tours

## New Zealand Coach Touring to Suit You

A family owned New Zealand coach holiday specialist, Grand Pacific Tours pride themselves on their comprehensive range of all inclusive tours. With five styles of touring to choose from – Affordable, Luxury, Ultimate Small Group Touring, Cruise & Luxury Coach and Special Interest – you'll find a tour to suit you.

All Grand Pacific tours include luxury coach travel with two-door access, restroom, reclining seats and panoramic windows, along with a professional Coach Captain. With over 190 guaranteed departures offering unbeatable value for money, all that's left for you to do is decide which incredible tour you'll enjoy.

### Here are our top picks:

#### 16 Day Highlights of New Zealand Tour

Best value for money including the beautiful Bay of Islands

**Tour highlights include:**

Christchurch • Omarama • Dunedin • Te Anau  
• Milford Sound • Queenstown • Franz Josef  
• Wellington • Rotorua • Bay of Islands • Auckland

#### 19 Day Rail, Cruise & Coach Tour

Fully escorted featuring four breathtaking rail journeys and scenic overnight Milford Sound Cruise

**Tour highlights include:**

Auckland • Bay of Islands • Rotorua • Wellington  
• Kaikoura • Franz Josef • Queenstown • Milford Sound  
• Te Anau • Dunedin • Christchurch



### TAKE ME THERE

#### 16 DAYS HIGHLIGHTS OF NEW ZEALAND TOUR

with Grand Pacific Tours

Prices from £2,295 per person

Saving up to £250 per couple

Includes selected meals

Based on travel Oct 2015. Excludes flights





# Travellers' Tales...

The North Island is beautiful, adventurous and culturally fascinating. Here, Travel Designer **Becky** tells us about the highlights of her recent trip.



## Where did you start your North Island adventure?

I started my tour in Auckland; it's such a vibrant city full of fantastic shopping, bars and restaurants and yet it is also surrounded by beaches, rainforests and fertile wine regions. It's the perfect starting point to discover the North Island. The Auckland Sky Tower stands proudly over the city and serves two purposes. Firstly, it's great for thrill-seekers who wish to free-fall from the vertiginous platform. Secondly, if you're like me and not too great with heights, the restaurant will also provide incredible views.

## Where did you head to next?

Just across the bay from Auckland is Waiheke Island. This is the place where most Aucklanders dream about living, with its vineyards and chilled-out vibe. When I visited I did the Taste of Waiheke Tour and visited three different vineyards: Mudbricks, Wild on Waiheke and Stonyridge. These labels are some of my favourite tipples in the UK so I was especially pleased to discover their provenance.

## What did you think of Paihia?

I fell in love with this coastal town and would recommend staying for one or two nights. It is the ideal base from which to explore the Bay of Islands

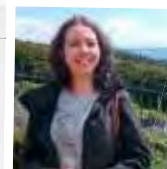
so ensure you go for an excursion such as the Hole in The Rock cruise. We saw lots of dolphins, they swam alongside our boat! On dry land, the Waitangi Treaty Grounds is a site of huge cultural significance and I was absorbed by the fascinating story of how the agreement was signed between the settlers and the Maoris in this very spot.

## What did you do in Rotorua?

In Rotorua the Maori influence and geothermal activities continue to provide unique experiences and my favourite was the interactive Tamaki Tours Hangi and Concert. It's great value for money and the traditional Maori Hangi Feast was exceptionally tasty. The Rotorua skyline and luge was also highly enjoyable, whizzing down the hillside in those nippy little karts. There's a restaurant at the top that serves great food so be sure you take your appetite.

## Did you have any time to relax?

Yes! We all need to relax at some stage of our adventure and the perfect place can be found at the Polynesian Spa and Mineral Pools. They have couples and family pools with slides for children too. The waters are believed to be great for your skin, so what more excuse do you need?



*Austravel Secret...*

“The last stop on our Waiheke Island Day Tour took us to Te Whau Vineyard which had a fabulous restaurant with 360 degree views!”  
Becky, Travel Designer



## Where was your favourite place on the North Island?

If I had to say what I liked most about the North Island I would say it was the scenery and activities around Rotorua. There's only one thing that could possibly compare – the prospect of exploring the South Island, which I am told is equally spectacular. 📍

## TAKE ME THERE

**3 NIGHTS 4★ AUCKLAND HOTEL**

**3 NIGHTS 4★ BAY OF ISLANDS HOTEL**

**2 NIGHTS 3★ ROTORUA HOTEL**

**8 DAYS CAR HIRE**

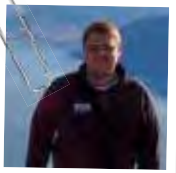
Prices from £529 per person

Based on travel Oct 2015. Excludes flights.

**ABOVE:** Auckland at sunset. Stonyridge vines, Waiheke.



# Savour the best of Wine and Luxury



*Austravel  
Secret...*

“After sampling the wineries of Hawke’s Bay, take a fun trip by tractor and trailer from Cape Kidnappers to the Gannet Colony; splashing in and out of the surf as you cruise down the beach. It’s great fun for all ages!”

**Matt**, Travel Designer

---

Whether you’re a wine enthusiast or just enjoy a tipple now and again, New Zealand’s world-class wine is not to be missed. From Marlborough in the South to Hawke’s Bay in the North, enjoy sampling fine wines in the some of the most picturesque settings, partnered with luxurious stays in these handpicked retreats.

---





## Marlborough

Journey inland to the gourmet province of Marlborough - perfect for year-round sunshine and wine making, and home to New Zealand's largest wine growing region. Take a tour through the iconic vineyards as your guides provide fascinating insights into how these great wines are crafted. Sample the wines, olive oils and gourmet foods that draw visitors to this region, together with fantastic beaches, forests and valleys. Marlborough is known as the 'green-lipped mussel capital of the world', so be sure to enjoy a delicious combo of mussels washed down with some Marlborough Sauvignon Blanc while you're there.

### Where to stay: Bay of Many Coves ★★★★★

This luxury boutique property is a great place to dine, relax in the freshwater pool and generally be pampered in an unspoilt hillside location.

**1 Night from £185 per person**

Based on travel Oct 2015.



## Wanaka

Experience New Zealand in style by visiting an area oozing with breathtaking surroundings and a wide choice of luxury hotels, lodges and villas. Regarded as having the best views of any New Zealand winery, Rippon Vineyard overlooks the spectacular Southern Alps and Lake Wanaka. Soak up the views with a glass of Riesling in hand, or opt for one of the vineyard's reds.

### Where to stay: Minaret Station ★★★★★

Only accessible by helicopter, the luxury tented suites at Minaret Station have a mountain backdrop to take your breath away and are furnished with sheepskin carpets, opulent beds and private decks with hot-tubs.

**1 Night from £549 per person**

Based on travel Oct 2015.



## Hawke's Bay

Proudly heralded as one of New Zealand's premier wine regions, Hawke's Bay also has an abundance of Art Deco architecture and character to explore, as well as the wineries. Savour it all on a unique cycle experience through the vineyards and work up a thirst to be quenched with local wines or beers.

### Where to stay: The Farm at Cape Kidnappers ★★★★★

Nestled on the divine coastline of Hawke's Bay, this luxury lodge combines rustic materials with a boutique, luxurious sense of style.

**1 Night from £489 per person**

Based on travel Oct 2015.



## Waiheke

Possibly Auckland's best kept secret is beautiful Waiheke Island. Just a 35 minute cruise from the centre of Auckland and you can soon be enjoying some premium wine tastings. Enjoy Ridgeview Estate's stunning views across the harbour before sampling the wine at Te Whau Vineyard.

### Where to stay: The Boatshed ★★★★★

For a true island paradise, set ashore at Oneroa Beach and experience chic luxury, relaxation and panoramic ocean views. This boutique hotel is just a short stroll from the cafés and art galleries of Oneroa, and only three minutes from the beach.

**1 Night from £213 per person**

Based on travel Oct 2015.



**MAIN IMAGE:** Rippon Vineyard, Wanaka.



# IT'S A DEAL!

## Top value picks from our experts

OFFERS  
Not To Be  
Missed

OFFERS  
EXCLUSIVE  
to Austravel

To book any of these great value deals or to find out more information, call our expert Travel Designers on:

**0808 252 5894**



1

### FREE ferry crossing with Apollo motorhome hire

Book your Apollo motorhome and receive a free ferry crossing between the North and South Islands.

15 Days North & South Island Motorhome from £149 per person. Includes free ferry crossing. Excludes flights.

Based on travel 15 Sep – 31 Oct 2015. Book by 15 Sep 2015.



2

### 3 nights at Pullman Auckland from £119 per person

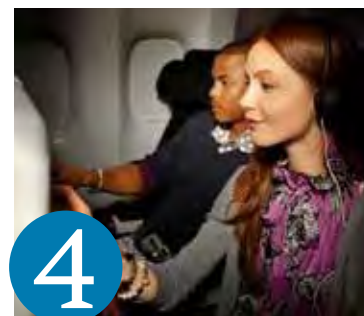
This chic hotel is located just a few minutes' walk from the city centre and you will find some of Auckland's finest bars and restaurants on your doorstep. After a day's sightseeing, treat yourself to a spa treatment at the exclusive in-house sanctuary. Valid on stays Sep 2015.



3

### Fox Glacier Heli Hike from £226 per person

See the stunning Fox Glacier from two perspectives, combining a hike and a heli tour. Your experienced guide will lead you past crevasses and ice ridges, into the middle of the glacier before you take to the sky for incredible views from above.



4

### Fly with Air New Zealand

Whether you choose their comfortable Economy cabin or upgrade to Premium Economy to enjoy more seat recline and one of the best seat pitches in its class, Air New Zealand certainly knows what makes a great long haul flight. Sample fresh New Zealand inspired cuisine and state of the art touch screen inflight entertainment. As well as daily flights from London Heathrow via LA, Air New Zealand offers a range of stopover destinations with their partner airlines.

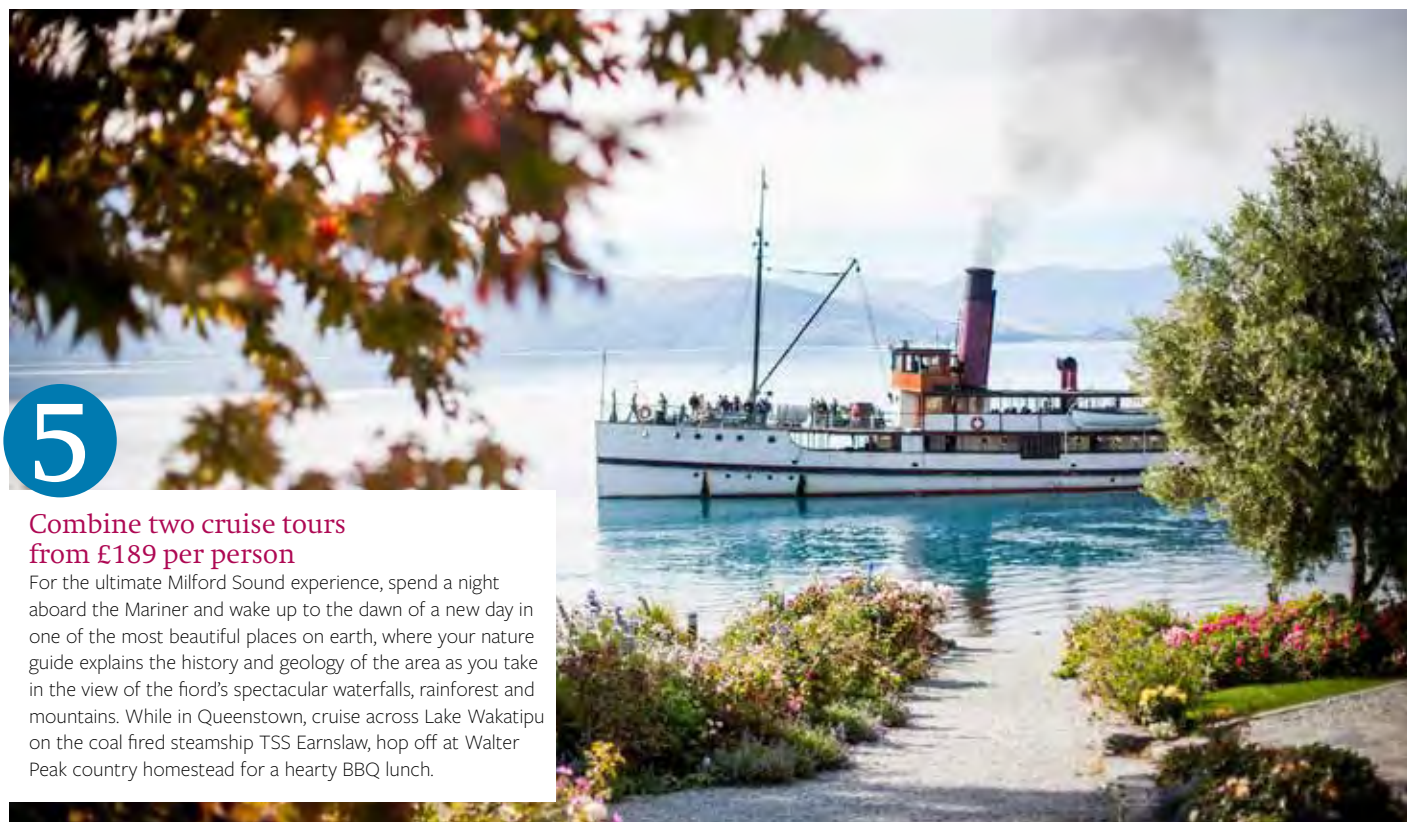
**Economy from £1,095 per person.**

Selected travel May - Jun 2015. Based on London Heathrow to Auckland or Christchurch.

**Premium Economy from £2,499 per person.** Selected travel May - Jun 2015.

Based on London Heathrow to Auckland.



**5**

### Combine two cruise tours from £189 per person

For the ultimate Milford Sound experience, spend a night aboard the Mariner and wake up to the dawn of a new day in one of the most beautiful places on earth, where your nature guide explains the history and geology of the area as you take in the view of the fiord's spectacular waterfalls, rainforest and mountains. While in Queenstown, cruise across Lake Wakatipu on the coal fired steamship TSS Earnslaw, hop off at Walter Peak country homestead for a hearty BBQ lunch.

**6**

### 3 nights at St Moritz Queenstown from £155 per person

This five-star alpine style boutique hotel is a ten minute walk along the lake from the bars, restaurants and cafés of Queenstown and offers commanding views of Lake Wakatipu and the Remarkables mountain range.

Valid on stays Jun 2015.

**7**

### Hole in the Rock Cruise from £53 per person

This day tour can be taken from Paihia in the Bay of Islands. Cruise along the picturesque coastline to Cape Brett to sail through the famous 'Hole in the Rock' natural stone archway. You can even upgrade your tour to swim with dolphins.

**8**

### Add a stopover in the Cook Islands from £341 per person

Not ready to head home? Extend your New Zealand holiday with a 5-night stay at Sunset Resort on Rarotonga. Enjoy an afternoon drink at the pool bar or relax at the beachside deck and watch passing whales and stunning sunsets.





# The Beautiful South



*Austravel  
Secret...*

“ If you visit Milford Sound take your time. The two hour drive from Te Anau takes you through some of the most dramatic scenery I've ever seen! ”

**Katie**, Destination Manager

While the North Island may draw its fair share of plaudits, the remarkable sights of the South Island are spellbinding for visitors. Towering mountains and crystal clear sea inlets create a fantasy experience of epic proportions.

In the Abel Tasman National Park, walk the coastal paths or kayak alongside playful seals, before heading further south to sail between the tall mounts of Milford Sound. When the sun glints off the peaks you will feel like you have been transported into the pages of a fairytale book.

If you like rambling as much as South Islanders like tramping (one and the same thing) this area called Fiordland will invigorate your every step. There are many paths to explore for all levels of walkers and a picnic here might just be the best meal you will ever experience.

A two-hour drive will then bring you to Queenstown; the perfect example of South Island idyll. This lakeside township is one of the most breathtaking municipalities to be found anywhere in the world. Just gaze out at the alpine landscape and you'll want to hire a canoe, bike, campervan or 4x4 to explore more of the area.

Further north, Christchurch wears its colonial heart on its sleeve. You could easily be forgiven for thinking you never left the airport back home, if it weren't for the presence of whales off the coast, thermal springs and the stunning Southern Alps further inland.

This is your chance to experience one of the great train journeys of the world, aboard the TranzAlpine from Christchurch through to the picturesque village of Arthurs Pass. You can then climb on board a jet boat for a 15 kilometre cruise along Waimakariri River to Woodstock Sheep Station for afternoon tea; only in New Zealand!

Watching whales break surface in Kaikoura is for some the experience of a lifetime. But for a chance to add some interactive value to a jaunty cruise, try a fishing charter and eat what you catch. Fresh crayfish doesn't come any better than this.



## Iconic Experiences:

These South Island must-dos can be added to your self drive itinerary.

### Shotover Jet, Queenstown

Take a thrilling ride between the beautiful canyon walls on the River Shotover by speedboat. Quite simply this is one of the most famous and hair-raising adventure excursions in the world.

**Prices from £71 per person**

### Milford Sound Nature Cruise

Hop aboard a cruise at Milford Sound to travel between stunning mountain peaks and spectacular waterfalls. Spot penguins and dolphins as you travel through this unique area of Fiordland.

**Prices from £49 per person**

### Nomads Safari of the Scenes

Fans of Tolkien will be delighted to explore the countryside where scenes for The Lord of the Rings fantasy movie were filmed. A 4WD will gently bounce you through this landscape of outstanding natural beauty.

**Prices from £79 per person**



## OUR SUGGESTED SELF DRIVE ITINERARY:

Start at Christchurch and drive north to Kaikoura to whale-watch. Then onto Mount Cook National Park to climb glaciers. From this vantage point turn south to the lakes and mountains of Wanaka before heading into lively Queenstown to have fun in the numerous bars and quality dining restaurants. A two-hour drive will bring you to Fiordland and Milford Sound. After absorbing the stunning scenery head across the South Island to discover the Otago Peninsula and the unique wildlife in Dunedin before turning back to Christchurch to finish your tour.

Situated in the Otago region of the South Island, Dunedin (pronounced: Dun-eden) is famed for the incredible wildlife that is particularly fond of this section of the peninsula. It's also the place where hardy settlers from Scotland landed, giving the town a unique Caledonian aspect.

New Zealand must be one of the finest places to drive anywhere in the world. Hiring a car to explore the country is well worth considering, giving you the freedom to come and go at your own pace, stopping only to close your mouth after too much jaw-dropping. **A**



**CLOCKWISE FROM TOP LEFT:** Lake Wakatipu, Queenstown. Shotover Jet, Queenstown. Hagley Park, Christchurch. Peninsula Seal Colony, Kaikoura. Nomads Safari of the Scenes.

## TAKE ME THERE

**15 DAYS SOUTH ISLAND MOTORHOME**

**Prices from £168 per person**

Based on selected travel Jun 2015. Excludes flights.



# WHY I LOVE...

Travel Designer Lauren explains how Queenstown stole her heart and left her dreaming of a return trip.



*Austravel  
Secret...*

“When hunger strikes,  
I think everyone should  
have a Fergburger!”

**Lauren**, Travel Designer

“Situated next to Lake Wakatipu and snow-capped mountains invitingly called ‘The Remarkables’, it’s no wonder Queenstown bears the tag ‘Adventure Capital of the World’. The scenery just begs you to explore the outdoors. I’ve never visited such a beautiful place – it’s captivating, almost prehistoric.

According to Maori legend, Lake Wakatipu was formed from the ashes of a wicked giant. The shape of the lake is said to be the outline of the giant lying down. You can get a pretty clear understanding of this tale when you take a ride on the Skyline Gondola. You’ll have the whole vista laid before your eyes while you enjoy a relaxing cable car ride. But it’s not all about the views because the food in the Skyline restaurant at the top was pretty excellent too.

Back in the town, when hunger strikes everyone should have a Fergburger. What started as a simple hole in the wall burger joint has grown into something of an institution. It’s situated in Shotover Street in Central Queenstown, and my favourites include the ‘Cockadoodle Oink’ or the ‘Codfather’ burger.

But that’s Queenstown, which is completely reflective

of New Zealand as a whole and where the standard of food is extremely high. There are many cute little cafés, gourmet delis and great bars. For a real treat stroll down to Steamer Wharf on the lake where you’ll find everything from fine dining experiences to casual cafés.

When you visit Queenstown a certain amount of your itinerary would be wisely spent walking through this beautiful landscape. There are also plenty of opportunities for thrill-seekers to get out on the water. Take a speedboat safari through narrow canyons on the clear waters of the River Dart. From time to time the tour guide will pause (to let you catch your breath) and tell you about the history of the mountain peaks rising up before you. No trip to Queenstown would be complete without experiencing the Shotover Jet – this time on the Shotover River at the other end of the lake. This is a world-famous speedboat ride and it’s an absolute must for those with an adventurous streak.

I think Queenstown is my favourite destination in New Zealand. I was captivated by the scenery, the lake and the mountains.”



## TAKE ME THERE

**4 NIGHTS 4★ QUEENSTOWN HOTEL**

Skyline Gondola & Luge  
Shotover Jet Boat Ride

**Prices from £245 per person**

Based on travel Oct 2015. Excludes flights.

**TOP:** Queenstown in Summer.

**BOTTOM RIGHT:** Take time to relax in Mt Nicholas.



# What next?

Start planning your own adventure down under!

## LATEST NEWS & OFFERS

Be the first to hear about our latest great offers or amazing sales, be inspired about new places to visit and receive expert tips on how to make you adventure extra special.

## ORDER OUR BROCHURE

Head to our website to order a copy of our latest brochure, or for more inspiration simply browse our website which is full of recommended itineraries, destinations, hotel details and more.

## FREE ENDEAVOUR APP

Our Endeavour app brings you even more articles, the latest news on Australia, New Zealand and South Pacific as well as videos of these wonderful locations. Just search for Endeavour...enjoy!

## JOIN THE CONVERSATION

Find us on Facebook, Twitter and Instagram for more holiday inspiration, expert tips and to speak to like minded people.



# Why choose Austravel?

Austravel are the leading specialist for holidays to Australia, New Zealand and South Pacific, and have been advising customers on these incredible destinations since 1977. Our dedicated team of Travel Designers have all travelled and experienced these amazing destinations first hand, enabling them to offer you the expert advice you need. Here are just some of the reasons people choose to book with Austravel:

### EXPERTISE:

Being Australia, New Zealand and South Pacific specialists you can rest assured that our teams will use their intimate knowledge of these wonderful countries to best suit your preferences and budget. Offering an unbiased, informed opinion our Travel Designers are passionate about travel.

### BEST PRICES:

We have worked hard to build special relationships with all of our partners and we continue to work hard in a commitment to providing you with the very best prices; our continued success means we have a significant buying power allowing us to be totally confident in offering you complete value for money.

### FINANCIAL SECURITY:

Book with complete confidence in us and rest assured that you're safe in our hands. We are ABTA, ATOL and IATA bonded, and because we can book all of your travel arrangements in one place, you have the financial security of knowing you will not be left stranded should anything not go to plan.

### ONE-STOP SHOP:

We'll take care of everything from great value flights, hotels, car and motorhome hire to escorted touring, day tours, worldwide stopovers, Australian visas and travel insurance. We can even book your airport hotels and parking before you go!



To book call **0808 252 5894** or for more information visit [austravel.com](http://austravel.com)





# More Premium *than* Economy

Discover New Zealand the moment you step on-board Air New Zealand's daily flight from London to New Zealand, via Los Angeles.

Featuring the Premium Economy Spaceseat™\*, the seat has been designed to give you space and privacy. With around 1800 hours of inflight entertainment and premium food served with complementary New Zealand wines, sit back and enjoy your flight to New Zealand.

If you've ever flown Air New Zealand you'll know their secret. It's their crew which truly sets them apart – helpful and professional, without losing that down to earth Kiwi touch.

\*Available London to Los Angeles and onwards to Auckland