



# GRAND PACIFIC TOURS

2019-2020





# Contents

Kia ora. Welcome to New Zealand	3
Q&A	4 - 5

## Ultimate **Small Group** Touring

Business Class on wheels	
Maximum 20 travellers	6 - 7

### ULTIMATE TOUR OPTIONZ

<b>19 Day</b> Ultimate Rail, Cruise & Coach Experience	8 - 9
<b>19 Day</b> Ultimate Discovery	10 - 11
<b>16 Day</b> Ultimate Explorer	12 - 13
<b>10 Day</b> Ultimate South Island Escape	14 - 15
<b>9 Day</b> Ultimate North Island Escape	16
<b>11 Day</b> Ultimate SOLO Travellers Tour	17



## Fully **Escorted** Touring

Modern 48 seat coach  
Professional Coach Captain & Tour Guide

### SIGNATURE COACH TOURS

Experience the difference. Unique attractions	18 - 19
<b>19 Day</b> New Zealand Rail, Cruise & Coach Holiday	20 - 21
<b>19 Day</b> New Zealand Showcase	22 - 23
<b>10 Day</b> South Island Spectacular	24
<b>9 Day</b> Northern Spectacular	25

### AFFORDABLE COACH TOURS

Unbeatable value. No hidden extras	26 - 27
<b>16 Day</b> Highlights of New Zealand Tour	28 - 29
<b>14 Day</b> New Zealand Panorama Tour	30 - 31
<b>9 Day</b> Taste of the South Island	32
<b>8 Day</b> Taste of the North Island	33



### CRUISE & COACH TOURS

Discover New Zealand by sea and land	34 - 35
<b>23 Day</b> Best of New Zealand by Cruise & Coach	36 - 37

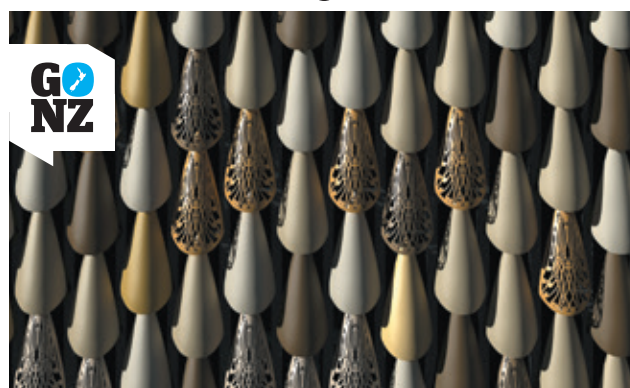
### SPECIAL INTEREST TOURS

Let your interests take you on a journey	38 - 41
--	---------



## General Information

Documentation and Merchandise	42
Booking Terms and Conditions	43 - 45



## Kia ora. Welcome to New Zealand

Austravel is proud to partner with Grand Pacific Tours to bring you a selection of New Zealand Coach Holidays that offer unbeatable value for money.

### ABOUT GRAND PACIFIC TOURS

Grand Pacific Tours provide a comprehensive range of all inclusive, value for money holidays offering a highly professional and personalised service to thousands of travellers every year.

Taking a coach holiday is the best way to make your holiday an unforgettable experience. From the time you arrive in New Zealand a friendly smile awaits. Our professional crew will provide a high standard of service and have been specially trained to perform Grand Pacific Tour's itineraries, meaning you can relax in the knowledge that everything is taken care of.

As the market leader for New Zealand Coach Holidays, we have something for everyone! If you like to travel in style and prefer small group travel Ultimate Small Group Touring series (maximum 20 travellers) offers a variety of options. On the Fully Escorted Touring series (modern 48 seat coach) there are itineraries to suit all budgets and interests. Choose from Signature; Affordable; Cruise & Coach and Special Interest Tours, with over 200 GUARANTEED departures per year.

Grand Pacific Tours best testimony is the terrific feedback we receive from our past travellers who in turn tell their friends how well we looked after them. We take care of it all leaving you to get on with creating incredible holiday moments.



## > WHY NEW ZEALAND?

# Q&A

### WORLD-RENOUNDED NATURAL BEAUTY

Untouched, green and peaceful - it is the ultimate escape. Imagine a mix of spectacular scenery and landscapes from mountain ranges and glaciers, picturesque fiords to crystal clear lakes and miles of coastline.



### UNIQUE CULTURE AND HISTORY

A young country, but one with a rich heritage including a vibrant arts scene and fascinating Maori Culture - an integral part of Kiwi life.

### FRIENDLY LOCALS

Kiwis are friendly and down-to-earth people - it will be one of the things you treasure most about your visit.



### IT'S SAFE

Regularly voted one of the safest countries in the world.

### SOMETHING FOR EVERYONE

A small country packed full of jaw dropping diversity and unique visitor activities and experiences.



### FANTASTIC FOOD AND WINE

Foodies won't be disappointed. An abundance of different food and wine will be enjoyed such as a Maori hangi feast cooked in the earth ovens!

## > WHY COACH TOURING?

### SIT BACK & RELAX

Relax in armchair comfort, knowing the hassle of overlooking hidden locations or taking a wrong turn is removed.

### COMFORTABLE, MODERN COACHES

Featuring panoramic windows, reclining seats, air conditioning, two door access + more. Take in the breathtaking views from every seat on a daily seat rotation.

### EXPERIENCED CREW

The professional and friendly crew will provide fun and informative commentary, showcasing facts and figures, myths and the passion they hold for New Zealand.

### ICONIC INCLUSIONS VALUE FOR MONEY

Coach Tours ensure you visit all the must see locations and iconic attractions plus unique hidden gems, neatly packaged up at an unbeatable price.

### MAKE NEW FRIENDS

Share your holiday experiences with like-minded people and make a network of wonderful new friends.



**We treat  
your holiday  
like it's  
our own,  
because  
we're happy  
when you're  
happy!**

## > WHY GPT?

### 100% NEW ZEALAND

We specialise in one destination with a huge choice of tours to suit all budgets and interests.

### 200+ GUARANTEED DEPARTURES

Don't have your plans turned upside down, every tour is guaranteed to travel!



### NO HIDDEN EXTRAS

Pay one price inclusive of airfares & taxes, a personalised meet and greet on arrival into New Zealand with return airport transfers, portage, coach travel, hotel accommodation, most meals including specialty dining, all sightseeing and attractions!

### EXCLUSIVE BENEFITS

Enjoy unique Grand Pacific Tours arrangements such as reserved Top Deck on the Milford Sound Cruise and one guide per 24 travellers for any guided tour inclusion.

### TRAVEL IN STYLE

All tours include a stylish array of travel goods plus available for purchase are a range of quality merchandise items.

See page 42.

### RESERVED DINING

All our groups are provided with priority reserved dining at breakfast and dinner and can enjoy 'wine time' offering discounted pre-dinner drinks at the hotels.

### NO TRAVEL PARTNER? NO WORRIES!

We have dedicated tours for those who travel solo which includes a GUARANTEED single room.

### BONUS & SEASONAL OFFERS

We offer a number of specials on our tours, including huge savings when travelling over New Zealand's Spring or Autumn seasons. Make sure to check our website for the latest deals [gptnz.com/bonus-offers](http://gptnz.com/bonus-offers)

## CONNECT WITH US

*PLUS stay informed via our eNews, exclusive offers and competitions.*



[austravel.com](http://austravel.com)



[facebook.com/AustravelUK](https://facebook.com/AustravelUK)



[instagram.com/austraveluk](https://instagram.com/austraveluk)



[twitter.com/Austravel](https://twitter.com/Austravel)





SMALL GROUP TOURING

# ULTIMATE



*"The 'Business Class' Ultimate Coach is definitely the way to go. Beautifully appointed, comfortable and luxurious. Won't be able to travel any other way again."*

D. & A. J. - Past Travellers

*Embrace*



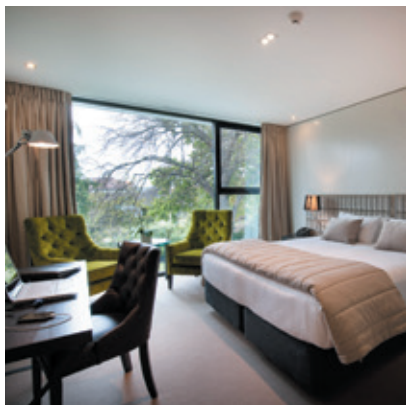


## Business class on wheels Maximum 20 travellers

The beauty of travelling aboard the Ultimate Coach is that it is in a league of its own and not offered by any other operator. Be treated as a VIP and enjoy a number of exclusive extras.

### SMALL GROUP TRAVEL 4.5 STAR HOTEL ACCOMMODATION UNPARALLELED COMFORT

Be dazzled by the purpose-built Ultimate Coach featuring 20 luxury leather seats, panoramic viewing and a level of comfort unparalleled by any other vehicle. The design is state-of-the-art and complete with extensive onboard features including the latest finishes and technology.



The hotels chosen to be part of the Ultimate Small Group Tours experience are a collection of stylish 4.5 star rated hotels. You will be treated to a very high standard, each of the hotels used offer a premium level of comfort, extensive guest facilities and excellent location. In more remote locations, hotel standards may not be as high due to limited choice.

### 5 STAR TREATMENT VIP EXTRAS



Full size coach. ONLY 20 leather fully reclining seats



A deluxe Travel Set including travel bag and ticket wallet



Complimentary pre dinner drink at the welcome dinner



Boxed mints and souvenir water bottle



Complimentary daily on board Wi-Fi allowance



Access to daily newspaper and a range of glossy magazines



Intimate farewell dinner including selected beverages



BONUS  
Group Photo



# 19 Day Ultimate Rail, Cruise & Coach Experience



## GUARANTEED departures

2019	2020
Sep 7, 21	Jan 6, 11, 26
Oct 10, 12	Feb 10, 17
Nov 14, 20	Mar 8, 15, 28
Dec 18	Apr 15
	May 3

**SEASONAL OFFER** Save £162 per person on highlighted departure dates.

**FESTIVE SEASON** departure  
£55 per person surcharge applies.

## ALL INCLUSIVE tour price

Includes Ultimate 20 seat coach travel, 4.5 star hotel accommodation, most meals, sightseeing & attractions.

## TOUR ONLY from

Per person, twin share	£5945
Single supplement	£1919

## Stay a little longer

City	Twin share	Single
Auckland	£95	£189
Christchurch	£124	£249

Extra night rates are per person and based on room only. Subject to availability.



The Haka, a traditional Maori war cry, dance or challenge.

## NO HIDDEN EXTRAS

### PRE PAID ATTRACTIONS

- Kauri Museum\*
- Waitangi Treaty Grounds\*
- Dolphin / Hole in the Rock Cruise
- Glenbrook Vintage Railway
- Rainbow Springs Nature Park\*
- National Kiwi Hatchery Tour\*
- Skyline Rotorua Gondola & Luge Ride
- Agrodome
- Thermal mud pools & geysers\*
- Te Puia traditional Maori Hangi & Concert
- Wellington Tramway Museum
- Te Papa, NZ's National Museum
- Cruise on the Interislander Ferry
- Coastal Pacific Rail Journey
- International Antarctic Centre
- Christchurch Tram
- TranzAlpine Rail Journey
- Lakes District Museum
- Cruise Lake Wakatipu on the TSS Earnslaw
- **HIGHLIGHT** Doubtful Sound Overnight Cruise
- Taieri Gorge Limited Rail Journey
- Larnach Castle\*
- Pleasant Point Rail Experience
- City sights tour of Auckland, Wellington, Christchurch & Dunedin

\*Guided tour.

### ULTIMATE SMALL GROUP TOURING

- Personalised Meet & Greet on arrival
- Return airport transfers in New Zealand
- Ultimate Small Group Tour Coach with 20 luxury leather reclining seats on a full size vehicle, 2 door access and panoramic windows
- Professional Coach Captain
- 17 nights 4.5 star hotel accommodation
- Doubtful Sound Overnight Cruise
- 6 two night stays • Hotel portage
- 5 rail journeys
- 4 cruises
- All sightseeing and pre paid attractions
- Comprehensive documentation pack
- **BONUS** Group photo

### MEALS

- 18 cooked breakfasts including a specialty breakfast: Stratosfare Restaurant, Rotorua
- 14 sumptuous dinners including 3 specialty dinners: Maori Hangi & Concert, Rotorua; Walter Peak Homestead, Queenstown; Farewell Dinner, selected beverages, Christchurch
- 2 lunches
- 2 delicious morning teas including an Ultimate High Tea: Larnach Castle

Note: Dinner on Day 1 not included for anyone arriving later than 8pm.

## ITINERARY

(B) Breakfast. (L) Lunch. (D) Dinner. (SD) Specialty Dinner.

### DAY 1: Arrive Auckland (D)

On arrival into Auckland you will be met by a Grand Pacific Tours representative who will transfer you to your hotel. Meet your travelling companions over a complimentary pre dinner drink.

**Hotel** Crowne Plaza Auckland

### DAY 2: Auckland - Bay of Islands (B,D)

Board the luxurious Ultimate Coach and enjoy a city tour of Auckland, dubbed the 'City of Sails', before travelling to Matakoho to enjoy a visit and informative talk at the Kauri Museum. Travel via Whangarei to Paihia, situated in the beautiful Bay of Islands. Enjoy a guided tour of the Waitangi Treaty Grounds, the location of the signing of the treaty between the Maori tribes and the British.

**Hotel** Scenic Hotel Bay of Islands (Deluxe Room. 2 nights)

### DAY 3: Bay of Islands (Free Day) (B)

Today is a free day. Choose from the many optional activities available, including the Cape Reinga coach trip via Ninety Mile Beach or a spectacular scenic flight. This evening is also free and you may like to enjoy a relaxing dinner cruise (optional).

### DAY 4: Bay of Islands - Auckland (B,D)

This morning travel aboard a luxury catamaran to Cape Brett and the famous Hole in the Rock. Keep an eye out for bottlenose and common dolphins

before returning to Paihia. Travel south, call into the Parry Kauri Park to see a magnificent example of a Kauri Tree before arriving in Auckland.

**Hotel** Crowne Plaza Auckland

### DAY 5: Auckland - Rotorua (B,D)

This morning travel to Glenbrook Vintage Railway for a nostalgic 15 kilometre trip back in time on a beautifully restored vintage steam train. Visit the restoration workshop and on return to Glenbrook Station, morning tea will be served. Travel through magnificent countryside of green pastures famous for dairying. Continue to the Rainbow Springs Nature Park, home to the world's largest kiwi hatchery for a unique behind-the-scenes tour where over 1800 kiwi chicks have been hatched to date.

**Hotel** Regent of Rotorua (2 nights) or similar

### DAY 6: Rotorua (B,SD)

Today begins with a gondola ride at the Skyline Rotorua where a buffet breakfast and spectacular views are on offer. There is also time for a thrilling luge ride! Next stop is Agrodome for an action packed hour of farming entertainment and education that's unlike anything you've seen before. Enjoy some free time this afternoon before travelling to Te Puia to see the boiling mud pools and awesome geysers that Rotorua is famous for. This evening experience an entertaining Maori Hangi and Concert.



### DAY 7: Rotorua - Wellington (B,D)

Travel along the Thermal Explorer Highway to the spectacular Huka Falls and lakeside town of Taupo. Travel via the Tongariro National Park to the Wellington Tramway Museum to view a display of tramway history and enjoy a nostalgic trip on one of the original trams that served Wellington city.

**Hotel** InterContinental Wellington (Deluxe Room. 2 nights)

### DAY 8: Wellington (B)

A highlight this morning will be time to explore Te Papa, New Zealand's National Museum with exhibits that embrace both Maori and European views. Reboard your coach for an extensive city tour which showcases the history and culture on show. Enjoy free time this afternoon and this evening is also at leisure.

### DAY 9: Wellington - Kaikoura - Christchurch (B,D)

This morning board the Interislander Ferry, cross the Cook Strait and enjoy the scenery as you travel through the Marlborough Sounds to Picton. Join the Coastal Pacific, a truly spectacular rail journey that follows a thin wedge of land between the Pacific Ocean and the Kaikoura Ranges. Meet your Ultimate Coach in the fishing village of Kaikoura for the journey to the garden city of Christchurch.

**Hotel** The George (2 nights)

### DAY 10: Christchurch (B)

Today visit the International Antarctic Centre designed to provide an informative account of life in Antarctica. This is followed by an introductory city tour of Christchurch. This afternoon includes a journey on board the Christchurch Tram at your leisure. This evening is also free to enjoy one of the many eateries near your hotel.

### DAY 11: Christchurch - Arthur's Pass - Fox Glacier (B,D)

This morning board the TransAlpine, renowned as one of the great train journeys of the world. Travel over massive viaducts, river valleys and spectacular gorges as you ascend to Arthur's Pass located in the centre of the Southern Alps. Board your Ultimate Coach and travel to Hokitika, famous for its Greenstone before continuing via Franz Josef to the township of Fox Glacier where time is available to experience a scenic flight (optional, weather permitting) over the spectacular glaciers.

**Hotel** Distinction Fox Glacier

### DAY 12: Fox Glacier - Queenstown (B)

See the snow capped peaks of the Southern Alps as you travel south along the West Coast. Continue via the Haast Pass, an area of stunning beauty before arriving into Arrowtown to visit the Lakes District Museum. Continue to picturesque Queenstown, a year round resort situated on the shores of magical Lake Wakatipu. This evening is free and you may choose to dine out at one of the many fine restaurants.

**Hotel** Heritage Queenstown (2 nights) or similar

### DAY 13: Queenstown (Free Day) (B,SD)

Today is a free day for you to explore Queenstown with many options available. This evening board the vintage steamship TSS Earnslaw and cruise across Lake Wakatipu to Walter Peak Station. Sit back, relax and enjoy a gourmet barbecue dinner at the Colonel's Homestead. After dinner enjoy a short farm tour then reboard the TSS Earnslaw for a sing along by the piano on your return cruise.

### DAY 14: Queenstown - Doubtful Sound Overnight Cruise (B,L,D)

Today travel via Te Anau to Manapouri. Enjoy a picnic lunch as you cruise across this glacial lake. A short ride over the Wilmot Pass brings you to the boarding point to join the Fiordland Navigator for an amazing overnight experience. As you cruise through the pristine beauty of Doubtful Sound, naturalist guides will provide commentary and point out the resident wildlife. When evening falls enjoy a delicious carvery buffet prepared freshly by the onboard chef.

**Overnight** Fiordland Navigator

### DAY 15: Doubtful Sound - Te Anau (B,D)

Start the day with a hearty breakfast before heading back to Deep Cove for the trip back to Manapouri. Return to the wharf and meet your Ultimate Coach for the journey to Te Anau where you will enjoy an afternoon at leisure. You may like to visit the Te Anau Glow Worm Caves (optional).

**Hotel** Distinction Te Anau Hotel & Villas

### DAY 16: Te Anau - Dunedin (B,D)

Travel via Gore and Balclutha to Pukerangi to board The Taieri Gorge Limited for a journey through spectacular scenery only accessible by rail. On arrival at Dunedin's historic Edwardian Railway Station your coach will transfer you to the hotel.

**Hotel** Distinction Dunedin (2 nights)

### DAY 17: Dunedin (B,D)

Travel along the Otago Peninsula to Larnach Castle, hear the tragic and scandalous stories on a guided tour with time to wander around this Garden of International Significance followed by an Ultimate High Tea served in the Grand Ballroom. Return to the city for an informative city tour followed by some free time. You might be interested in the chance to see wildlife in their natural habitat (optional).

### DAY 18: Dunedin - Christchurch (B,L,SD)

This morning travel to the city of Oamaru, famous for its limestone. Continue north to Pleasant Point Museum & Railway for a short rail experience followed by lunch and time to explore the preserved heritage of the South Canterbury railway. This evening enjoy a farewell dinner with selected beverages and your new friends.

**Hotel** The George

### DAY 19: Depart Christchurch (B)

Time to say goodbye. You will be transferred to the airport for your flight home after a memorable New Zealand holiday.



### Doubtful Sound Overnight Cruise

Escape to the peace & tranquillity of Doubtful Sound for an overnight cruise on the Fiordland Navigator. Your overnight experience includes:

- Cruise on a traditionally designed vessel
- Cabins with private ensuite
- Superb evening carvery buffet prepared freshly by an onboard chef
- Cooked breakfast
- Tender craft and kayaking activities
- Knowledgeable nature guide
- Relaxation time allowing you to view the fiords spectacular waterfalls, rainforest, mountains and wildlife



See spectacular scenery on the Taieri Gorge Limited Rail Journey.



### FESTIVE SEASON departure

Witness the spectacular scenery of NZ during the Festive Season. On Christmas Day in Wellington enjoy a sumptuous dinner with all the trimmings. Celebrate an unforgettable New Year's Eve on your overnight cruise through the pristine beauty of Doubtful Sound. See in the New Year with new friends creating lifelong memories. NOTE: The Wellington Tramway Museum is not available on this departure.



# 19 Day Ultimate Discovery



## GUARANTEED departures

2019	2020
Sep 11, 26	Jan 28
Nov 1, 16	Feb 8
	Mar 1
	Apr 22

**SEASONAL OFFER** Save £162 per person on highlighted departure dates.

## ALL INCLUSIVE tour price

Includes Ultimate 20 seat coach travel, 4.5 star hotel accommodation, most meals, sightseeing & attractions.

## TOUR ONLY from

Per person, twin share	£5459
Single supplement	£1676

## Stay a little longer

City	Twin share	Single
Auckland	£95	£189
Christchurch	£124	£249

Extra night rates are per person and based on room only. Subject to availability.



The magnificent Fox Glacier is just over 13 kilometres in length.

## NO HIDDEN EXTRAS

### PRE PAID ATTRACTIONS

- Kauri Museum\*
- Waitangi Treaty Grounds\*
- Dolphin / Hole in the Rock Cruise
- Sky Tower
- Hobbiton Movie Set Tour & Lunch
- Skyline Rotorua Gondola & Luge Ride
- Agrodome
- Thermal mud pools & geysers\*
- Te Puia traditional Maori Hanga & Concert
- Hawke's Bay Express Napier
- Te Papa, NZ's National Museum
- Cruise on the Interislander Ferry
- TranzAlpine Rail Journey
- Cruise Lake Wakatipu on the TSS Earnslaw
- Lakes District Museum
- Milford Sound Nature Cruise & Lunch
- Larnach Castle\*
- City sights tour of Auckland, Napier, Wellington, Christchurch & Dunedin

\*Guided tour.

### ULTIMATE SMALL GROUP TOURING

- Personalised Meet & Greet on arrival
- Return airport transfers in New Zealand
- Ultimate Small Group Tour Coach with 20 luxury leather reclining seats on a full size vehicle, 2 door access and panoramic windows
- Professional Coach Captain
- 18 nights 4.5 star hotel accommodation
- 4 two night stays
- Hotel portage
- 4 cruises
- All sightseeing and pre paid attractions
- Comprehensive documentation pack
- **BONUS** Group photo

### MEALS

- 18 cooked breakfasts including a specialty breakfast: Stratosfare Restaurant, Rotorua
- 15 sumptuous dinners including 3 specialty dinners: Maori Hanga & Concert, Rotorua; Walter Peak Homestead, Queenstown; Farewell Dinner, selected beverages, Christchurch
- Marlborough Wines with dinner in Blenheim
- 2 lunches including a Shire's buffet lunch: Hobbiton
- 1 Ultimate High Tea: Larnach Castle

Note: Dinner on Day 1 not included for anyone arriving later than 8pm.

## ITINERARY

### >> ITINERARY

(B) Breakfast. (L) Lunch. (D) Dinner. (SD) Specialty Dinner.

#### DAY 1: Arrive Auckland (D)

On arrival into Auckland you will be met by a Grand Pacific Tours representative who will transfer you to your hotel. Meet your travelling companions over a complimentary pre dinner drink.

**Hotel** Crowne Plaza Auckland

#### DAY 2: Auckland - Bay of Islands (B,D)

Board the luxurious Ultimate Coach, depart Auckland and travel to the Parry Kauri Park to see a magnificent example of a Kauri Tree. Enjoy a visit and informative talk at the Kauri Museum in Matakohē, then travel via Whangarei to Paihia, the location of the signing of the treaty between the Maori tribes and the British.

**Hotel** Scenic Hotel Bay of Islands (Deluxe Room. 2 nights)

#### DAY 3: Bay of Islands (Free Day) (B)

Today is a free day. Choose from the many optional activities available, including the Cape Reinga coach trip via Ninety Mile Beach or a spectacular scenic flight. This evening is also free and you may like to enjoy a relaxing dinner cruise (optional).

#### DAY 4: Bay of Islands - Auckland (B,D)

This morning travel aboard a luxury catamaran to Cape Brett and the famous Hole in the Rock. Keep an eye out for bottlenose and common dolphins before returning to Paihia. Travel south via Whangarei to Auckland.

**Hotel** Crowne Plaza Auckland

#### DAY 5: Auckland - Rotorua (B,L,D)

This morning enjoy a city sights tour including a visit to Sky Tower, one of New Zealand's most spectacular attractions. Continue through the picturesque countryside to Hobbiton for a buffet lunch. This is followed by a guided tour of the Movie Set from The Lord of the Rings and The Hobbit trilogies. Your guide will recount details of how this beautiful piece of farmland was transformed into The Shire from Middle-earth.

**Hotel** Regent of Rotorua (2 nights)

#### DAY 6: Rotorua (B,SD)

Today begins with a gondola ride at the Skyline Rotorua for breakfast and spectacular views and time for a thrilling luge ride! Next stop is Agrodome for an action packed hour of farming entertainment and education that's unlike anything you've seen before. Enjoy some free time this afternoon before travelling to Te Puia to see the boiling mud pools and awesome geysers that Rotorua is famous for. This evening experience an entertaining Maori Hanga and Concert.



### DAY 7: Rotorua - Napier (B,D)

Depart Rotorua and travel along the Thermal Explorer Highway to Huka Falls and Lake Taupo. Continue to Napier known as 'The Art Deco Capital', where a city tour will showcase the most comprehensive collection of art deco buildings in the world. Board the Hawke's Bay Express and hear informative commentary on the city's fascinating history. Enjoy some free time this afternoon to explore the city or you might choose to do a guided walk (optional).

**Hotel** Scenic Hotel Te Pania

### DAY 8: Napier - Wellington (B,D)

Travel south this morning into Wellington for a city tour of the nation's capital which will highlight the history and culture on show here.

**Hotel** InterContinental Wellington (Deluxe Room)

### DAY 9: Wellington - Picton - Blenheim (B,D)

A highlight this morning will be time to explore Te Papa, New Zealand's National Museum with exhibits that embrace both Maori and European views. This afternoon board the Interislander Ferry and enjoy the scenery as you travel through the Marlborough Sounds to Picton where you board your Ultimate Coach for the short journey to Blenheim. This evening at dinner sample some of the local wines from the Marlborough region.

**Hotel** Marlborough Vintners Hotel

### DAY 10: Blenheim - Kaikoura - Christchurch (B)

Tour through Marlborough Country, famous for its food and wine, then travel to the seaside village of Kaikoura. Continue onto the garden city of Christchurch.

**Hotel** The George

### DAY 11: Christchurch - Arthur's Pass - Fox Glacier (B,D)

This morning board the TranzAlpine, renowned as one of the great train journeys of the world. Travel over massive viaducts, river valleys and spectacular gorges as you ascend to Arthur's Pass located in the centre of the Southern Alps. Board your Ultimate coach and travel to Hokitika, famous for its Greenstone before continuing via Franz Josef to the township of Fox Glacier where time is available to experience a scenic flight (optional, weather permitting) over the spectacular glaciers.

**Hotel** Distinction Fox Glacier

### DAY 12: Fox Glacier - Queenstown (B)

See the snow capped peaks of the Southern Alps as you travel south along the West Coast. Continue via the Haast Pass, an area of stunning beauty before arriving into picturesque Queenstown, a year round resort situated on the shores of magical Lake Wakatipu. This evening is free and you may choose to dine out at one of the many fine restaurants.

**Hotel** Heritage Queenstown (2 nights)



CLOCKWISE FROM ABOVE: Explore Te Papa, New Zealand's National Museum; discover all the magic of the Hobbiton Movie Set Tour; join the Hawke's Bay Express for a stylishly memorable experience of New Zealand's Art Deco capital.



### DAY 13: Queenstown (Free Day) (B,SD)

Today is a free day and there are plenty of sightseeing options available. You may wish to enjoy the thrill of a jet boat ride, a heritage tour of the scenic Skippers Canyon or get up close to a Kiwi bird. This evening board the vintage steamship TSS Earnslaw and cruise across Lake Wakatipu to Walter Peak Station. Sit back, relax and enjoy a gourmet barbecue dinner which the chef will prepare in front of you at the Colonel's Homestead. After dinner enjoy a short farm tour then reboard the TSS Earnslaw for a sing along by the piano as you cruise back to Queenstown.

### DAY 14: Queenstown - Te Anau (B,D)

Enjoy a leisurely start this morning before travelling to Arrowtown, an old gold mining village where you visit the Lakes District Museum. Continue to Te Anau, the gateway to Fiordland. Today you may like to visit the Te Anau Glow Worm Caves (optional).

**Hotel** Distinction Te Anau Hotel & Villas (2 nights)

### DAY 15: Te Anau - Milford Sound - Te Anau (B,L,D)

Depart Te Anau for a fascinating drive to Milford Sound where you board your launch for a nature cruise on this magnificent fiord. See the spectacular Bowen Falls and towering Mitre Peak as you enjoy a picnic lunch onboard. This afternoon return to Te Anau where some free time is available. You might like to cap off your Fiordland experience by watching the breathtaking film, Ata Whenua - Shadowland, which screens at the Fiordland Cinema (optional).

### DAY 16: Te Anau - Dunedin (B,D)

Travel via Gore and Balclutha to Dunedin known as the "Edinburgh of the South". Enjoy an informative city tour followed by some free time at leisure.

**Hotel** Distinction Dunedin

### DAY 17: Dunedin - Mt Cook (B,D)

Travel along the Otago Peninsula to Larnach Castle, hear the tragic and scandalous stories on a guided tour with time to wander around this Garden of International Significance followed by an Ultimate High Tea served in the Grand Ballroom. Farewell Dunedin and travel to Oamaru famous for its limestone. Follow the Waitaki River and see Lake Benmore as you travel to Mt Cook.

**Hotel** The Hermitage Hotel (Aoraki Wing)

### DAY 18: Mt Cook - Christchurch (B,SD)

This morning marvel at Mt Cook, New Zealand's highest peak. The opportunity is available to enjoy a scenic flight (optional, weather permitting) over the Southern Alps. Continue to Lake Tekapo and view the brilliant turquoise water, visit the Church of the Good Shepherd and see the Sheep Dog Statue before arriving into Christchurch. This evening enjoy a farewell dinner including selected beverages with your new found friends.

**Hotel** The George

### DAY 19: Depart Christchurch (B)

Time to say goodbye. You will be transferred to the airport for your flight home after a memorable New Zealand holiday.



# 16 Day Ultimate Explorer



## GUARANTEED departures

2019	2020
Sep 27	Jan 11, 26
Oct 13, 28	Feb 13
Nov 12	Mar 1, 10, 29
Dec 5	May 6

**SEASONAL OFFER** Save £162 per person on highlighted departure dates.

## ALL INCLUSIVE tour price

Includes Ultimate 20 seat coach travel, 4.5 star hotel accommodation, most meals, sightseeing & attractions.

## TOUR ONLY from

Per person, twin share	£4767
Single supplement	£1465

## Stay a little longer

City	Twin share	Single
Christchurch	£124	£249
Auckland	£95	£189

Extra night rates are per person and based on room only. Subject to availability.

## NO HIDDEN EXTRAS

### PRE PAID ATTRACTIONS

- Larnach Castle\*
- Milford Sound Nature Cruise & Lunch
- Cruise Lake Wakatipu on the TSS Earnslaw
- Lakes District Museum
- TranzAlpine Rail Journey
- Cruise on the Interislander Ferry
- Te Papa, NZ's National Museum
- Skyline Rotorua Gondola & Luge Ride
- Agrodome
- Rainbow Springs Nature Park\*
- National Kiwi Hatchery Tour\*
- Thermal mud pools & geysers\*
- Te Puia Traditional Maori Hangi & Concert
- Waitangi Treaty Grounds\*
- Dolphin / Hole in the Rock Cruise
- Kauri Museum\*
- City sights tour of Christchurch, Dunedin, Wellington & Auckland

\*Guided tour.

### ULTIMATE SMALL GROUP TOURING

- Personalised Meet & Greet on arrival
- Return airport transfers in New Zealand
- Ultimate Small Group Tour Coach with 20 luxury leather reclining seats on a full size vehicle, 2 door access and panoramic windows
- Professional Coach Captain
- 15 nights 4.5 star hotel accommodation
- 4 two night stays
- Hotel portage
- 4 cruises
- All sightseeing and pre paid attractions
- Comprehensive documentation pack
- **BONUS** Group photo

### MEALS

- 15 cooked breakfasts including a specialty breakfast: Stratosfare Restaurant, Rotorua
- 12 sumptuous dinners including 3 specialty dinners: Walter Peak Homestead, Queenstown; Maori Hangi & Concert, Rotorua; Farewell Dinner, selected beverages, Auckland
- 1 picnic lunch: Milford Sound Cruise
- 1 Ultimate High Tea: Larnach Castle

Note: Dinner on Day 1 not included for anyone arriving later than 8pm.

## ITINERARY

(B) Breakfast. (L) Lunch. (D) Dinner. (SD) Specialty Dinner.

### DAY 1: Arrive Christchurch (D)

On arrival into Christchurch you will be met by a Grand Pacific Tours representative who will transfer you to your hotel. Meet your travelling companions over a complimentary pre dinner drink.

**Hotel** The George

### DAY 2: Christchurch - Mt Cook (B,D)

After an introductory city sights tour depart Christchurch and travel through the southern Canterbury Plains to Lake Tekapo. See the brilliant turquoise water, visit The Church of the Good Shepherd and view the Sheep Dog Statue. Marvel at the spectacular mountain ranges including Mt Cook, New Zealand's highest peak. The opportunity is available to enjoy a scenic flight (optional, weather permitting) over the Southern Alps.

**Hotel** The Hermitage Hotel (Aoraki Wing)

### DAY 3: Mt Cook - Dunedin (B,D)

Depart Mt Cook and see Lake Benmore, before following the Waitaki River to Oamaru, famous for its limestone. Continue south to Dunedin and enjoy an informative city tour followed by some free time to explore at leisure. You might be interested in a tour of the Speight's Brewery (optional) or the chance to see local wildlife in their natural habitat (optional).

**Hotel** Distinction Dunedin

### DAY 4: Dunedin - Te Anau (B,D)

Travel along the Otago Peninsula to Larnach Castle where you will hear of the tragic and scandalous history on a guided tour. Enjoy time to wander around this Garden of International Significance followed by an Ultimate High Tea in the Grand Ballroom. Farewell Dunedin and travel through Balclutha and Gore to Te Anau, gateway to the Fiordland and your overnight stay. Today you may like to visit the Te Anau Glow Worm Caves (optional).

**Hotel** Distinction Te Anau Hotel and Villas

### DAY 5: Te Anau - Milford Sound - Queenstown (B,L)

Depart Te Anau for a fascinating drive to Milford Sound where you board your launch for a nature cruise on this magnificent fiord. See the spectacular Bowen Falls and towering Mitre Peak as you enjoy a picnic lunch. This afternoon travel to Queenstown, overlooking magical Lake Wakatipu. Spend the next two nights at this year round resort which offers a wide range of activities and attractions. This evening is free and you may choose to dine at one of the many fine restaurants.

**Hotel** Millennium Hotel Queenstown (2 nights)



View Aoraki / Mt Cook, NZ's highest peak from the Hermitage Hotel.



CLOCKWISE FROM TOP LEFT: Cruise aboard the vintage steamship TSS Earnslaw to Walter Peak; Agrodome, an educational hands on experience; the patchwork plains of the Canterbury region; Waitangi Treaty Grounds.

#### DAY 6: Queenstown (Free Day) (B,SD)

Today is a free day for you to explore Queenstown at leisure. There are many sightseeing options available including the thrill of a jet boat ride, a heritage tour to Skippers Canyon or get up close to a Kiwi bird. This evening board the vintage steamship TSS Earnslaw and cruise across Lake Wakatipu to Walter Peak Station. Sit back, relax and enjoy a gourmet barbecue dinner which the chef will prepare in front of you at the Colonel's Homestead. After dinner enjoy a short farm tour then reboard the TSS Earnslaw for a sing along by the piano as you cruise back to Queenstown.

#### DAY 7: Queenstown - Fox Glacier (B,D)

Travel to Arrowtown, an old goldmining village and visit the Lakes District Museum. Continue via the Haast Pass to the West Coast, an area of stunning beauty. See the snow capped peaks of the Southern Alps as you travel north to the township of Fox Glacier. Time is available (weather permitting) to experience a scenic flight (optional) over the spectacular glaciers before arriving at your hotel.

**Hotel** Distinction Fox Glacier

#### DAY 8: Fox Glacier - Arthur's Pass - Christchurch (B,D)

Travel to Hokitika and visit the Greenstone Factory. Continue to Arthur's Pass and board the TranzAlpine, renowned as one of the great train journeys of the world. View rivers and valleys as you travel through the Waimakariri Basin, over massive viaducts and through the patchwork farmlands of the Canterbury Plains to the elegant city of Christchurch. On arrival your Ultimate Coach will be waiting to transfer you to your hotel.

**Hotel** The George

#### DAY 9: Christchurch - Picton - Wellington (B,D)

Travel along the East Coast to the seaside village of Kaikoura. Enjoy the spectacular scenery as you travel through Marlborough Country, famous for its food and wine. Continue to Picton, where you will board the Interislander Ferry for your journey through the Marlborough Sounds and across Cook Strait to Wellington.

**Hotel** InterContinental Wellington (Deluxe Room. 2 nights)

#### DAY 10: Wellington (B)

A highlight this morning will be time to explore Te Papa, New Zealand's National Museum with exhibits that embrace both Maori and European views. Reboard your coach for a city tour. Enjoy free time this afternoon and this evening is also free to choose your own dining arrangements.

#### DAY 11: Wellington - Taupo - Rotorua (B,D)

Depart Wellington and view the snow capped peaks of Mt Ruapehu and Mt Tongariro as you travel to Lake Taupo. Visit the spectacular Huka Falls then travel along the Thermal Explorer Highway to the geothermal wonderland of Rotorua. **Hotel** Regent of Rotorua or similar (2 nights)

#### DAY 12: Rotorua (B,SD)

Today begins with a gondola ride at the Skyline Rotorua for breakfast, with spectacular views and time for a thrilling luge ride! Next stop is the Agrodome for an action packed hour of farming entertainment and education that's unlike anything you've seen before. Continue to the Rainbow Springs Nature Park, home to the world's largest kiwi hatchery for a unique behind-the-scenes tour where over 1800 kiwi chicks have been hatched to

### > MUST DO OPTION



#### UNFORGETTABLE SKIPPERS CANYON

Take an excursion into Queenstown's backcountry to the historic Skippers Canyon. Your guide will recount the history of the goldmining era as well as show you dramatic landscapes only accessible by 4WD.

date. Enjoy free time before travelling to Te Puia to see the boiling mud pools and awesome geysers. This evening experience an entertaining Maori Hangi and Concert.

#### DAY 13: Rotorua - Auckland - Bay of Islands (B,D)

Depart Rotorua and travel north to the Parry Kauri Park to see a magnificent example of a Kauri Tree. Continue to the Bay of Islands and this afternoon enjoy a guided tour of the Waitangi Treaty Grounds, the location of the signing of the treaty between the Maori tribes and the British.

**Hotel** Scenic Hotel Bay of Islands (Deluxe Room. 2 nights)

#### DAY 14: Bay of Islands (B)

This morning cruise through the beautiful Bay of Islands on board a luxury catamaran to Cape Brett and the famous Hole in the Rock. Keep an eye out for bottlenose and common dolphins before returning to Paihia for a free afternoon where a range of optional activities are available. This evening is also free and you may like to enjoy a relaxing dinner cruise (optional).

#### DAY 15: Bay of Islands - Auckland (B,SD)

Depart the Bay of Islands this morning and travel via Whangarei and Dargaville to Matakoho. Enjoy a visit and informative talk at the Kauri Museum before continuing to Auckland for a city sights tour. This evening enjoy a farewell dinner including selected beverages with your new found friends.

**Hotel** Crowne Plaza Auckland

#### DAY 16: Depart Auckland (B)

Time to say goodbye. You will be transferred to the airport for your flight home after a memorable New Zealand holiday.



# 10 Day Ultimate South Island Escape



## GUARANTEED departures

2019	2020
Sep 1, 10	Jan 17
Oct 2, 16	Mar 1, 19
Nov 1	May 6
Dec 9	

**SEASONAL OFFER** Save £108 per person on highlighted departure dates.

## ALL INCLUSIVE tour price

Includes Ultimate 20 seat coach travel, 4.5 star hotel accommodation, most meals, sightseeing & attractions.

## TOUR ONLY from

Per person, twin share	£3205
Single supplement	£1065

## Stay a little longer

City	Twin share	Single
Christchurch	£146	£292

Extra night rates are per person and includes full breakfast and other luxe benefits. Subject to availability.



The TranzAlpine, one of the great train journeys of the world.

## NO HIDDEN EXTRAS

### PRE PAID ATTRACTIONS

- TranzAlpine Rail Journey
  - Cruise Lake Wakatipu on the TSS Earnslaw
  - Lakes District Museum
  - Milford Sound Nature Cruise & Lunch
  - Larnach Castle\*
  - City sights tour of Christchurch & Dunedin
- \*Guided tour.

### ULTIMATE SMALL GROUP TOURING

- Personalised Meet & Greet on arrival
- Return airport transfers in New Zealand
- Ultimate Small Group Tour Coach with 20 luxury leather reclining seats on a full size vehicle, 2 door access and panoramic windows
- Professional Coach Captain
- 9 nights 4.5 star hotel accommodation
- 2 two night stays
- Hotel portage
- 2 cruises
- All sightseeing and pre paid attractions
- Comprehensive documentation pack
- **BONUS** Group photo



### MEALS

- 9 cooked breakfasts
- 8 sumptuous dinners including 2 specialty dinners: Walter Peak Homestead, Queenstown; Farewell Dinner, selected beverages, Christchurch
- 1 picnic lunch
- 1 Ultimate High Tea: Larnach Castle

Note: Dinner on Day 1 not included for anyone arriving later than 8pm.

## ITINERARY

(B) Breakfast. (L) Lunch. (D) Dinner. (SD) Specialty Dinner.

### DAY 1: Arrive Christchurch (D)

On arrival into Christchurch you will be met by a Grand Pacific Tours representative who will transfer you to your hotel. Enjoy luxe benefits and a complimentary pre dinner drink as you meet your travelling companions.

**Hotel** Sudima Christchurch City

### DAY 2: Christchurch - Arthur's Pass - Franz Josef (B,D)

This morning board the TranzAlpine, renowned as one of the great train journeys of the world. Travel over massive viaducts, river valleys and spectacular gorges as you ascend to Arthur's Pass located in the centre of the Southern Alps. Board your Ultimate coach and travel to Hokitika, famous for its Greenstone before continuing to the township of Franz Josef where time is available to experience a scenic flight (optional, weather permitting) over the spectacular glaciers.

**Hotel** Te Waonui Forest Retreat

### DAY 3: Franz Josef - Queenstown (B)

See the snow capped peaks of the Southern Alps as you travel south along the West Coast. Continue via the Haast Pass, an area of stunning beauty before arriving into picturesque Queenstown, a year round resort situated on the shores of magical Lake Wakatipu. This evening is free and you may choose to dine out at one of the many fine restaurants.

**Hotel** Heritage Queenstown (2 nights)

### DAY 4: Queenstown (Free Day) (B,SD)

Today is a free day with plenty of sightseeing options to choose from. You may wish to enjoy the thrill of a jet boat ride, a heritage tour of the scenic Skippers Canyon or get up close to a Kiwi bird. This evening board the vintage steamship TSS Earnslaw and cruise across Lake Wakatipu to Walter Peak Station. Sit back, relax and enjoy a gourmet barbecue dinner which the chef will prepare in front of you at the Colonel's Homestead. After dinner enjoy a short farm tour then reboard the TSS Earnslaw for a sing along by the piano as your cruise back to Queenstown.

### DAY 5: Queenstown - Te Anau (B,D)

Enjoy a leisurely start this morning before travelling to Arrowtown, an old gold mining village where you visit the Lakes District Museum. This innovative museum is heavily involved in the protection of the historic buildings scattered around town. Continue to Te Anau, the gateway to Fiordland. Today you may like to visit the Te Anau Glow Worm Caves (optional).

**Hotel** Distinction Te Anau Hotel & Villas (2 nights)

### DAY 6: Te Anau - Milford Sound - Te Anau (B,L,D)

Depart Te Anau for a fascinating drive to Milford Sound where you board your launch for a nature cruise on this magnificent fiord. See the spectacular Bowen Falls and towering Mitre Peak as you enjoy a picnic lunch onboard. This afternoon return to Te Anau where some free time

>>  
**ICONIC  
 ATTRACTION**



is available. You may like to visit the Fiordland Cinema, specially constructed to screen the locally filmed movie *Ata Whenua - Shadowland* which will take you on an unforgettable journey (optional).

#### **DAY 7: Te Anau - Dunedin (B,D)**

Travel via Gore and Balclutha to Dunedin known as the 'Edinburgh of the South'. Enjoy an informative city tour followed by some free time to explore at leisure. Options available include a tour of the Speight's Brewery, which produces New Zealand's most popular beer, see Albatross in their natural habitat or take a tour of Olveston Historic Home, containing many treasures of a bygone era.

**Hotel** Distinction Dunedin

#### **DAY 8: Dunedin - Mt Cook (B,D)**

Travel along the Otago Peninsula to Larnach Castle, hear the tragic and scandalous stories on a guided tour. There is time to wander around this Garden of International Significance followed by an Ultimate High Tea served in the Grand Ballroom. Farewell Dunedin and travel to Oamaru famous for its limestone. Follow the Waitaki River and see Lake Benmore as you travel to Mt Cook.

**Hotel** The Hermitage Hotel (Aoraki Wing)

### **> MUST DO OPTIONZ**



#### **DART RIVER WILDERNESS JET**

Experience a spectacular journey into the heart of the Mt Aspiring National Park. Combine wilderness jet boating, a guided walk and backcountry tour by 4WD bus and take in the breathtaking scenery.



#### **AWESOME TOURS WILDLIFE TOUR**

From Dunedin travel to the beautiful Otago Peninsula where a variety of wildlife can be viewed in their natural habitat. Look out for NZ Fur Seals, Sea Lions, Little Blue and Yellow-Eyed Penguins and if you are lucky a Royal Albatross.

#### **DAY 9: Mt Cook - Christchurch (B,SD)**

This morning marvel at Mt Cook, New Zealand's highest peak. The opportunity is available to enjoy a scenic flight (optional, weather permitting) over the Southern Alps. Continue to Lake Tekapo and view the brilliant turquoise water, visit the Church of the Good Shepherd and see the Sheep Dog Statue before arriving into Christchurch for an introductory city sights tour. This evening enjoy a farewell dinner including selected beverages with your new found friends.

**Hotel** Sudima Christchurch City

#### **DAY 10: Depart Christchurch (B)**

Time to say goodbye. You will be transferred to the airport for your flight home after a memorable New Zealand holiday.

CLOCKWISE FROM TOP LEFT: The Milford Sound Cruise continues to be the highest rated South Island attraction by our travellers; relax in the luxury, leather reclining seat as you take in the stunning scenery; Queenstown, situated on the shores of Lake Wakatipu; Christchurch the gateway to the South Island.



# 9 Day Ultimate North Island Escape



## GUARANTEED departures

2019	2020
Sep 1	Jan 2, 30
Dec 9	Apr 18
	May 16

**SEASONAL OFFER** Save £108 per person on highlighted departure dates.

## ALL INCLUSIVE tour price

Includes Ultimate 20 seat coach travel, 4.5 star hotel accommodation, most meals, sightseeing & attractions.

## TOUR ONLY from

Per person, twin share	£2794
Single supplement	£854

## Stay a little longer

City	Twin share	Single
Auckland	£95	£189
Wellington	£95	£189

Extra night rates are per person and based on room only. Subject to availability.



In Rotorua you will see awesome geysers at Te Puia.

## NO HIDDEN EXTRAS

### PRE PAID ATTRACTIONS

- Kauri Museum\*
- Waitangi Treaty Grounds\*
- Dolphin / Hole in the Rock Cruise
- Sky Tower
- Hobbiton Movie Set Tour & Lunch
- Skyline Rotorua Gondola & Luge Ride
- Agrodome
- Thermal mud pools & geysers\*
- Te Puia traditional Maori Hanga & Concert
- Hawke's Bay Express Napier
- City sights tour of Auckland, Napier & Wellington

\*Guided tour.

### ULTIMATE SMALL GROUP TOURING

- Personalised Meet & Greet on arrival
- Return airport transfers in New Zealand
- Ultimate Small Group Tour Coach with 20 luxury leather reclining seats on a full size vehicle, 2 door access and panoramic windows

- Professional Coach Captain
- 8 nights 4.5 star hotel accommodation
- 2 two night stays
- Hotel portage
- 1 cruise
- All sightseeing and pre paid attractions
- Comprehensive documentation pack
- **BONUS** Group photo

### MEALS

- 8 cooked breakfasts including a specialty breakfast: Stratosfare Restaurant, Rotorua
- 7 sumptuous dinners including 2 specialty dinners: Maori Hanga & Concert, Rotorua; Farewell Dinner, selected beverages, Wellington
- 1 Shire's buffet lunch: Hobbiton

Note: Dinner on Day 1 not included for anyone arriving later than 8pm.

## ITINERARY

(B) Breakfast. (L) Lunch. (D) Dinner. (SD) Specialty Dinner.

### DAY 1: Arrive Auckland (D)

On arrival into Auckland you will be met by a Grand Pacific Tours representative who will transfer you to your hotel. Meet your travelling companions over a complimentary pre dinner drink.

**Hotel** Crowne Plaza Auckland

### DAY 2: Auckland - Bay of Islands (B,D)

Board the luxurious Ultimate Coach, travel to the Parry Kauri Park to see a magnificent example of a Kauri Tree. Enjoy a visit at the Kauri Museum in Matakohē, then travel to Paihia, situated in the heart of the beautiful Bay of Islands. Enjoy a guided tour of the Waitangi Treaty Grounds, the location of the signing of the treaty between the Maori tribes and the British.

**Hotel** Scenic Hotel Bay of Islands (Deluxe Room. 2 nights)

### DAY 3: Bay of Islands (Free Day) (B)

Today is a free day to choose from the many optional activities available including an evening dinner cruise (optional).

### DAY 4: Bay of Islands - Auckland (B,D)

This morning travel aboard a luxury catamaran to Cape Brett and the famous Hole in the Rock. Keep an eye out for bottlenose and common dolphins before returning to Paihia. Travel south via Whangarei to Auckland.

**Hotel** Crowne Plaza Auckland

### DAY 5: Auckland - Rotorua (B,L,D)

Enjoy a city sights tour including a visit to Sky Tower. Continue through the picturesque countryside to Hobbiton for a buffet lunch followed by a guided tour of the Movie Set from The Lord of

the Rings and The Hobbit trilogies.  
**Hotel** Regent of Rotorua (2 nights)

### DAY 6: Rotorua (B,SD)

Today begins with a gondola ride at the Skyline Rotorua for breakfast, spectacular views and time for a thrilling luge ride! Next stop is the Agrodome for an action-packed hour of farming entertainment. Enjoy some free time this afternoon before travelling to Te Puia to see the boiling mud pools and awesome geysers that Rotorua is famous for. Experience an entertaining Maori cultural performance followed by a Hanga feast prepared in the traditional way, over hot coals and buried in the ground.

### DAY 7: Rotorua - Napier (B,D)

Travel along the Thermal Explorer Highway to Huka Falls and Lake Taupo. Continue to Napier known as 'The Art Deco Capital'. Board the Hawke's Bay Express, where you will journey in style and hear informative commentary on the city's fascinating history. Enjoy free time this afternoon.

**Hotel** Scenic Hotel Te Pania

### DAY 8: Napier - Wellington (B,SD)

Travel south this morning into Wellington for a city tour of the nation's capital which will highlight the history and culture on show here. This evening enjoy a farewell dinner including selected beverages with your new found friends.

**Hotel** InterContinental Wellington (Deluxe Room)

### DAY 9: Depart Wellington (B)

Time to say goodbye. You will be transferred to the airport for your flight home after a memorable New Zealand holiday.

# 11 Day Ultimate SOLO Travellers Tour



## GUARANTEED departure

2020

Jan 7

## ALL INCLUSIVE tour price GUARANTEED SINGLE ROOM

Tour includes airfares, taxes, Ultimate 20 seat coach travel, 4.5 star hotel accommodation, most meals, sightseeing & attractions.

## TOUR ONLY from

**GUARANTEED Single Room £4826**

## Stay a little longer

City	Single
<b>Christchurch</b>	<b>£292</b>

Extra night rates are per person and includes full breakfast and other luxe benefits. Subject to availability.

>>  
**MORE  
SOLO  
OPTIONZ**

## Calling SOLO Travellers

Visit both Islands on a 48 seat coach on the **16 Day SOLO Tour. Refer to page 40 for more details.**

## Social Network

Connect via Facebook with your fellow travellers. Receive your invitation at time of booking.



Travel with like-minded individuals and make new friends.

## NO HIDDEN EXTRAS

### PRE PAID ATTRACTIONS

- International Antarctic Centre
- TranzAlpine Rail Journey
- Cruise Lake Wakatipu on the TSS Earnslaw
- Lakes District Museum
- Milford Sound Nature Cruise & Lunch
- Larnach Castle\*
- City sights tour of Christchurch & Dunedin

\*Guided tour.

### ULTIMATE SMALL GROUP TOURING

- Personalised Meet & Greet on arrival
- Return airport transfers in New Zealand
- Ultimate Small Group Tour Coach with 20 luxury leather reclining seats on a full size vehicle, 2 door access and panoramic windows
- Professional Coach Captain

- 10 nights 4.5 star hotel accommodation
- 3 two night stays
- Hotel portage
- 2 cruises
- All sightseeing and pre paid attractions
- Comprehensive documentation pack
- **BONUS** Group photo

### MEALS

- 10 cooked breakfasts
- 8 sumptuous dinners including 2 specialty dinners: Walter Peak Homestead, Queenstown; Farewell Dinner, selected beverages, Christchurch
- 1 Ultimate High Tea: Larnach Castle

Note: Dinner on Day 1 not included for anyone arriving later than 8pm.

## ITINERARY

(B) Breakfast. (L) Lunch. (D) Dinner. (SD) Specialty Dinner.

### DAY 1: Arrive Christchurch (D)

On arrival into Christchurch you will be met by a Grand Pacific Tours representative who will transfer you to your hotel. Enjoy luxe benefits and a complimentary pre dinner drink as you meet your travelling companions.

**Hotel** Sudima Christchurch City (2 nights)

### DAY 2: Christchurch (B)

Visit the International Antarctic Centre for an interactive experience of Antarctica, followed by a city tour of Christchurch and free time at leisure.

### DAY 3: Christchurch - Arthur's Pass - Franz Josef (B,D)

Board the TranzAlpine, travel through spectacular gorges to Arthur's Pass. Board your Ultimate coach and travel to Hokitika, before continuing to Franz Josef where time is available to experience a scenic flight (optional, weather permitting) over the spectacular glaciers.

**Hotel** Te Waonui Forest Retreat

### DAY 4: Franz Josef - Queenstown (B)

See the snow capped peaks of the Southern Alps as you travel south along the West Coast and the Haast Pass. Arrive into picturesque Queenstown where this evening is free to dine at leisure.

**Hotel** Millennium Queenstown (2 nights)

### DAY 5: Queenstown (Free Day) (B,SD)

Today is a free day for optional sightseeing. This evening board the vintage steamship TSS Earnslaw and cruise across Lake Wakatipu to Walter Peak Station. Enjoy a gourmet barbecue dinner at the Colonel's Homestead followed by a short farm tour and a sing along by the piano as your cruise back to Queenstown.

### DAY 6: Queenstown - Te Anau (B,D)

Travel to Arrowtown to visit the Lakes District Museum. Continue to Te Anau, the gateway to Fiordland.

**Hotel** Distinction Te Anau Hotel & Villas (2 nights)

### DAY 7: Te Anau - Milford Sound - Te Anau (B,L,D)

Enjoy a fascinating drive to Milford Sound for a nature cruise on this magnificent fiord. See the spectacular Bowen Falls and towering Mitre Peak as you enjoy a picnic lunch onboard. Return to Te Anau for free time.

### DAY 8: Te Anau - Dunedin (B,D)

Travel to Dunedin for a city tour followed by some free time to explore at leisure.

**Hotel** Distinction Dunedin

### DAY 9: Dunedin - Mt Cook (B,D)

Travel along the Otago Peninsula to Larnach Castle for a guided tour followed by an Ultimate High Tea. Travel to Oamaru famous for its limestone, follow the Waitaki River to Mt Cook, New Zealand's highest Peak.

**Hotel** The Hermitage Hotel (Aoraki Wing)

### DAY 10: Mt Cook - Christchurch (B,SD)

Today the opportunity is available to enjoy a scenic flight (optional, weather permitting) over the Southern Alps. Continue to Lake Tekapo to view the brilliant turquoise water, the Church of the Good Shepherd and the Sheep Dog Statue before arriving into Christchurch. This evening enjoy a farewell dinner including selected beverages with your new found friends.

**Hotel** Sudima Christchurch City

### DAY 11: Depart Christchurch (B)

Time to say goodbye. You will be transferred to the airport for your flight home after a memorable New Zealand holiday.



**“We have been so happy with our tour. We felt so special as we were given exceptional treatment throughout. Love it all and will recommend GPT to anyone and everyone!”**

**C. M. - Past traveller**







FULLY ESCORTED  
4 STAR HOTEL ACCOMMODATION  
MOST POPULAR

# Signature **Coach** Tours

## Experience the difference **Unique attractions**

**E**xplore the stunning regions and intriguing history of New Zealand on your choice of four unique itineraries. Relax in armchair comfort on a modern coach as you visit all the iconic attractions plus enjoy an array of distinctive experiences.



### **19 DAY NZ, RAIL, CRUISE & COACH HOLIDAY**

Experience the romance of 4 rail journeys, the majesty of 4 scenic cruises including an overnight on Milford Sound and the luxury of coach travel. Visit all the 'best of' attractions and enjoy 6 two night stays.



### **19 DAY NEW ZEALAND SHOWCASE**

Discover all the 'must see attractions' from top to bottom such as the Hobbiton Movie Set tour, cultural Rotorua, Napier's beautifully preserved art deco architecture, picturesque Queenstown and scenic Milford Sound.



### **10 DAY SOUTH ISLAND SPECTACULAR**

Escape to New Zealand's majestic South Island. Beginning in Christchurch, discover highlights such as the world-famous TranzAlpine, the rugged West Coast, picturesque Queenstown, scenic Milford Sound and mighty Mt Cook.



### **9 DAY NORTHERN SPECTACULAR**

Discover the North Island's history, culture and beautiful scenery. Visit Auckland the 'City of Sails', the stunning Bay of Islands, Hobbiton Movie Set, Rotorua, Napier and the 'Coolest little Capital' - Wellington.





# 19 Day New Zealand Rail, Cruise & Coach Holiday



## GUARANTEED departures

2019	2020
Sep 10, 19, 26	Jan 8, 18
Oct 7, 14, 25	Feb 5, 8, 18, 23
Nov 3, 13, 26	Mar 2, 7, 13, 16, 22, 26
	Apr 3, 6, 18, 21
	May 4

**SEASONAL OFFER** Save £162 per person on highlighted departure dates.

## ALL INCLUSIVE tour price

Fully escorted tour includes modern coach travel, 4 star hotel accommodation, most meals, sightseeing & attractions.

## TOUR ONLY from

Per person, twin share	£4270
Single supplement	£1405

## Stay a little longer

City	Twin share	Single
Auckland	£95	£189
Christchurch	£79	£146

Extra night rates are per person and based on room only. Subject to availability.



The Hongi, a traditional Maori greeting.

## NO HIDDEN EXTRAS

### PRE PAID ATTRACTIONS

- Kauri Museum\*
- Waitangi Treaty Grounds\*
- Dolphin / Hole in the Rock Cruise
- Glenbrook Vintage Railway
- Paradise Valley Springs\*
- Skyline Rotorua Gondola & Luge Ride
- Agrodome
- Thermal mud pools & geysers\*
- Te Puia traditional Maori Hanga & Concert
- Wellington Tramway Museum
- Te Papa, NZ's National Museum
- Cruise on the Interislander Ferry
- Coastal Pacific Rail Journey
- International Antarctic Centre
- Christchurch Tram
- TransAlpine Rail Journey
- Cruise Lake Wakatipu on the TSS Earnslaw
- Lakes District Museum
- **HIGHLIGHT** Milford Sound Overnight Cruise
- Taieri Gorge Limited Rail Journey
- Larnach Castle\*
- Haggis Ceremony & Gift
- Olveston Historic Home\*
- City sights tour of Auckland, Wellington, Christchurch & Dunedin

\*Guided tour is included with 1 guide per 24 travellers.

## ITINERARY

(B) Breakfast. (L) Lunch. (D) Dinner. (SD) Specialty Dinner.

### DAY 1: Arrive Auckland (D)

On arrival into Auckland you will be met by a Grand Pacific Tours representative and transferred to your hotel.

**Hotel** Grand Millennium Hotel

### DAY 2: Auckland - Bay of Islands (B,D)

Enjoy a city tour of Auckland, dubbed the 'City of Sails', before travelling to Matakohē to enjoy a visit and informative talk at the Kauri Museum. Travel via Whangarei to Paihia, situated in the heart of the beautiful Bay of Islands. Enjoy a guided tour of the Waitangi Treaty Grounds, the location of the signing of the treaty between the Maori tribes and the British.

**Hotel** Scenic Hotel Bay of Islands or similar (2 nights)

### DAY 3: Bay of Islands (Free Day) (B)

Today is a free day. Choose from the many optional activities available, including the Cape Reinga coach trip via Ninety Mile Beach or a spectacular scenic flight. This evening is also free and you may like to enjoy a relaxing dinner cruise (optional).

### DAY 4: Bay of Islands - Auckland (B,D)

This morning travel aboard a luxury catamaran to Cape Brett and the famous Hole in the Rock. Keep an eye out for bottlenose and common

### TOURING

- Personalised Meet & Greet on arrival
- Return airport transfers in New Zealand
- 48 seat modern coach travel, 2 door access, restroom, reclining seats and panoramic windows
- Professional Coach Captain & Tour Guide
- 17 nights 4 star hotel accommodation
- Milford Sound Overnight Cruise
- 6 two night stays
- Hotel portage
- 4 rail journeys
- 4 cruises
- All sightseeing and pre paid attractions
- Comprehensive documentation pack

### MEALS

- 18 cooked breakfasts including a specialty breakfast: Stratosfare Restaurant, Rotorua
- 14 sumptuous dinners including 4 specialty dinners: Maori Hanga & Concert, Rotorua; Walter Peak Homestead, Queenstown; Haggis Ceremony, Dunedin; Farewell Dinner, Christchurch
- 2 delicious morning teas

Note: Dinner on Day 1 not included for anyone arriving later than 8pm.

dolphins before returning to Paihia. Travel south via Whangarei, call into the Parry Kauri Park to see a magnificent example of a Kauri Tree before returning to Auckland.

**Hotel** Grand Millennium Hotel

### DAY 5: Auckland - Rotorua (B,D)

This morning travel to Glenbrook Vintage Railway for a nostalgic 15 kilometre trip back in time on a beautifully restored vintage steam train. Visit the restoration workshop and on return to Glenbrook Station, morning tea will be served. Depart Glenbrook and travel through magnificent countryside of rolling hills and green pastures famous for dairying. Continue to Rotorua to visit Paradise Valley Springs, a superb wildlife park where you can hand feed rainbow trout.

**Hotel** Sudima Hotel Lake Rotorua (Superior Room. 2 nights)

### DAY 6: Rotorua (B,SD)

Today begins with a gondola ride and breakfast at the Skyline Rotorua. There is also time for a luge ride! Next stop is Agrodome for an action packed hour of farming entertainment and education that's unlike anything you've seen before. Enjoy some free time this afternoon before travelling to Te Puia to see the boiling mud pools and awesome geysers that Rotorua is famous for. This evening experience an entertaining Maori Hanga and Concert.

### DAY 7: Rotorua - Wellington (B,D)

Travel along the Thermal Explorer Highway to the spectacular Huka Falls. Continue to Lake Taupo for some free time to enjoy this scenic lakeside town. Travel via the Tongariro National Park to the Wellington Tramway Museum to view a display of tramway history and enjoy a nostalgic trip on one of the original trams that served Wellington city.

**Hotel** James Cook Hotel Grand Chancellor (Lambton Room. 2 nights)

### DAY 8: Wellington (B)

A highlight this morning will be time to explore Te Papa, New Zealand's National Museum with exhibits that embrace both Maori and European views. Reboard your coach for an extensive city tour. Enjoy time at leisure this afternoon and this evening is also free to explore Wellington's lively food scene.

### DAY 9: Wellington - Christchurch (B,D)



This morning board the Interislander Ferry, cross Cook Strait and travel through the Marlborough Sounds to Picton. Join the Coastal Pacific, a truly spectacular rail journey that showcases the Kaikoura mountain ranges on one side and the rugged scenic coastline on the other travelling through numerous tunnels and across several bridges. Enjoy a two night stay in the garden city of Christchurch.

**Hotel** Distinction Christchurch (2 nights)

### DAY 10: Christchurch (B)

Today visit the International Antarctic Centre, designed to provide an informative account of life in Antarctica. This is followed by an introductory city tour of Christchurch. This afternoon includes a journey on board the Christchurch Tram at your leisure, one of Christchurch's leading attractions. This evening is free to explore the local cuisine.

### DAY 11: Christchurch - Arthur's Pass - Franz Josef (B,D)



This morning board the TransAlpine, one of the great train journeys of the world. Travel over massive viaducts, river valleys and spectacular gorges as you ascend to Arthur's Pass located in the centre of the Southern Alps. Board your coach and travel to Hokitika, famous for its Greenstone before arriving at the township of Franz Josef where time is available to experience a scenic flight (optional, weather permitting) over the spectacular glaciers.

**Hotel** Scenic Hotel Franz Josef Glacier (Douglas Wing)

### DAY 12: Franz Josef - Queenstown (B)

See the snow capped peaks of the Southern Alps as you travel south via the Haast Pass, an area of stunning beauty before arriving into picturesque Queenstown, a year round resort situated on the shores of magical Lake Wakatipu. This evening is free to dine at one of the many fine restaurants.

**Hotel** Copthorne Hotel and Resort Lakefront (2 nights)

### DAY 13: Queenstown (Free Day) (B,SD)

Today is a free day for you to explore Queenstown. Your Tour Guide and Coach Captain are available to assist with the many options available. This evening board the vintage steamship TSS Earnslaw and cruise across Lake Wakatipu to Walter Peak Station. Sit back, relax and enjoy a gourmet barbecue dinner which the chef will prepare in front of you at the Colonel's Homestead. After dinner enjoy a short farm tour then reboard the TSS Earnslaw for a sing along by the piano on your return cruise.

### DAY 14: Queenstown - Milford Sound Overnight Cruise (B,D)



This morning travel to Arrowtown and visit the Lakes District Museum. Continue via Te Anau to Milford Sound and board the Milford Mariner for your amazing overnight cruise. There is plenty of time to view the fiord's spectacular waterfalls, rainforest, mountains and wildlife - you're bound to encounter seals and if you're lucky maybe dolphins and penguins. As evening falls enjoy a delicious carvery buffet prepared freshly by the onboard chef.

**Overnight** Milford Mariner

### DAY 15: Milford Sound - Te Anau (B,D)

Start the day with a hearty breakfast before heading back out to the Tasman Sea (weather permitting) to explore more of the fiord. Return back to the wharf to meet your coach and enjoy the scenic drive to Te Anau where you will enjoy an afternoon at leisure. You may like to visit the Te Anau Glow Worm Caves (optional).

**Hotel** Distinction Luxmore (Deluxe Room)

### DAY 16: Te Anau - Dunedin (B,D)



Travel via Gore and Balclutha to Pukerangi to board The Taieri Gorge Limited for a journey through spectacular scenery only accessible by rail. On arrival at Dunedin's historic Edwardian Railway Station your coach will transfer you to the hotel.

**Hotel** Scenic Hotel Southern Cross (2 nights)

### DAY 17: Dunedin (B,SD)

This morning travel along the Otago Peninsula to Larnach Castle where you hear of the tragic and scandalous history on a guided tour. Enjoy time to wander around this Garden of International Significance followed by a delicious Devonshire Tea. Return to the city for an informative city tour followed by some free time. You might be interested in a tour of Speights Brewery (optional) or the chance to see wildlife in their natural habitat (optional). Tonight a Scottish evening will be presented comprising of bagpipes, great food, Haggis Ceremony and gift.

### DAY 18: Dunedin - Christchurch (B,SD)

This morning visit Olveston, a prosperous merchants' home from the turn of the century before travelling to Oamaru, famous for its limestone. This evening enjoy a farewell dinner with your new found friends.

**Hotel** Sudima Hotel Christchurch Airport

### DAY 19: Depart Christchurch (B)

Time to say goodbye. You will be transferred to the airport for your flight home after a memorable New Zealand holiday.



### Milford Sound Overnight Cruise

For the ultimate Milford Sound experience, spend the night on board the Milford Mariner.

Your overnight cruise includes:

- Cruise on a traditionally designed vessel
- Cabins with private ensuite
- Superb evening carvery buffet prepared freshly by an onboard chef
- Cooked breakfast
- Tender craft and kayaking activities
- Specialist onboard nature guide
- Relaxation time allowing you to view the fiords spectacular waterfalls, rainforest, mountains and wildlife



TOP TO BOTTOM: You may see amazing wildlife on the Coast Pacific; the TransAlpine rated one of the great train journeys of the world; explore the Waitangi Treaty Grounds.



# 19 Day New Zealand Showcase



## GUARANTEED departures

2019	2020
Sep 12, 15, 30	Jan 22
Oct 12, 18, 27	Feb 6, 9, 14, 19, 21
Nov 5, 14, 18	Mar 4, 11, 14, 20, 24
	Apr 9, 14, 25
	May 2

**SEASONAL OFFER** Save £162 per person on highlighted departure dates.

## ALL INCLUSIVE tour price

Fully escorted tour includes modern coach travel, 4 star hotel accommodation, most meals, sightseeing & attractions.

## TOUR ONLY from

Per person, twin share	£3891
Single supplement	£1270

## Stay a little longer

City	Twin share	Single
Auckland	£86	£173
Christchurch	£73	£146

Extra night rates are per person and based on room only. Subject to availability.



Experience an entertaining Maori Hangi and Concert at Te Puia.

## NO HIDDEN EXTRAS

### PRE PAID ATTRACTIONS

- Kauri Museum\*
- Waitangi Treaty Grounds\*
- Dolphin / Hole in the Rock Cruise
- Sky Tower
- Hobbiton Movie Set Tour & Lunch
- Skyline Rotorua Gondola & Luge Ride
- Agrodome
- Thermal mud pools & geysers\*
- Te Puia traditional Maori Hangi & Concert
- Te Papa, NZ's National Museum
- Cruise on the Interislander Ferry
- TransAlpine Rail Journey
- Cruise Lake Wakatipu on the TSS Earnslaw
- Lakes District Museum
- Milford Sound Cruise & Lunch
- Larnach Castle\*
- Haggis Ceremony & Gift
- City sights tour of Auckland, Napier, Wellington, Dunedin & Christchurch

\*Guided tour is included with 1 guide per 24 travellers.

### TOURING

- Personalised Meet & Greet on arrival
- Return airport transfers in New Zealand
- 48 seat modern coach travel, 2 door access, restroom, reclining seats and panoramic windows
- Professional Coach Captain & Tour Guide
- 18 nights 4 star hotel accommodation
- 4 two night stays
- Hotel portage
- 4 cruises
- All sightseeing and pre paid attractions
- Comprehensive documentation pack

### MEALS

- 18 cooked breakfasts including a specialty breakfast: Stratosfare Restaurant, Rotorua
- 16 sumptuous dinners including 4 specialty dinners: Maori Hangi & Concert, Rotorua; Walter Peak Homestead, Queenstown; Haggis Ceremony, Dunedin; Farewell Dinner, Christchurch
- 2 lunches including a Shire's buffet lunch: Hobbiton
- 1 delicious Devonshire Tea: Larnach Castle

Note: Dinner on Day 1 not included for anyone arriving later than 8pm.

## ITINERARY

(B) Breakfast. (L) Lunch. (D) Dinner. (SD) Specialty Dinner.

### DAY 1: Arrive Auckland (D)

On arrival into Auckland you will be met by a Grand Pacific Tours representative and transferred to your hotel.

**Hotel** Skycity Hotel Auckland

### DAY 2: Auckland - Bay of Islands (B,D)

Depart Auckland and travel to the Parry Kauri Park to see a magnificent example of a Kauri Tree. Enjoy a visit and informative talk at the Kauri Museum in Matakohē, then travel via Whangarei to Paihia, situated in the heart of the beautiful Bay of Islands. Enjoy a guided tour of the Waitangi Treaty Grounds, the location of the signing of the treaty between the Maori tribes and the British.

**Hotel** Scenic Hotel Bay of Islands or similar (2 nights)

### DAY 3: Bay of Islands (Free Day) (B)

Today is a free day. Choose from the many optional activities available, including the Cape Reinga coach trip via Ninety Mile Beach or a spectacular scenic flight. This evening is also free and you may like to enjoy a relaxing dinner cruise (optional).

### DAY 4: Bay of Islands - Auckland (B,D)

This morning travel aboard a luxury catamaran to Cape Brett and the famous Hole in the Rock. Keep an eye out for bottlenose and common dolphins before returning to Paihia. Travel south via Whangarei to Auckland. This afternoon includes

a visit to Sky Tower at your leisure, one of New Zealand's most spectacular attractions.

**Hotel** Skycity Hotel Auckland

### DAY 5: Auckland - Rotorua (B,L,D)

Today enjoy a city sights tour of Auckland. Continue through the picturesque countryside to Hobbiton for a buffet lunch. This is followed by a guided tour of the Movie Set from The Lord of the Rings and The Hobbit trilogies. Your guide will recount details of how this beautiful piece of farmland was transformed into The Shire from Middle Earth.

**Hotel** Sudima Hotel Lake Rotorua (Superior Room. 2 nights)

### DAY 6: Rotorua (B,SD)

Today begins with a gondola ride and breakfast at the Skyline Rotorua. There is also time for a luge ride! Next stop is Agrodome for an action packed hour of farming entertainment and education that's unlike anything you've seen before. Enjoy some free time this afternoon before travelling to Te Puia to see the boiling mud pools and awesome geysers that Rotorua is famous for. This evening experience an entertaining Maori Hangi and Concert.

### DAY 7: Rotorua - Napier - Masterton (B,D)

Depart Rotorua and travel along the Thermal Explorer Highway to Huka Falls and Lake Taupo. Continue to Napier known as 'The Art Deco Capital', where a city tour will showcase an impressive collection of art deco buildings.



Enjoy some free time to explore the fascinating architecture before travelling through the Wairarapa, an emerging cool-climate wine region.  
**Hotel** Copthorne Hotel and Resort Solway Park

#### DAY 8: Masterton - Greytown - Wellington (B,D)

Enjoy a leisurely start to the day before travelling to Greytown where you see the most complete example of original Victorian wooden architecture. Drive through the scenic Rimutaka Mountain Range into Wellington, where you will enjoy a city tour of the nation's capital which will highlight the history and culture on show here.

**Hotel** James Cook Hotel Grand Chancellor (Lambton Room)

#### DAY 9: Wellington - Picton - Blenheim (B,D)

A highlight this morning will be time to explore Te Papa, New Zealand's National Museum with exhibits that embrace both Maori and European views. This afternoon board the Interislander Ferry, cross Cook Strait and travel through the Marlborough Sounds to Picton where you board your coach for the short journey to Blenheim.

**Hotel** Scenic Hotel Marlborough

#### DAY 10: Blenheim - Kaikoura - Christchurch (B,D)

Tour through Marlborough Country, famous for its food and wine, then travel to the seaside village of Kaikoura. Continue onto the garden city of Christchurch.

**Hotel** Distinction Christchurch

#### DAY 11: Christchurch - Arthur's Pass - Franz Josef (B,D)

This morning board the TransAlpine, renowned as one of the great train journeys of the world. Travel over massive viaducts, river valleys and spectacular gorges as you ascend to Arthur's Pass located in the centre of the Southern Alps. Board your coach and travel to Hokitika, famous for its Greenstone before continuing to the township of Franz Josef where time is available to experience a scenic flight (optional, weather permitting) over the spectacular glaciers.

**Hotel** Scenic Hotel Franz Josef Glacier (Douglas Wing)



### MUST DO OPTION



#### VOLCANIC AIR

During your time in Rotorua, experience a flight in either a floatplane or helicopter to experience the stunning lakes district, vibrant geothermal reserves and remarkable volcanoes. Volcanic Air have an option for everyone!

#### DAY 12: Franz Josef - Queenstown (B)

See the snow capped peaks of the Southern Alps as you travel south along the West Coast. Continue via the Haast Pass, an area of stunning beauty before arriving into picturesque Queenstown, a year round resort situated on the shores of magical Lake Wakatipu. This evening is free and you may choose to dine out at one of the many fine restaurants.

**Hotel** Mercure Queenstown Resort (Lakeview Room. 2 nights)

#### DAY 13: Queenstown (Free Day) (B,SD)

Today is a free day. There are plenty of sightseeing options and your Coach Captain and Tour Guide are available to assist. You may wish to enjoy the thrill of a jet boat ride, a heritage tour of the scenic Skippers Canyon or get up close to a Kiwi bird. This evening board the vintage steamship TSS Earnslaw and cruise across Lake Wakatipu to Walter Peak Station. Sit back, relax and enjoy a gourmet barbecue dinner which the chef will prepare in front of you at the Colonel's Homestead. After dinner enjoy a short farm tour then reboard the TSS Earnslaw for a sing along by the piano as you cruise back to Queenstown.

#### DAY 14: Queenstown - Te Anau (B,D)

Enjoy a leisurely start this morning before travelling to Arrowtown, an old gold mining village where you visit the Lakes District Museum. Continue to Te Anau, the gateway to Fiordland. Today you may like to visit the Te Anau Glow Worm Caves (optional).

**Hotel** Distinction Luxmore Hotel (Deluxe Rooms. 2 nights)



LEFT TO RIGHT: Enjoy a tour of the Hobbiton Movie Set; Waitangi Treaty Grounds; cruise the spectacular Milford Sound.

#### DAY 15: Te Anau - Milford Sound - Te Anau (B,L,D)

Depart Te Anau for a fascinating drive to Milford Sound where you board your launch for a cruise on this magnificent fiord. See the spectacular Bowen Falls and towering Mitre Peak as you enjoy a picnic lunch onboard. This afternoon return to Te Anau where some free time is available. You might like to cap off your Fiordland experience by watching the breathtaking film, Ata Whenua - Shadowland, which screens at the Fiordland Cinema (optional).

#### DAY 16: Te Anau - Dunedin (B,SD)

Travel via Gore and Balclutha to Dunedin known as the 'Edinburgh of the South' and enjoy an informative city tour. Travel along the Otago Peninsula to Larnach Castle where you will hear of the tragic and scandalous history on a guided tour. Enjoy time to wander around this Garden of International Significance followed by a delicious Devonshire Tea. Tonight a Scottish evening will be presented comprising of bagpipes, great food, special Haggis Ceremony and gift.

**Hotel** Scenic Hotel Dunedin City

#### DAY 17: Dunedin - Mt Cook - Twizel (B,D)

Farewell Dunedin and travel to Oamaru famous for its limestone. Follow the Waitaki River and see Lake Benmore as you continue to marvel at Mt Cook, New Zealand's highest peak. The opportunity is available to enjoy a scenic flight (optional, weather permitting) over the Southern Alps. Travel to Twizel for your overnight stay.

**Hotel** MacKenzie Country Hotel

#### DAY 18: Twizel - Christchurch (B,SD)

Continue to Lake Tekapo and view the brilliant turquoise water, visit the Church of the Good Shepherd and see the Sheep Dog Statue before arriving into Christchurch for an informative city tour. This evening enjoy a farewell dinner with your new found friends.

**Hotel** Sudima Hotel Christchurch Airport

#### DAY 19: Depart Christchurch (B)

Time to say goodbye. You will be transferred to the airport for your flight home after a memorable New Zealand holiday.



# 10 Day South Island Spectacular



## GUARANTEED departures

2019	2020
Sep 21, 24	Jan 31
Oct 9, 21, 27	Feb 12, 15, 18, 23, 28
Nov 5, 14, 23, 27	Mar 1, 13, 20, 23, 29
	Apr 2, 18, 23
	May 4, 11

**SEASONAL OFFER** Save £108 per person on highlighted departure dates.

## ALL INCLUSIVE tour price

Fully escorted tour includes modern coach travel, 4 star hotel accommodation, most meals, sightseeing & attractions.

## TOUR ONLY from

Per person, twin share	£2297
Single supplement	£703

## Stay a little longer

City	Twin share	Single
Christchurch	£73	£146

Extra night rates are per person and based on room only. Subject to availability.

## NO HIDDEN EXTRAS

### PRE PAID ATTRACTIONS

- TranzAlpine Rail Journey
- Cruise Lake Wakatipu on the TSS Earnslaw
- Lakes District Museum
- Milford Sound Cruise & Lunch
- Larnach Castle\*
- Haggis Ceremony & Gift
- City sights tour of Dunedin & Christchurch

\*Guided tour is included with 1 guide per 24 travellers.

### TOURING

- Personalised Meet & Greet on arrival
- Return airport transfers in New Zealand
- 48 seat modern coach travel, 2 door access, restroom, reclining seats and panoramic windows
- Professional Coach Captain & Tour Guide

- 9 nights 4 star hotel accommodation
- 2 two night stays
- Hotel portorage
- 2 cruises
- All sightseeing and pre paid attractions
- Comprehensive documentation pack

### MEALS

- 9 cooked breakfasts
- 8 sumptuous dinners including 3 specialty dinners: Walter Peak Homestead, Queenstown; Haggis Ceremony, Dunedin; Farewell Dinner, Christchurch
- 1 picnic lunch
- 1 delicious Devonshire Tea: Larnach Castle

Note: Dinner on Day 1 not included for anyone arriving later than 8pm.

## ITINERARY

(B) Breakfast. (L) Lunch. (D) Dinner. (SD) Specialty Dinner.

### DAY 1: Arrive Christchurch (D)

On arrival into Christchurch you will be met by a Grand Pacific Tours representative and transferred to your hotel.

**Hotel** Distinction Christchurch

### DAY 2: Christchurch - Arthur's Pass - Franz Josef (B,D)

This morning board the TranzAlpine, renowned as one of the great train journeys of the world. Travel through spectacular gorges to Arthur's Pass. Board your coach and travel to Hokitika, before continuing to Franz Josef. Time is available to experience a scenic flight (optional, weather permitting) over the spectacular glaciers.

**Hotel** Scenic Hotel Franz Josef Glacier (Douglas Wing)

### DAY 3: Franz Josef - Queenstown (B)

See the snow capped peaks of the Southern Alps as you continue via the Haast Pass, an area of stunning beauty before arriving into picturesque Queenstown. This evening is free to dine at leisure.

**Hotel** Mercure Queenstown Resort (Lakeview Rooms. 2 nights)

### DAY 4: Queenstown (Free Day) (B,SD)

Today is a free day. There are plenty of sightseeing options and your Coach Captain and Tour Guide are available to assist. This evening board the vintage steamship TSS Earnslaw and cruise across Lake Wakatipu to Walter Peak Station. Enjoy the best of New Zealand's high country cuisine.

### DAY 5: Queenstown - Te Anau (B,D)

Enjoy a leisurely start this morning before travelling to Arrowtown to visit the Lakes District Museum. Continue to Te Anau, the gateway to Fiordland.

**Hotel** Distinction Luxmore Hotel (Deluxe Rooms. 2 nights)

### DAY 6: Te Anau - Milford Sound - Te Anau (B,L,D)

Depart Te Anau for a fascinating drive to Milford Sound where you board your launch for a cruise on this magnificent fiord. See the spectacular Bowen Falls and towering Mitre Peak as you enjoy a picnic lunch onboard. This afternoon return to Te Anau where some free time is available.

### DAY 7: Te Anau - Dunedin (B,SD)

Travel via Gore and Balclutha to Dunedin for an informative city tour. Travel along the Otago Peninsula to Larnach Castle for a guided tour. Tonight a Scottish evening will be presented comprising of bagpipes, great food, special Haggis Ceremony and gift.

**Hotel** Scenic Hotel Dunedin City

### DAY 8: Dunedin - Mt Cook - Twizel (B,D)

Farewell Dunedin and travel to Oamaru famous for its limestone. Marvel at Mt Cook, New Zealand's highest peak where the opportunity is available to enjoy a scenic flight (optional, weather permitting) over the Southern Alps. Travel to Twizel for your overnight stay.

**Hotel** MacKenzie Country Hotel

### DAY 9: Twizel - Christchurch (B,SD)

Continue to Lake Tekapo and view the brilliant turquoise water, visit the Church of the Good Shepherd and see the Sheep Dog Statue before arriving into Christchurch for an informative city tour. This evening enjoy a farewell dinner with your new found friends.

**Hotel** Sudima Hotel Christchurch Airport

### DAY 10: Depart Christchurch (B)

Time to say goodbye. You'll be transferred to the airport for your flight home after a memorable New Zealand holiday.



The Milford Sound Cruise continues to be the highest rated South Island attraction by our travellers.

# 9 Day Northern Spectacular



## GUARANTEED departures

2019	2020
Sep 12, 15, 30	Jan 22
Oct 12, 18, 27	Feb 6, 9, 14, 19, 21
Nov 5, 14, 18	Mar 4, 11, 14, 20, 24
	Apr 9, 14, 25
	May 2

**SEASONAL OFFER** Save £108 per person on highlighted departure dates.

## ALL INCLUSIVE tour price

Fully escorted tour includes modern coach travel, 4 star hotel accommodation, most meals, sightseeing & attractions.

## TOUR ONLY from

Per person, twin share	£2010
Single supplement	£611

## Stay a little longer

City	Twin share	Single
Auckland	£86	£173
Wellington	£81	£162

Extra night rates are per person and based on room only. Subject to availability.

## NO HIDDEN EXTRAS

### PRE PAID ATTRACTIONS

- Kauri Museum\*
- Waitangi Treaty Grounds\*
- Dolphin / Hole in the Rock Cruise
- Sky Tower
- Hobbiton Movie Set Tour & lunch
- Skyline Rotorua Gondola & Luge Ride
- Agrodome
- Thermal mud pools & geysers\*
- Te Puia traditional Maori Hangi & Concert
- City sights tour of Auckland, Napier & Wellington

\*Guided tour is included with 1 guide per 24 travellers.

### TOURING

- Personalised Meet & Greet on arrival
- Return airport transfers in New Zealand

## ITINERARY

(B) Breakfast. (L) Lunch. (D) Dinner. (SD) Speciality Dinner.

### DAY 1: Arrive Auckland (D)

On arrival into Auckland you will be met by a Grand Pacific Tours representative and transferred to your hotel.

**Hotel** Skycity Hotel Auckland

### DAY 2: Auckland - Bay of Islands (B,D)

Depart Auckland and travel to the Parry Kauri Park to see a magnificent example of a Kauri Tree. Enjoy a visit at the Kauri Museum, then travel to the beautiful Bay of Islands. Enjoy a guided tour of the Waitangi Treaty Grounds, the location of the signing of the treaty between the Maori tribes and the British.

**Hotel** Scenic Hotel Bay of Islands or similar (2 nights)

### DAY 3: Bay of Islands (Free Day) (B)

Today is a free day. Choose from the many optional activities available, including the Cape Reinga coach trip via Ninety Mile Beach or a spectacular scenic flight. This evening is also free and you may like to enjoy a relaxing dinner cruise (optional).

### DAY 4: Bay of Islands - Auckland (B,D)

This morning travel aboard a luxury catamaran to Cape Brett and the famous Hole in the Rock. Keep an eye out for bottlenose and common dolphins. Travel south to Auckland. This afternoon includes a visit to Sky Tower, one of New Zealand's most spectacular attractions.

**Hotel** Skycity Hotel Auckland

### DAY 5: Auckland - Rotorua (B,L,D)

Today enjoy a city sights tour of Auckland. Continue through the picturesque countryside to Hobbiton for a buffet lunch. This is followed by a guided tour of the Movie Set from The Lord of the Rings and The Hobbit trilogies. Your guide will recount

- 48 seat modern coach travel, 2 door access, restroom, reclining seats and panoramic windows
- Professional Coach Captain & Tour Guide
- 8 nights 4 star hotel accommodation
- 2 two night stays
- Hotel portage
- 1 cruise
- All sightseeing and pre paid attractions
- Comprehensive documentation pack

### MEALS

- 8 cooked breakfasts including a specialty breakfast: Stratosfare Restaurant, Rotorua
- 7 sumptuous dinners including a specialty dinner: Maori Hangi & Concert, Rotorua
- 1 Shire's buffet lunch: Hobbiton

Note: Dinner on Day 1 not included for anyone arriving later than 8pm.

details of how this beautiful piece of farmland was transformed into The Shire from Middle Earth.

**Hotel** Sudima Hotel Lake Rotorua (Superior Room. 2 nights)

### DAY 6: Rotorua (B,SD)

Today begins with a Gondola ride to Stratosfare Restaurant where a buffet breakfast and spectacular views are on offer. Travel to the Agrodome for an action packed hour of farming entertainment. Enjoy some free time this afternoon before travelling to Te Puia to see the boiling mud pools and awesome Geysers that Rotorua is famous for. This evening experience an entertaining Maori Hangi and Concert.

### DAY 7: Rotorua - Napier - Masterton (B,D)

Depart Rotorua and travel to Huka Falls and Lake Taupo. Continue to Napier known as 'The Art Deco Capital', where a city tour will showcase the most comprehensive collection of art deco buildings in the world. Enjoy some free time to explore on your own or take a guided walk (optional). Travel to the Wairarapa, an emerging cool-climate wine region.

**Hotel** Copthorne Hotel and Resort Solway Park

### DAY 8: Masterton - Greytown - Wellington (B,D)

Enjoy a leisurely start to the day before travelling to Greytown where you see the most complete examples of original Victorian wooden architecture. Drive through the Rimutaka Mountain Range into Wellington. Enjoy a city tour of the nation's capital which highlights the history and culture.

**Hotel** James Cook Hotel Grand Chancellor (Lambton Room)

### DAY 9: Depart Wellington (B)

Time to say goodbye. You will be transferred to the airport for your flight home after a memorable New Zealand holiday.



Enjoy a tour of the movie set from the The Hobbit trilogies.





**"Excellent! The included visits in the tour and the meals were more than we expected. Very good value for what we paid. We enjoyed the company of all our fellow travellers."**

**I. & T. P. - Past travellers**





FULLY ESCORTED  
3.5 STAR HOTEL ACCOMMODATION  
EXTENSIVE INCLUSIONS

# Affordable **Coach** Tours

## Unbeatable value **No hidden extras**

**E**njoy an unbeatable value for money experience which includes a wide range of attractions that set these tours apart. Travel on a modern, 48 seater coach and visit the 'must do' icons of New Zealand without breaking the budget.



### 16 DAY HIGHLIGHTS OF NEW ZEALAND TOUR

Experience all the iconic attractions of New Zealand including breathtaking Milford Sound and world renowned rail journey, the TranzAlpine. Includes two night stays in Queenstown, Wellington, Rotorua and the Bay of Islands.



### 14 DAY NEW ZEALAND PANORAMA TOUR

Experience the natural beauty and unique culture of both islands by modern coach without breaking the budget. Featuring an extensive list of attractions with 3 two night stays including exhilarating Queenstown.



### 9 DAY TASTE OF THE SOUTH ISLAND

Showcases New Zealand's breathtaking South Island scenery as you relax on board the comfort of a modern coach. Witness a palette of dramatic landscapes and enjoy a number of iconic attractions.



### 8 DAY TASTE OF THE NORTH ISLAND

A comprehensive tour designed for the time conscious traveller. Immerse yourself in the wonders of the North Island including Wellington, cultural Rotorua, the beautiful Bay of Islands and cosmopolitan Auckland.





# 16 Day Highlights of New Zealand Tour



## GUARANTEED departures

2019	2020
Sep 10, 19, 26	Jan 8, 18
Oct 7, 14, 18, 27	Feb 2, 5, 8, 9, 12, 14,
Nov 3, 8, 13, 18	19, 23
	Mar 2, 4, 7, 11, 16, 22,
	24, 26
	Apr 6, 8, 14, 25
	May 2

**SEASONAL OFFER** Save £162 per person on highlighted departure dates.

## ALL INCLUSIVE tour price

Fully escorted tour includes modern coach travel, 3.5 star hotel accommodation, most meals, sightseeing & attractions.

## TOUR ONLY from

Per person, twin share	£3189
Single supplement	£957

## Stay a little longer

City	Twin share	Single
Christchurch	£65	£130
Auckland	£81	£162

Extra night rates are per person and based on room only. Subject to availability.

## NO HIDDEN EXTRAS

### PRE PAID ATTRACTIONS

- Haggis Ceremony & Gift
- Larnach Castle\*
- Milford Sound Cruise & Lunch
- Cruise Lake Wakatipu on the TSS Earnslaw
- Lakes District Museum
- TranzAlpine Rail Journey
- Cruise on the Interislander Ferry
- Te Papa, NZ's National Museum
- Skyline Rotorua Gondola & Luge Ride
- Agrodome
- Thermal mud pools & geysers\*
- Traditional Maori Hangi & Concert
- Dolphin / Hole in the Rock Cruise
- Kauri Museum\*
- City sights tour of Christchurch, Dunedin, Wellington & Auckland

\*Guided tour is included with 1 guide per 24 travellers.

### TOURING

- Personalised Meet & Greet on arrival
- Return airport transfers in New Zealand
- 48 seat modern coach travel, 2 door access, restroom, reclining seats and panoramic windows
- Professional Coach Captain & Tour Guide
- 15 nights 3.5 star hotel accommodation
- 4 two night stays
- Hotel portage
- 4 cruises
- All sightseeing and pre paid attractions
- Comprehensive documentation pack

### MEALS

- 15 cooked breakfasts including a specialty breakfast: Stratosfare Restaurant, Rotorua
- 12 sumptuous dinners including 3 specialty dinners: Haggis Ceremony, Dunedin; Walter Peak Homestead, Queenstown; Maori Hangi & Concert, Rotorua
- 1 picnic lunch
- 1 delicious Devonshire Tea: Larnach Castle

Note: Dinner on Day 1 not included for anyone arriving later than 8pm.

## ITINERARY

(B) Breakfast. (L) Lunch. (D) Dinner. (SD) Specialty Dinner.

### DAY 1: Arrive Christchurch (D)

On arrival into Christchurch you will be met by a Grand Pacific Tours representative and transferred to your hotel.

**Hotel** Quality Hotel Elms or similar

### DAY 2: Christchurch - Omarama (B,D)

After an introductory city sights tour depart Christchurch and travel through the southern Canterbury Plains to Lake Tekapo. See the brilliant turquoise water, visit The Church of the Good Shepherd and view the Sheep Dog Statue. Marvel at the spectacular mountain ranges including Mt Cook, New Zealand's highest peak. The opportunity is available (time and weather permitting) to enjoy a scenic flight (optional) over the Southern Alps before travelling to Omarama.

**Hotel** Heritage Gateway Hotel

### DAY 3: Omarama - Dunedin (B,SD)

Depart Omarama and see Lake Benmore, before following the Waitaki River to Oamaru, famous for its limestone. Continue south to Dunedin and enjoy a city sights tour followed by some free time. Tonight a Scottish evening will be presented comprising of bagpipes, great food, special Haggis Ceremony and gift.

**Hotel** Mercure Leisure Lodge

### DAY 4: Dunedin - Te Anau (B,D)

This morning travel out along the Otago Peninsula to Larnach Castle where you hear of the tragic and scandalous history on a guided tour. Enjoy time to wander around this Garden of International Significance followed by a delicious Devonshire Tea. Farewell Dunedin and travel through Balclutha and Gore to Te Anau, gateway to Fiordland and your overnight stay. Today you may like to visit the Te Anau Glow Worm Caves (optional).

**Hotel** Distinction Luxmore Hotel (Superior Room)

### DAY 5: Te Anau - Milford Sound - Queenstown (B,L)

Depart Te Anau for a fascinating drive to Milford Sound where you board your launch for a cruise on this magnificent fiord. See the spectacular Bowen Falls and towering Mitre Peak as you enjoy a picnic lunch. This afternoon travel to Queenstown, overlooking magical Lake Wakatipu. Spend the next two nights at this year round resort which offers a wide range of activities and attractions. This evening is free and you may choose to dine at one of the many fine restaurants.

**Hotel** Mercure Queenstown Resort (2 nights)

### DAY 6: Queenstown (Free Day) (B,SD)

Today is a free day for you to explore Queenstown at leisure. Your Coach Captain & Tour Guide are available to assist with the many sightseeing options available, including the thrill of a jet boat ride, a heritage tour to Skippers Canyon or get up close to a Kiwi bird. This evening board the vintage steamship TSS Earnslaw and cruise across Lake



The iconic Shotover Jet boat ride is available during your free time in Queenstown.



CLOCKWISE FROM ABOVE: Cruise through the Cook Strait on the Interislander Ferry; experience Maori culture in Rotorua; Wellington, New Zealand's capital city; the TransAlpine rail journey.



Wakatipu to Walter Peak Station. Sit back, relax and enjoy a gourmet barbecue dinner which the chef will prepare in front of you at the Colonel's Homestead. After dinner enjoy a short farm tour then reboard the TSS Earnslaw for a sing along by the piano as you cruise back to Queenstown.

#### DAY 7: Queenstown - Arrowtown - Fox Glacier (B,D)

Travel to Arrowtown and visit the Lakes District Museum. Continue via the Haast Pass to the mighty West Coast. See the snow capped peaks of the Southern Alps as you travel north to the township of Fox Glacier. Time is available (weather permitting) to experience a scenic flight (optional) over the spectacular glaciers.

**Hotel** Heartland Hotel Glacier Country or Heartland Hotel Fox Glacier

#### DAY 8: Fox Glacier - Arthur's Pass - Christchurch (B,D)

Travel to Hokitika and visit the Greenstone Factory. Continue into Arthur's Pass and board the TransAlpine, renowned as one of the great train journeys of the world. View rivers and valleys as you travel through the Waimakariri Basin, over massive viaducts and through the patchwork farmlands of the Canterbury Plains to the elegant city of Christchurch. On arrival your coach will be waiting to transfer you to your hotel.

**Hotel** Quality Hotel Elms or similar

#### DAY 9: Christchurch - Picton - Wellington (B,D)

Travel along the East Coast to the seaside village of Kaikoura. Enjoy the spectacular scenery as you travel through Marlborough Country, famous for its food and wine. Continue to Picton, where you will board the Interislander Ferry for your journey through the Marlborough Sounds and across Cook Strait to Wellington.

**Hotel** Ibis Wellington (2 nights)

#### DAY 10: Wellington (B)

A highlight this morning will be time to explore Te Papa, New Zealand's National Museum with exhibits that embrace both Maori and European views. Reboard your coach for an extensive city tour which showcases the history and culture on show. Enjoy free time this afternoon and this evening is also free to choose your own dining arrangements.

#### DAY 11: Wellington - Taupo - Rotorua (B,D)

Depart Wellington and view the snow capped peaks of Mt Ruapehu and Mt Tongariro as you travel to Lake Taupo. Visit the spectacular Huka Falls then travel along the Thermal Explorer Highway to the geothermal wonderland of Rotorua.

**Hotel** Sudima Hotel Lake Rotorua (2 nights)

#### DAY 12: Rotorua (B,SD)

Today begins with a gondola ride and breakfast at the Skyline Rotorua. There is also time for a luge ride! Next stop is Agrodome for an action packed hour of farming entertainment and education that's unlike anything you've seen before. Visit Te Puia to see the boiling mud pools and awesome geysers that Rotorua is famous for. Enjoy some free time this afternoon. This evening experience an entertaining Maori Hangi and Concert.

#### DAY 13: Rotorua - Auckland - Bay of Islands (B,D)

This morning depart Rotorua and travel north via Auckland. Continue via Whangarei to Paihia, situated in the heart of the beautiful Bay of Islands. Enjoy an introduction to the Bay of Islands, location of the signing of the treaty between the Maori tribes and the British.

**Hotel** Kingsgate Hotel Autolodge (2 nights)

#### DAY 14: Bay of Islands (B)

This morning cruise through the beautiful Bay of Islands on board a luxury catamaran to Cape Brett and the famous Hole in the Rock. Keep an eye

### >> MUST DO OPTION



#### ROTORUA CITY AND LAKES TOUR

Discover Rotorua's natural native scenery and pristine lakes onboard an Amphibious WWII Landing Craft. Your tour includes a visit to three lakes with a 'Splashdown' entry into Lake Tikitapu and Okareka.

out for bottlenose and common dolphins before returning to Paihia for a free afternoon. A range of optional activities are available or you may choose to relax and enjoy the pleasant atmosphere of the waterfront. This evening is also free and you may like to enjoy a relaxing dinner cruise (optional).

#### DAY 15: Bay of Islands - Auckland (B,D)

Depart the Bay of Islands this morning and travel via Whangarei and Dargaville to Matakoho. Enjoy a visit and informative talk at the Kauri Museum before continuing to Auckland for a city sights tour. This evening enjoy a final dinner with your new found friends.

**Hotel** Rydges Auckland

#### DAY 16: Depart Auckland (B)

Time to say goodbye. You'll be transferred to the airport for your flight home after a memorable New Zealand holiday.

>>  
GO  
SOLO

#### 16 Day SOLO Travellers Highlights Tour

Fully escorted and includes GUARANTEED single room hotel accommodation. Refer to page 40 for more details.



# 14 Day New Zealand Panorama Tour



## GUARANTEED departures

2019	2020
Sep 10, 19, 26	Jan 8, 18
Oct 7, 14, 18, 27	Feb 2, 5, 8, 12, 14, 19, 23
Nov 3, 8, 13, 18	Mar 2, 4, 7, 11, 16, 22, 24, 26
	Apr 6, 8, 14, 25
	May 2

**SEASONAL OFFER** Save £135 per person on highlighted departure dates.

## ALL INCLUSIVE tour price

Fully escorted tour includes modern coach travel, 3.5 star hotel accommodation, most meals, sightseeing & attractions.

## TOUR ONLY from

Per person, twin share	£2778
Single supplement	£843

## Stay a little longer

City	Twin share	Single
Christchurch	£65	£130
Auckland	£81	£162

Extra night rates are per person and based on room only. Subject to availability.



See magnificent views of on an optional scenic flight from Milford Sound to Queenstown.

## NO HIDDEN EXTRAS

### PRE PAID ATTRACTIONS

- Haggis Ceremony & Gift
- Larnach Castle\*
- Milford Sound Cruise & Lunch
- Cruise Lake Wakatipu on the TSS Earnslaw
- Lakes District Museum
- TranzAlpine Rail Journey
- Cruise on the Interislander Ferry
- Te Papa, NZ's National Museum
- Skyline Rotorua Gondola & Luge Ride
- Agrodome
- Thermal mud pools & geysers\*
- Traditional Maori Hangi & Concert
- City sights tour of Christchurch, Dunedin & Wellington

\*Guided tour is included with 1 guide per 24 travellers.

### TOURING

- Personalised Meet & Greet on arrival
- Return airport transfers in New Zealand
- 48 seat modern coach travel, 2 door access, restroom, reclining seats and panoramic windows
- Professional Coach Captain & Tour Guide
- 13 nights 3.5 star hotel accommodation
- 3 two night stays
- Hotel portage
- 3 cruises
- All sightseeing and pre paid attractions
- Comprehensive documentation pack

### MEALS

- 13 cooked breakfasts including a specialty breakfast: Stratosfare Restaurant, Rotorua
- 11 sumptuous dinners including 3 specialty dinners: Haggis Ceremony, Dunedin; Walter Peak Homestead, Queenstown; Maori Hangi & Concert, Rotorua
- 1 picnic lunch
- 1 delicious Devonshire Tea: Larnach Castle

Note: Dinner on Day 1 not included for anyone arriving later than 8pm.

## ITINERARY

(B) Breakfast. (L) Lunch. (D) Dinner. (SD) Specialty Dinner.

### DAY 1: Arrive Christchurch (D)

On arrival into Christchurch you will be met by a Grand Pacific Tours representative and transferred to your hotel.

**Hotel** Quality Hotel Elms or similar

### DAY 2: Christchurch - Omarama (B,D)

After an introductory city sights tour depart Christchurch and travel through the southern Canterbury Plains to Lake Tekapo. See the brilliant turquoise water, visit The Church of the Good Shepherd and view the Sheep Dog Statue. Marvel at the spectacular mountain ranges including Mt Cook, New Zealand's highest peak. The opportunity is available (time and weather permitting) to enjoy a scenic flight (optional) over the Southern Alps before travelling to Omarama.

**Hotel** Heritage Gateway Hotel

### DAY 3: Omarama - Dunedin (B,SD)

Depart Omarama and see Lake Benmore, before following the Waitaki River to Oamaru, famous for its limestone. Continue south to Dunedin and enjoy a city sights tour followed by some free time. Tonight a Scottish evening will be presented comprising of bagpipes, great food, special Haggis Ceremony and gift.

**Hotel** Mercure Leisure Lodge

### DAY 4: Dunedin - Te Anau (B,D)

This morning travel out along the Otago Peninsula to Larnach Castle where you hear of the tragic and scandalous history on a guided tour. Enjoy time to wander around this Garden of International Significance followed by a delicious Devonshire Tea. Farewell Dunedin and travel through Balclutha and Gore to Te Anau, gateway to Fiordland and your overnight stay. Today you may like to visit the Te Anau Glow Worm Caves (optional).

**Hotel** Distinction Luxmore Hotel (Superior Room)

### DAY 5: Te Anau - Milford Sound - Queenstown (B,L)

Depart Te Anau for a fascinating drive to Milford Sound where you board your launch for a cruise on this magnificent fiord. See the spectacular Bowen Falls and towering Mitre Peak as you enjoy a picnic lunch. This afternoon travel to Queenstown, overlooking magical Lake Wakatipu. Spend the next two nights at this year round resort which offers a wide range of activities and attractions. This evening is free and you may choose to dine at one of the many fine restaurants.

**Hotel** Mercure Queenstown Resort (2 nights)



CLOCKWISE FROM TOP LEFT: Enjoy a Haggis Ceremony in Dunedin; Rotorua, the geothermal wonderland of New Zealand; Skyline Rotorua offers spectacular panoramic views; cruise on the vintage steamship TSS Earnslaw to Walter Peak.



#### DAY 6: Queenstown (Free Day) (B,SD)

Today is a free day for you to explore Queenstown at leisure. Your Coach Captain & Tour Guide are available to assist with the many sightseeing options available, including the thrill of a jet boat ride, a heritage tour to Skippers Canyon or get up close to a Kiwi bird. This evening board the vintage steamship TSS Earnslaw and cruise across Lake Wakatipu to Walter Peak Station. Sit back, relax and enjoy a gourmet barbecue dinner which the chef will prepare in front of you at the Colonel's Homestead. After dinner enjoy a short farm tour then reboard the TSS Earnslaw for a sing along by the piano as you cruise back to Queenstown.

#### DAY 7: Queenstown - Arrowtown - Fox Glacier (B,D)

Travel to Arrowtown and visit the Lakes District Museum. Continue via the Haast Pass to the mighty West Coast. See the snow capped peaks of the Southern Alps as you travel north to the township of Fox Glacier. Time is available (weather permitting) to experience a scenic flight (optional) over the spectacular glaciers.

**Hotel** Heartland Hotel Glacier Country or Heartland Hotel Fox Glacier

#### DAY 8: Fox Glacier - Arthur's Pass - Christchurch (B,D)

Travel to Hokitika and visit the Greenstone Factory. Continue into Arthur's Pass and board the TranzAlpine, renowned as one of the great train journeys of the world. View rivers and valleys as you travel through the Waimakariri Basin, over massive viaducts and through the patchwork farmlands of the Canterbury Plains to the elegant city of Christchurch. On arrival your coach will be waiting to transfer you to your hotel.

**Hotel** Quality Hotel Elms or similar

#### MUST DO OPTION



#### SHOTOVER JET

Enjoy a jet boat ride in the spectacular Shotover River Canyons, carved out over the ages by a vast volume of fast flowing water. Hold on tight and take a spin in the iconic Big Red for wall to wall action from start to finish.

#### DAY 9: Christchurch - Picton - Wellington (B,D)

Travel along the East Coast to the seaside village of Kaikoura. Enjoy the spectacular scenery as you travel through Marlborough Country, famous for its food and wine. Continue to Picton, where you will board the Interislander Ferry for your journey through the Marlborough Sounds and across Cook Strait to Wellington.

**Hotel** Ibis Wellington (2 nights)

#### DAY 10: Wellington (B)

A highlight this morning will be time to explore Te Papa, New Zealand's National Museum with exhibits that embrace both Maori and European views. Reboard your coach for an extensive city tour which showcases the history and culture on show. Enjoy free time this afternoon and this evening is also free to choose your own dining arrangements.

#### DAY 11: Wellington - Taupo - Rotorua (B,D)

Depart Wellington and view the snow capped peaks of Mt Ruapehu and Mt Tongariro as you travel to Lake Taupo. Visit the spectacular Huka Falls then travel along the Thermal Explorer Highway to the geothermal wonderland of Rotorua.

**Hotel** Sudima Hotel Lake Rotorua (2 nights)

#### DAY 12: Rotorua (B,SD)

Today begins with a gondola ride and breakfast at the Skyline Rotorua. There is also time for a luge ride! Next stop is Agrodome for an action packed hour of farming entertainment and education that's unlike anything you've seen before. Visit Te Puia to see the boiling mud pools and awesome geysers that Rotorua is famous for. Enjoy some free time this afternoon. This evening experience an entertaining Maori Hangi and Concert.

#### DAY 13: Rotorua - Auckland (B,D)

Depart Rotorua and travel north to Auckland to enjoy an afternoon at leisure to discover the 'City of Sails'. This evening enjoy dinner at your hotel.

**Hotel** Rydges Auckland

#### DAY 14: Depart Auckland (B)

Time to say goodbye. You'll be transferred to the airport for your flight home after a memorable New Zealand holiday.

>>  
BEST  
VALUE

#### Bay of Islands inclusion

Stay an extra 2 nights and take in the Bay of Islands. Upgrade to the **16 Day Highlights of NZ Tour**. Refer to pages 28 - 29 for full itinerary.



# 9 Day Taste of the South Island



## GUARANTEED departures

2019	2020
Sep 10, 19, 26	Jan 8, 18
Oct 7, 14, 18, 27	Feb 2, 5, 8, 12, 14, 19, 23
Nov 3, 8, 13, 18	Mar 2, 4, 7, 11, 16, 22, 24, 26
	Apr 6, 8, 14, 25
	May 2

**SEASONAL OFFER** Save £108 per person on highlighted departure dates.

## ALL INCLUSIVE tour price

Fully escorted tour includes modern coach travel, 3.5 star hotel accommodation, most meals, sightseeing & attractions.

## TOUR ONLY from

Per person, twin share	£1999
Single supplement	£535

## Stay a little longer

City	Twin share	Single
Christchurch	£65	£130

Extra night rates are per person and based on room only. Subject to availability.



The Milford Sound cruise will be a highlight of your South Island tour.

## NO HIDDEN EXTRAS

### PRE PAID ATTRACTIONS

- Haggis Ceremony & Gift
- Larnach Castle\*
- Milford Sound Cruise & Lunch
- Cruise Lake Wakatipu on the TSS Earnslaw
- Lakes District Museum
- TransAlpine Rail Journey
- City sights tour of Christchurch & Dunedin

\*Guided tour is included with 1 guide per 24 travellers.

### TOURING

- Personalised Meet & Greet on arrival
- Return airport transfers in New Zealand
- 48 seat modern coach travel, 2 door access, restroom, reclining seats and panoramic windows
- Professional Coach Captain & Tour Guide

- 8 nights 3.5 star hotel accommodation
- 1 two night stay: Queenstown
- Hotel portage
- 2 cruises
- All sightseeing and pre paid attractions
- Comprehensive documentation pack

### MEALS

- 8 cooked breakfasts
- 7 sumptuous dinners including 2 specialty dinners: Haggis Ceremony, Dunedin; Walter Peak Homestead, Queenstown
- 1 picnic lunch
- 1 delicious Devonshire Tea: Larnach Castle

Note: Dinner on Day 1 not included for anyone arriving later than 8pm.

## ITINERARY

(B) Breakfast. (L) Lunch. (D) Dinner. (SD) Specialty Dinner.

### DAY 1: Arrive Christchurch (D)

On arrival into Christchurch you will be met by a Grand Pacific Tours representative and transferred to your hotel.

**Hotel** Quality Hotel Elms or similar

### DAY 2: Christchurch - Omarama (B,D)

After an introductory Christchurch city sights tour travel to Lake Tekapo. See the brilliant turquoise water, The Church of the Good Shepherd and the Sheep Dog Statue. The opportunity is available (time and weather permitting) to enjoy a scenic flight (optional) over the Southern Alps before travelling to Omarama.

**Hotel** Heritage Gateway Hotel

### DAY 3: Omarama - Dunedin (B,SD)

Depart Omarama and see Lake Benmore, before following the Waitaki River to Oamaru, famous for its limestone. Continue south to Dunedin and enjoy a city sights tour followed by some free time. Tonight a Scottish evening will be presented comprising of bagpipes, great food, special Haggis Ceremony and gift.

**Hotel** Mercure Leisure Lodge

### DAY 4: Dunedin - Te Anau (B,D)

This morning travel out along the Otago Peninsula to Larnach Castle for a guided tour. Enjoy time to wander around this Garden of International Significance followed by a delicious Devonshire Tea. Farewell Dunedin and travel to Te Anau, gateway to Fiordland and your overnight stay.

**Hotel** Distinction Luxmore Hotel (Superior Room)

### DAY 5: Te Anau - Milford Sound - Queenstown (B,L)

Depart Te Anau for a fascinating drive to Milford Sound where you board your launch for a cruise on this magnificent fiord. See the spectacular Bowen Falls and towering Mitre Peak as you enjoy a picnic

lunch. Travel to Queenstown, where you spend the next two nights at this year round resort. This evening is free and you may choose to dine at one of the many fine restaurants.

**Hotel** Mercure Queenstown Resort (2 nights)

### DAY 6: Queenstown (Free Day) (B,SD)

Today is a free day for you to explore Queenstown at leisure, there are many sightseeing options available. This evening board the vintage steamship TSS Earnslaw and cruise across Lake Wakatipu to Walter Peak Station. Sit back, relax and enjoy a gourmet barbecue dinner which the chef will prepare in front of you at the Colonel's Homestead.

### DAY 7: Queenstown - Arrowtown - Fox Glacier (B,D)

Travel to Arrowtown and visit the Lakes District Museum. Continue via the Haast Pass to the West Coast. At the township of Fox Glacier there is time available to experience a scenic flight (optional, weather permitting) over the spectacular glaciers.

**Hotel** Heartland Hotel Glacier Country or Heartland Hotel Fox Glacier

### DAY 8: Fox Glacier - Arthur's Pass - Christchurch (B,D)

Travel to Hokitika and visit the Greenstone Factory. Continue into Arthur's Pass and board The TransAlpine, renowned as one of the great train journeys of the world. View rivers and valleys as you travel through the Waimakariri Basin, over massive viaducts and through the patchwork farmlands of the Canterbury Plains. On arrival in Christchurch your coach will be waiting to transfer you to your hotel.

**Hotel** Quality Hotel Elms or similar

### DAY 9: Depart Christchurch (B)

Time to say goodbye. You'll be transferred to the airport for your flight home after a memorable New Zealand holiday.

# 8 Day Taste of the North Island



## GUARANTEED departures

2019	2020
Sep 18, 27	Jan 16, 26
Oct 4, 15, 22, 26	Feb 10, 13, 16, 20, 22,
Nov 4, 11, 16, 21, 26	27
	Mar 2, 10, 12, 15, 19, 24, 30
	Apr 1, 3, 14, 16, 22
	May 3, 10

**SEASONAL OFFER** Save £108 per person on highlighted departure dates.

## ALL INCLUSIVE tour price

Fully escorted tour includes modern coach travel, 3.5 star hotel accommodation, most meals, sightseeing & attractions.

## TOUR ONLY from

Per person, twin share	£1675
Single supplement	£465

## Stay a little longer

City	Twin share	Single
Wellington	£68	£135
Auckland	£81	£162

Extra night rates are per person and based on room only. Subject to availability.



Enjoy an educational farm show at Agrodome.

## NO HIDDEN EXTRAS

### PRE PAID ATTRACTIONS

- Te Papa, NZ's National Museum
- Skyline Rotorua Gondola & Luge Ride
- Agrodome
- Thermal mud pools & geysers\*
- Traditional Maori Hangi & Concert
- Dolphin / Hole in the Rock Cruise
- Kauri Museum\*
- City sights tour of Wellington & Auckland

\*Guided tour is included with 1 guide per 24 travellers.

### TOURING

- Personalised Meet & Greet on arrival
- Return airport transfers in New Zealand
- 48 seat modern coach travel, 2 door access, restroom, reclining seats and panoramic windows
- Professional Coach Captain & Tour Guide
- 7 nights 3.5 star hotel accommodation
- 3 two night stays
- Hotel portage
- 1 cruise
- All sightseeing and pre paid attractions
- Comprehensive documentation pack

### MEALS

- 7 cooked breakfasts including a specialty breakfast: Stratosfare Restaurant, Rotorua
- 5 sumptuous dinners including 1 specialty dinner: Maori Hangi & Concert, Rotorua

Note: Dinner on Day 1 not included for anyone arriving later than 8pm.

## ITINERARY

(B) Breakfast. (L) Lunch. (D) Dinner. (SD) Specialty Dinner.

### DAY 1: Arrive Wellington (D)

On arrival into Wellington you will be met by a Grand Pacific Tours representative who will transfer you to your hotel.

**Hotel** Ibis Wellington (2 nights)

### DAY 2: Wellington (B)

A highlight this morning will be time to explore Te Papa, New Zealand's National Museum with exhibits that embrace both Maori and European views. Reboard your coach for an extensive city tour which showcases the history and culture on show. Enjoy free time this afternoon and this evening is also free to choose your own dining arrangements.

### DAY 3: Wellington - Taupo - Rotorua (B,D)

Depart Wellington and view the snow capped peaks of Mt Ruapehu and Mt Tongariro as you travel to Lake Taupo. Visit the spectacular Huka Falls then travel along the Thermal Explorer Highway to the geothermal wonderland of Rotorua.

**Hotel** Sudima Hotel Lake Rotorua (2 nights)

### DAY 4: Rotorua (B,SD)

Today begins with a gondola ride and a buffet breakfast at the Skyline Rotorua, offering spectacular views. There is also time for a thrilling luge ride! Next stop is Agrodome for an action packed hour of farming entertainment and education that's unlike anything you've seen before. Visit Te Puia to see the boiling mud pools and awesome geysers that Rotorua is famous for. Enjoy some free time this afternoon. This evening experience an entertaining Maori Hangi and Concert.

### DAY 5: Rotorua - Auckland - Bay Of Islands (B,D)

Depart Rotorua and travel via Auckland. Continue to Paihia, situated in the heart of the beautiful Bay of Islands. Enjoy an introduction to the Bay of Islands, location of the signing of the treaty between the Maori tribes and the British.

**Hotel** Kingsgate Hotel Autolodge (2 nights)

### DAY 6: Bay of Islands (B)

This morning cruise through the beautiful Bay of Islands on board a luxury catamaran to Cape Brett and the famous Hole in the Rock. Keep an eye out for bottlenose and common dolphins before returning via Russell to Paihia for a free afternoon. Choose from the many optional activities available, including a tour of historic Russell, a classic sail on a tall ship or a spectacular scenic flight. This evening is also free and you may like to enjoy a relaxing dinner cruise (optional).

### DAY 7: Bay of Islands - Auckland (B,D)

Depart the Bay of Islands this morning and travel via Whangarei and Dargaville to Matakohē. Enjoy a visit and informative talk at the Kauri Museum before continuing to Auckland for a city sights tour. This evening enjoy a final dinner with your new found friends.

**Hotel** Rydges Auckland

### DAY 8: Depart Auckland (B)

Time to say goodbye. You'll be transferred to the airport for your flight home after a memorable New Zealand holiday.





**“Couldn’t have wished for more - gobsmacking scenery, wonderful friendly people, GREAT weather..! WOW!”**

**B. G. - Past traveller**



FULLY ESCORTED  
COMPLETE NZ EXPERIENCE  
ICONIC ATTRACTIONS

# Cruise & Coach Tours

## Discover New Zealand by sea and land

**G**rand Pacific Tours and Celebrity Cruises present this exclusive opportunity to discover New Zealand by Cruise and Coach. Fully escorted from start to finish, giving you the complete New Zealand experience.

### CELEBRITY SOLSTICE CRUISE + SCENIC COACH TOUR

The luxurious Celebrity Solstice offers you more than you ever imagined, from an upper deck of lush, natural grass to chic restaurants and lounges. This sophisticated cruise ship allows you to do as much or as little as you choose while providing attentive service that is second to none.

See sights and iconic locations not visited on the cruise in the comfort of a modern coach. Traverse the roads in the safe hands of your professional Coach Captain and experience a range of wonderful attractions and stay in 4 star hotel accommodation.



#### 21 DAY NZ VISTA BY CRUISE & COACH

Enjoy a 10 night cruise combined with a coach tour including the picturesque Bay of Islands.



#### 23 DAY BEST OF NZ BY CRUISE & COACH

Featuring a relaxing 12 night ocean cruise combined with modern coach travel.

#### 23 DAY BEST OF NZ BY COACH & CRUISE

Experience New Zealand by Coach and on a relaxing ocean cruise.

#### 23 DAY QLD & NZ GEMS BY CRUISE & COACH

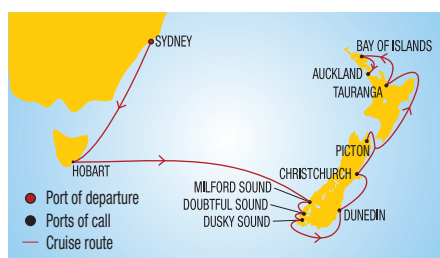
12 night cruise of the stunning Australian Coast combined with a New Zealand coach tour

► For detailed itineraries and pricing call Austravel





# 23 Day Best of New Zealand by Cruise & Coach



## GUARANTEED departures

**2019**      **2020**  
Oct 27      Feb 7#

#This departure operates in reverse. Refer to the map on page 51 for an outline of the itinerary.

## ALL INCLUSIVE tour price

Fully escorted tour includes airfares<sup>^</sup>, taxes, luxury cruise, modern coach travel, 4 star hotel accommodation, most meals, sightseeing, attractions + **BONUS US\$50 onboard credit** per stateroom on the Celebrity Solstice.

## TOUR ONLY from

Per Person, Twin Share	£5189
Single Supplement	£2432

## Stay a little longer

City	Twin share	Single
Christchurch	£73	£146

Extra night rates are per person and based on room only. Subject to availability.



An optional trip Cape Reinga is available.

## NO HIDDEN EXTRAS

### TRAVEL SERVICES

- Tour Guide
- Internal flight from Auckland to Queenstown<sup>^</sup>
- Hotel to airport transfer in Christchurch, Day 23
- Port taxes
- Comprehensive Documentation Pack

**Note:** The airfare and transfer to Sydney on Day 1 to join the cruise is not included. Please make own arrangements.

### CELEBRITY SOLSTICE CRUISE (DAY 1 - 12)

- **BONUS US\$50 onboard credit** per stateroom
- Deluxe Balcony Cabin
- Group Meet & Greet + Welcome Dinner
- World-class dining in a range of unique venues (Breakfast, lunch & dinner daily)
- Awesome entertainment
- Inspiring activities such as cooking classes and wine tasting
- Ports of call:
  - Hobart, free time to explore
  - Milford, Doubtful and Dusky Sound, Fiordland National Park
  - Dunedin, Edinburgh of the South
  - Akaroa, French inspired village
  - Picton, Marlborough Sounds Gateway
  - Tauranga, Bay of Plenty
  - Bay of Islands
  - Auckland, 'City of Sails'
- Gratuities on board

### SCENIC COACH TOUR (DAY 13 - 23)

- Modern coach travel with 2 door access, restroom, reclining seats and panoramic windows
- Professional Coach Captain
- 10 nights four star hotel accommodation
- 3 two night stays
- Hotel portage
- 10 cooked breakfasts including a specialty breakfast: Stratosfare Restaurant, Rotorua
- 8 sumptuous dinners including 2 specialty dinners: Maori Hangi & Concert, Rotorua; Farewell Dinner, Christchurch
- 1 Shire's buffet lunch: Hobbiton

### PRE PAID ATTRACTIONS

- Sky Tower
- Kauri Museum\*
- Footprints Waipoua Forest Tour\*
- Waitangi Treaty Grounds\*
- Sculpture Experience
- Hamilton Gardens\*
- Hobbiton Movie Set Tour
- Skyline Gondola & Luge Ride
- Agrodome
- Thermal mud pools & geysers\*
- Tamaki Maori Experience
- TransAlpine Rail Journey
- City sights tour of Auckland

\*Guided tour is included with 1 guide per 24 travellers.

## ITINERARY

(B) Breakfast. (L) Lunch. (D) Dinner. (SD) Specialty Dinner.  
Port arrival and departure times may vary.

### DAY 1: Arrive Sydney (D)

Arrive in Sydney where you will be met by a Grand Pacific Tours Guide aboard the Celebrity Solstice. Meet your travelling companions at dinner.

**Overnight** Celebrity Solstice  
**Port Times** Depart at 17:00

### DAY 2: Cruising (B,L,D)

Relax and enjoy the comforts of this stunning superliner. While at sea enjoy the onboard facilities, world class cuisine and the entertainment not to mention your deluxe balcony cabin.

### DAY 3: Hobart (B,L,D)

Docking in Hobart gives you immediate access to Mount Wellington and its incredibly beautiful surrounds. From there you can look out over the busy harbour, which plays host to yachts from all over the world.

**Port Times** Arrive 08:00 Depart 18:00

### DAYS 4 - 5: Cruising (B,L,D)

Cruise across the Tasman Sea to the Land of the Long White Cloud.

### DAY 6: Milford, Doubtful & Dusky Sounds (B,L,D)

Sail into the narrow fiords of Milford, Doubtful and Dusky Sounds. Your ship will seem to shrink in comparison to the towering cliffs topped by lush mountain terrain. Scenic cruising.

### DAY 7: Dunedin (B,L,D)

Situated on the magnificent Otago coastline, explore Dunedin's historic architecture and beautiful botanic gardens.

**Port Times** Arrive 09:00 Depart 19:00

### DAY 8: Akaroa (B,L,D)

Nestled in the heart of an ancient volcano, Akaroa is rich with beautiful bays and home to the rarest and smallest marine dolphin.

**Port Times** Arrive 08:00 Depart 18:00

### DAY 9: Picton (B,L,D)

Cruise through the many inlets and bays that make up the Marlborough Sounds to Picton, the gateway to the North Island. This small seaport is only a short distance from the Marlborough wine region, famous for its Sauvignon Blanc.

**Port Times** Arrive 08:00 Depart 18:00

### DAY 10: Cruising (B,L,D)

Enjoy a quiet refuge by day, gazing over the sea with a cocktail in hand.

### DAY 11: Tauranga (B,L,D)

Known as the Bay of Plenty, Tauranga is located at the entrance to one of the largest natural harbours in New Zealand.

**Port Times** Arrive 08:00 Depart 18:00

### DAY 12: Bay of Islands (B,L,D)

The beaches in this region are considered some of the world's finest with their perfect white sand and crystal clear water.

**Port Times** Arrive 08:00 Depart 19:00

### DAY 13: Arrive Auckland - City Sights Tour (B,D)

This morning arrive into the beautiful 'City of Sails', Auckland. Disembark the ship, meet your Coach Captain and enjoy an informative city tour of Auckland which includes the Auckland Domain, Parnell Rose Garden and Bastion Point. This afternoon visit Sky Tower at your leisure, one of New Zealand's most spectacular attractions.

**Hotel** Skycity Hotel

### DAY 14: Auckland - Hokianga - Bay of Islands (B,D)

Depart Auckland and travel to Matakoho to enjoy an informative talk at the Kauri Museum. After lunch travel to the unforgettable Footprints Waipoua encounter, home to some of the largest remaining kauri trees in the world. A local guide will explain how these trees are intertwined with the lives of the local Maori and the important role they play in the ecosystem that is the Waipoua Forest. Continue to Paihia, situated in the heart of the beautiful Bay of Islands

**Hotel** Scenic Hotel Bay of Islands (2 nights)

### DAY 15: Bay of Islands (Free Day) (B,D)

Today is free to choose from the many optional activities available. You may like to take a coach trip to Cape Reinga via Ninety Mile Beach, the Hole in the Rock Cruise, or a spectacular scenic flight. The choice is yours and your Tour Guide & Coach Captain will be available to assist.

### DAY 16: Bay of Islands - Auckland (B)

This morning enjoy a guided tour of the Waitangi Treaty Grounds, the location of the signing of the treaty between the Maori tribes and the British. Farewell the Bay of Islands and drive south via Whangarei and Warkworth to Matakana to visit Sculptureum, an art experience that is internationally unique. Enjoy time to wander through the Garden of Creative Diversity and to view the hundreds of displayed works in the Galleries and garden all designed to amuse and inspire. Return to Auckland where this evening is free to dine at leisure.

**Hotel** Skycity Hotel

### DAY 17: Auckland - Rotorua (B,L,D)

Travel to Waikato's most visited attraction, the Hamilton Gardens. A guided tour will take you on a journey from the peaceful Sung Dynasty Chinese Scholar's garden into an Italian Renaissance garden followed by the grandeur of the Indian Char Bagh garden. Next visit Hobbiton for lunch followed by an experience of the real Middle-earth

with a visit to the Hobbiton Movie Set. A guide will escort you through the ten acre site recounting fascinating details of how the set was created. Continue to the geothermal wonderland of Rotorua.

**Hotel** Sudima Hotel Lake Rotorua  
(Superior Room. 2 nights)

### DAY 18: Rotorua (B,SD)

Today begins with a Gondola ride to the Stratosfare Restaurant where a buffet breakfast and spectacular views are on offer. There is also time for a luge ride! Next stop is the Agrodome for an action packed hour of farming entertainment and education that's unlike anything you've seen before. Travel to Te Puia for a tour of the boiling mud pools and awesome Geysers that Rotorua is famous for. Enjoy some free time this afternoon before travelling to a Maori Village for an interactive and educational experience which culminates with a cultural performance and traditional hangi feast.

### DAY 19: Rotorua - Auckland - Queenstown (B,D)

Travel to Auckland Airport where you will board a local flight to the resort town of Queenstown, located in the South Island. Meet your South Island Coach Captain and enjoy a tour of historic Arrowtown before arriving at your hotel.

**Hotel** Millennium Queenstown (2 nights)

### DAY 20: Queenstown (Free Day) (B)

Today is a free day. There are plenty of sightseeing options and your Tour Guide and Coach Captain are available to assist. This evening is also free and you may choose to dine high above Queenstown at the Skyline Restaurant or board the vintage steamship TSS Earnslaw and cruise across Lake Wakatipu for a gourmet barbecue at Walter Peak Station (optional).

### DAY 21: Queenstown - Franz Josef (B,D)

Depart Queenstown and travel via the Haast Pass to the West Coast, an area of stunning beauty. See the snow capped peaks of the Southern Alps as you travel north to the township of Fox Glacier. Continue to Franz Josef where time is available (weather permitting) to experience a scenic flight (optional) over the spectacular glaciers.

**Hotel** Scenic Hotel Franz Josef Glacier  
(Douglas Wing)

### DAY 22: Franz Josef - Arthur's Pass - Christchurch (B,SD)

Travel to Hokitika and visit the Greenstone Factory. Continue to Arthur's Pass and board the TransAlpine, renowned as one of the great train journeys of the world. Travel through spectacular gorges, river valleys and over massive viaducts before completing your journey at Christchurch. This evening enjoy a Farewell Dinner with your new found friends.

**Hotel** Sudima Christchurch Airport Hotel

### Day 23: Depart Christchurch (B)

Time to say goodbye. You will be transferred to the airport for your flight home after a memorable New Zealand holiday.

>>  
COACH  
THEN  
CRUISE



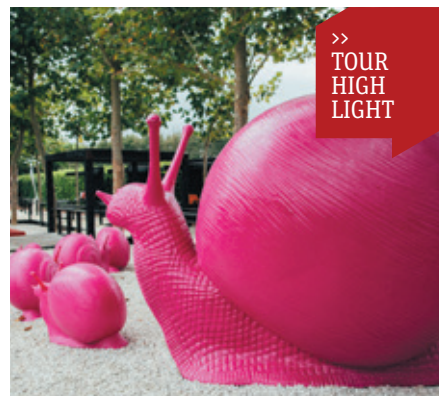
## 23 Day Best of New Zealand by Coach & Cruise

**GUARANTEED departure** 7 Feb 2020#

You may prefer to fly to Christchurch first and join your modern coach for a tour around New Zealand. Join the Celebrity Solstice in Auckland for a 12 night cruise around New Zealand heading back to Australia.



>>  
TOUR  
HIGH  
LIGHT



TOP TO BOTTOM: Sculptureum, a unique art experience; discover the traditions of Maori Culture; see awesome Geysers in Rotorua.



**“The Festive Season Tour provided the perfect opportunity to travel over the Christmas and New Year period. It has been a wonderful experience from start to finish. I would not hesitate to recommend touring with Grand Pacific Tours. Well done!”**

**R. G. - Past traveller**





INNOVATIVE HOLIDAYS  
LIKE-MINDED TRAVELLERS  
UNIQUE EXPERIENCES

# Special **Interest** Tours

Let your interests  
take you on a journey

**W**hether you are travelling solo; enjoy the thrill of aviation; are looking for a festive getaway; want a tour that complements an existing passion or perhaps inspire a new one, we've got it covered!



## SOLO TRAVELLERS TOURS

No travel partner? No worries! Designed for those who travel SOLO, but want the convenience and value of group travel. **The 16 Day itinerary visiting both islands is available.**



## FESTIVE SEASON TOURS

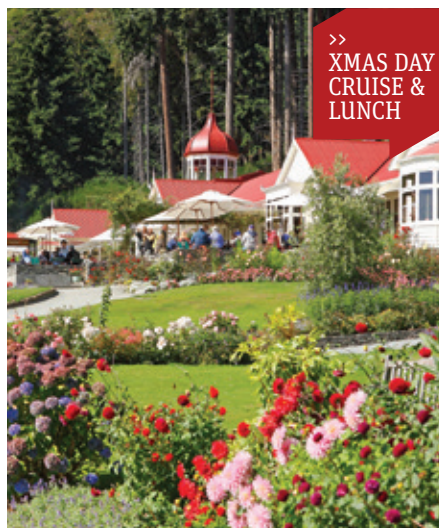
Enjoy delicious food, spend time with new friends and create unique memories. **A 17 Day itinerary visiting both islands is available, as well as an 11 Day itinerary exploring the South Island. If you prefer a little luxury and want to travel in a small group the 11 Day Ultimate Christmas Tour and the 11 Day Ultimate New Year Escape are both available.**



## WARBIRDS OVER WANAKA INTERNATIONAL AIRSHOW - EASTER 2020

NZ's biggest aviation event. Tour New Zealand and enjoy three days of incredible entertainment with a Gold Pass to this thrilling airshow. **Brochure out March 2019.**





**16 DAY  
SOLO TRAVELLERS HIGHLIGHTS**  
FROM £4145 GUARANTEED SINGLE ROOM

**GUARANTEED departures**

2019	2020
Oct 25	Feb 21
Nov 6	Mar 14

**D**esigned for those who travel solo, but want the convenience, company and value of travelling in a group. See the natural beauty and unique culture of both the North and South Islands by modern coach without breaking the budget. Enjoy two nights in exhilarating Queenstown, the 'Coolest little Capital', Wellington and cultural Rotorua. Highlights include travel on the TransAlpine Rail Journey and the Milford Sound Cruise. A Tour Guide will accompany the group to ensure the ice is broken from day one.



**17 DAY  
FESTIVE SEASON TOUR**  
FROM £3443 PER PERSON, TWIN SHARE

**GUARANTEED departure**

2019
Dec 19

**O**n this fully escorted tour, you will witness the spectacular scenery of the North and South Islands. On Christmas Day enjoy a cruise across Lake Wakatipu on the TSS Earnslaw to Walter Peak Station, for a gourmet lunch with all the trimmings. Start the year off in the North Island where you will see in the New Year in Rotorua. This tour includes two night stays in Christchurch, Queenstown, Wellington, Rotorua and the Bay of Islands. On your visit to the 'land of the long white cloud' enjoy delicious food, spend time with new friends and create unique memories.



**11 DAY  
FESTIVE SOUTH ISLAND TOUR**  
FROM £2810 PER PERSON, TWIN SHARE

**GUARANTEED departure**

2019
Dec 20

**E**njoy a fully escorted tour of the scenic South Island. On Christmas Day travel into the Fiordland National Park to Milford Sound where you will board the Milford Mariner for your amazing overnight cruise. View the fiord's spectacular waterfalls, rainforest, mountains & wildlife. Enjoy a delicious Christmas dinner with all the trimmings. This tour includes two night stays in Christchurch, Queenstown and Dunedin as well as overnight stops in the township of Franz Josef and Te Anau.

➤ For detailed itineraries and pricing call Austravel



## 11 DAY ULTIMATE CHRISTMAS TOUR FROM £3621 PER PERSON, TWIN SHARE

**GUARANTEED departure**  
2019  
Dec 19

If you'd prefer to travel in a small group, travel in style on board the Ultimate Coach, offering comfort unparalleled by any other vehicle. Escape and enjoy New Zealand's majestic South Island over the festive season. Commencing in Christchurch enjoy a two night stay, marvel at the mighty Mt Cook, travel to Dunedin situated on the magnificent Otago coastline, cruise the Milford Sound and enjoy two nights in picturesque Queenstown where you will celebrate Christmas Day with a superb dinner with all the trimmings. Visit the rugged West Coast before boarding one of the great train journeys of the world, the TranzAlpine. Maximum 20 travellers.



## 11 DAY ULTIMATE NEW YEAR ESCAPE FROM £3621 PER PERSON, TWIN SHARE

**GUARANTEED departure**  
2019  
Dec 30

Travel on an unforgettable experience and discover the sheer indulgence of New Zealand the Ultimate way. You will see in the New Year with new found friends in Wellington, enjoy stylish 4.5 star accommodation, delicious meals and experience an exciting range of iconic attractions. Visits include Larnach Castle, the Milford Sound Cruise and TranzAlpine Rail Journey. Enjoy two night stays in Wellington & Queenstown, as well as the Marlborough Country, Christchurch a city re-imagined, Te Anau, gateway to the Fiordland and Dunedin. You will be the envy of everyone on the road! Maximum 20 travellers.



## WARBIRDS OVER WANAKA INTERNATIONAL AIRSHOW

**GUARANTEED departures**  
2020  
April

New Zealand's biggest aviation event. Witness flying acts with famous military fighter aircraft from the last 100 years, through to modern jets of today. Highlights include Jet racing around pylons and the Royal New Zealand Airforce will have their Kiwi Black aerobatic team performing thrilling feats. Choose from four exciting itineraries of New Zealand which include the experience of this thrilling spectacle over Easter. Entry to this three day event includes a Gold Pass which provides access to the best seats at the Airshow in a grandstand, situated directly in front of the runway. Also included is a free souvenir pack with Gold cap and badge and Airshow programme plus much more. For those who wish to travel in style there is also the 11 Day Ultimate Small group Warbirds tour.



## Award-winning documentation

Grand Pacific Tours offer one of the most comprehensive documentation packs in the travel industry. We have won several awards from our travel agent partners who continually advise us that GPT documents are the best.



### ULTIMATE SMALL GROUP TOURS DOCUMENTATION (PAGES 6 - 17)

On all Ultimate Small Group Tours, travellers will receive the same items as listed below however, the stylish travel bag and ticket wallet (1 per person) are made of a high quality fabric providing a long lasting memento of your tour.



### ESCORTED TOURS DOCUMENTATION (PAGES 18 - 41)

On all Coach Holidays travellers receive a durable travel bag, toiletry wet pack & laundry bag, luggage tag & personal name badge. Your ticket wallet (1 per couple) includes tour itinerary & questionnaire, Optional Tours Directory, General Information & Frequently Asked Questions Directory, Touring Map, postcard, customs required resealable plastic bag and an emergency contact card.



## Travel in style! Merchandise

Make sure you look the part when you travel on a Grand Pacific Tour. Our groups look fantastic when they are all wearing their jackets and caps. Both products offer great value and will be a memento of your holiday for years to come.

### TOUR JACKET

Unisex black waterproof shell jacket with embroidered logos, silver reflective piping, fleece lined collar, hood, inside mesh lining, adjustable Velcro cuff, double front and inside pockets, hidden draw cord and mobile phone pocket. Compact, lightweight, ideal for touring. Available in sizes XS to XXXL. **Price £46**



Merchandise items must be ordered at time of booking and are not available for purchase in New Zealand



### TOUR CAP

Black wool blend cap with pre curved peak, 6 panel structure with fabric Velcro strap and embroidered logos. One size. **Price £15**



### Special offer

**Purchase both items for £57, normally £61**

# Booking Terms & Conditions

Please read these booking conditions, and the additional information on our website carefully, they form an important part of the contract for your holiday.

All holidays are advertised in our brochures and on our website are operated by Travelmood Limited trading as Austravel, registered number 1934932 (hereinafter called 'the Company', 'we', 'us' or 'our'), a member of the Travelopia Group of Companies, of Origin One, 108 High Street, Crawley, West Sussex RH10 1BD, and are sold subject to the following conditions:

## Insurance:

Please Note: Adequate and valid travel insurance is compulsory for all our travellers and it is a condition of accepting your booking that you agree you will have obtained adequate and valid travel insurance. We recommend you take out insurance as soon as your booking is confirmed.

## 1. Your Financial Protection

The Package Travel, Package Holidays and Package Tours Regulations 1992 require us to provide security for the monies that you pay for the package holidays booked from us and for your repatriation in the event of our insolvency. We will provide you with financial protection for any ATOL protected flight or flight inclusive holiday that you buy from us by way of our Air Travel Organiser's Licence number 3355, administered by the Civil Aviation Authority ('CAA'). When you buy an ATOL protected flight or flight inclusive holiday from us you will receive an ATOL Certificate. This lists what is financially protected, where you can get information on what this means for you and who to contact if things go wrong. We, or the suppliers identified on your ATOL Certificate, will provide you with the services listed on the ATOL Certificate (or a suitable alternative). In some cases, where neither we nor the supplier are able to do so for reasons of insolvency, an alternative ATOL holder may provide you with the services you have bought or a suitable alternative (at no extra cost to you). You agree to accept that in those circumstances the alternative ATOL holder will perform those obligations and you agree to pay any money outstanding to be paid by you under your contract to that alternative ATOL holder. However, you also agree that in some cases it will not be possible to appoint an alternative ATOL holder, in which case you will be entitled to make a claim under the ATOL scheme (or your credit card issuer where applicable). If we, or the suppliers identified on your ATOL Certificate, are unable to provide the services listed (or a suitable alternative, through an alternative ATOL holder or otherwise) for reasons of insolvency, the Trustees of the Air Travel Trust may make a payment to (or confer a benefit on) you under the ATOL scheme. You agree that in return for such a payment or benefit you assign absolutely to those Trustees any claim which you have or may have arising out of or relating to the non-provision of the services, including any claim against us, the travel agent (or your credit card issuer where applicable). You also agree that any such claims may be re-assigned to another body, if that other body has paid sums you have claimed under the ATOL scheme. The price of your holiday includes the amount of £2.50 per person as part of the ATOL Protection Contribution (APC) we pay to the CAA. This charge is included in our advertised prices. When you buy an ATOL protected flight or flight inclusive holiday, all money accepted from you by a travel agent acting as our agent is held by that agent on behalf of and for the benefit of the Trustees of the Air Travel Trust at all times, but subject to the agent's obligation to pay it to us for so long as we do not fail. If we do fail, any money held at that time by the agent, or subsequently accepted from you by the agent, is and continues to be held by that agent on behalf of and for the benefit of the Trustees of the Air Travel Trust without any obligation to pay that money to us. When you buy arrangements other than an ATOL protected flight or flight inclusive holiday, all money accepted from you by a travel agent acting as our agent is held by that agent on our behalf at all times. We will provide you with financial protection for any package holidays you buy from us that do not include travel by air by way of a bond held by ABTA. For further information, visit the ABTA website at [www.abta.com](http://www.abta.com). If you book arrangements other than an ATOL protected flight or a package holiday, the financial protection referred to above does not apply. We are a Member of ABTA, membership number W0656. We are obliged to maintain a high standard of service to you by ABTA's Code of Conduct.

## 2. How to Book

To make a booking you can contact us in several ways; directly over the telephone, via our website at [www.austravel.com](http://www.austravel.com), through an approved Travel Agent or by email at [traveldesigners@austravel.com](mailto:traveldesigners@austravel.com). The person making the booking (the 'lead name') must be 18 years old or over and possess the legal capacity and authority to make the booking and accepts these booking conditions on behalf of everyone in their party. Whether you book alone or as a group, we will only deal with the lead name in all subsequent correspondence, including changes, amendments and cancellations. The lead name is responsible for ensuring the accuracy of the personal details or any other information supplied in respect of yourself and any other person travelling on the booking and for passing on any information regarding the booking or any changes made in relation thereto, to all persons travelling on such booking, including but not limited to information on schedule changes or copies of booking confirmations. You will need to pay a deposit at the time of booking in the amount notified to you at the time of booking. You may also be required to pay for any non-transferable and non-refundable items such as special air fares, theatre tickets, attraction tickets or entry permits and any other applicable supplements due at the time of booking, for example, including without limitation "Accommodation Only", "Late Bookings" and "Weddings". Some airfares are booked at especially competitive rates to which airlines may attach severe restrictions. You may be asked to pay for these in full at the time of booking and they may be non-refundable in the event of cancellation. Details will be given at the time of booking. Please note that cheques require 5 working days to clear. Cheques that will not clear by the balance due date cannot be accepted. We only accept card payments from passengers travelling on the booking. We will then invoice you for the remainder of the cost due before you travel, which you must pay not

later than 69 days before departure for bookings made via an agent, or no later than 83 days before departure for bookings made directly with us. To pay your final balance, amend your booking or discuss any other aspect of your holiday booked directly with us, call our Customer Services team. When you book your holiday through an approved travel agent, all communication between you and us will be made through that agent, as such please contact your agent in the first instance, as no changes can be made to your booking unless they are done through your agent. If you book less than 69 days before departure for bookings made via an agent, or less than 83 days before departure for bookings made directly with us, full payment (less any payment which must be paid locally) must be made on booking by credit or debit card. If you do not pay the balance by the due date your booking will be cancelled and you will forfeit your deposit plus any other relevant charges. If you do not pay the local payment on the due date your booking will be cancelled (and we shall have no further liability to you) and cancellation charges will be levied as appropriate. If we accept your booking, we will issue a Booking Confirmation and Invoice. A contract will exist between us from the date we issue the Booking Confirmation and Invoice or if you book within 7 days of departure the contract will exist when we accept your deposit payment. When you receive the Booking Confirmation and Invoice and your Departure Documents please check the details carefully and inform us immediately if anything is incorrect. Names on travel documents must exactly match those in your passports. Unless we are responsible for the mistake, we will not accept liability if an airline or other supplier refuses boarding because the name(s) shown in your passport differ from those on your ticket. If there is an obvious error on the Confirmation Invoice, we reserve the right to correct it as soon as we become aware of it, but will do this within 7 days of issuing the Confirmation Invoice or, if your departure is within 7 days, no later than 24 hours before you go. If any of these changes are not acceptable then you will be entitled to a full refund. Travel documents will be sent or emailed to you (to the address given to us by the lead name at the time of booking) approximately 2 weeks before your departure, and will not be issued unless payment of the due balance has been received and any cheques have cleared. Bookings made 14 days or less before departure incur a £15 per person administration charge and tickets will not be sent out by post but will more than likely have to be collected at the airport on the day of departure. It is essential that you ascertain whether or not you can obtain relevant visas and inoculations before making your booking. We cannot accept any liability for tickets lost in the post. Departure Documents may be in paper or email form depending on your chosen holiday. If requested in the Departure Documents or locally provided holiday information, you must reconfirm the reservations, timings and check-in details of your flight with the airline concerned at least 72 hours before departure. This applies to your outward flight and to your return flight. If you miss a flight or suffer any disruption as a result of not following our instructions as to reconfirmation we will have no liability to you. For those holidays where an additional local payment is required this will be confirmed to you. A local payment is a portion of the holiday cost which must be paid directly to the local representative as instructed. If the price of your holiday includes a local payment this must be paid in the currency specified. Please note that your tour price will not be considered to have been paid in full until the local payment has been made. Tourist taxes, resort fees or similar that are charged locally may be implemented or changed without prior warning. We do not accept responsibility for these costs, which must be paid by you and are not included within our holiday price. Your personal safety is of paramount importance to us and therefore it is imperative that you advise us at the time of booking of any condition, medical or otherwise, that might affect your or other people's enjoyment of the trip. It is a condition of your booking that you and all members of your party provide certain information that may be sent to governmental authorities and border control and security agencies for the purpose of security and counter terrorism. This is known as Passenger Name Records (PNR) or Advanced Passenger Information, sometimes known as APIS. For the United Kingdom, it may be referred to as 'E-Borders'. The information you must provide will include, but not be limited to, full name – as shown in your passport or travel document, gender, date of birth, travel document type, number, country of issue and expiry date, and for travel to the U.S., your country of residence and the address for your first night's stay. You must provide this information to the airline between 6 months and 24 hours before departure. We may transfer your booking to another company within our group, but this will have no effect on your holiday arrangements.

## 3. Prices, Surcharging, and Air Passenger Duty

All guide prices we advertise are accurate at the date published, but we reserve the right to change any of those prices from time to time. Prices include a cost for fuel that was estimated at the date of this publication. Prices on our website are updated regularly. In the unlikely event of an administrative error leading to an incorrect price being displayed, we reserve the right to correct it. Offers are not combinable unless expressly stated and may be withdrawn at any time. All quotations are provisional until confirmed in writing on your Booking Confirmation and Invoice. Before you make a booking we will give you the up-to-date price of your chosen holiday including the cost of any supplements, upgrades or additional facilities which you have requested. Changes in transportation costs, including without limitation the cost of fuel, dues, taxes or fees chargeable for services such as landing taxes or embarkation or disembarkation fees at ports and airports mean that the price of your travel arrangements may change after you have booked. However, there will be no change within 30 days of your departure. Any changes in taxes, entry fees and/or charges that we collect at net cost on behalf of local and government bodies will be passed on to you in full or refunded to you in full (Net Cost Charges). We will absorb and you will not be charged for any increase equivalent to 2% of the price of your travel arrangements, which excludes insurance premiums, Net Cost Charges and any amendment charges. You will be charged for the amount over and above that, plus an administration charge of £1.00 per person together with an amount to cover agents' commission. If this means that you have to pay an increase of more than 10% of the price of your travel arrangements, you may either accept a replacement holiday from us of equivalent or similar standard and price (at the date of the change) if we are able to offer you one or you may cancel your holiday booking and receive a full refund, except for any amendment charges. Should you decide to cancel for this reason, you must exercise your right to do so within 14 days from the issue date printed on your final invoice. If any change in our costs would cause a reduction in your holiday price, we will not make refunds of amounts less than 2% of the price of your travel arrangements, which excludes insurance premiums, Net Cost Charges and any amendment charges, but we will refund in full amounts exceeding such 2%, after deducting an administration charge of £1.00 per person. However, please note that travel

arrangements are not always purchased in local currency and some apparent changes have no impact on the price of your travel due to contractual and other protection in place. In all cases, we will only consider an appropriate refund of insurance premiums paid if you can show that you are unable to transfer or reuse your policy. Dates and itineraries shown for tours are indicative only and subject to change. Air Passenger Duty "APD", which is payable by all passengers departing from UK airports, is included in the price of your holiday/flight ticket. Children under 12 on the date of travel (under 16 from March 2016) are exempt from APD when travelling in economy class. The price of your holiday will include APD for an economy seat. If you upgrade to a premium cabin this will be included in the upgrade cost. In view of the current volatility of world oil prices, a fuel supplement may be added to the price of your holiday at the time of booking.

## 4. Insurance

Adequate and valid travel insurance for your chosen itinerary is compulsory for all travellers and it is a condition of accepting your booking that you agree you will have obtained adequate and valid travel insurance. We recommend you take out insurance as soon as your booking is confirmed. You are strongly advised to insure yourself against any possible risk that may occur and in particular to ensure that you have sufficient insurance in respect of dependent relatives and force majeure events. You are required to carry proof of insurance with you and produce it if reasonably requested by Company employees or suppliers. You must ensure that there are no exclusion clauses which limit cover for the type of activities included, or the altitudes attained, in your holiday. Furthermore, you must advise us of the details of your own insurance including the name of the insurer and the policy number as soon as possible. Our representative abroad has the right to see the policy so that appropriate advice and assistance can be given. Clients in breach of this condition will be deemed to have indemnified the Company for any loss incurred by the Company as a result of such breach and such costs will be redeemable from them.

## 5. If You Change or Cancel Your Holiday

5.1 If, after our Booking Confirmation has been issued, you (i) make a change to your existing booking, we will charge an amendment fee of £35 per change (ii) or wish to change to another holiday or change departure date, we will try to make the changes subject to availability, provided that notification is received in writing at our offices from the lead name at least 69 days before departure for bookings made via an agent, or at least 83 days before departure for bookings made directly with us and you pay £35 per person to cover our administration costs.

5.2 In addition to the fee we charge, any alteration, whether a change to an existing booking or a change to another holiday or departure date, will also be subject to payment by you of any costs imposed by any of the suppliers providing the component parts of the booking. If the holiday to which you transfer is more expensive than the one you originally booked, a further deposit will also be payable. Any alteration by you within 69 days of departure for bookings made via an agent, or within 83 days of departure for bookings made directly with us will be treated as a cancellation of the original booking and will be subject to cancellation charges.

5.3 Subject to section 5.4, where you are unable to travel you can transfer your booking to another person, providing the following conditions are met: a) you must notify us in writing at least 69 days before departure for bookings made via an agent, or at least 83 days before departure for bookings made directly with us and give us authority to make the transfer; and b) your request is accompanied by all original travel documents which you have received and the full name and address of the person to whom you wish to transfer your holiday booking ("transferee"); and c) the transferee is acceptable to us, accepts the transfer and these Booking Conditions and fulfils any conditions that apply to the booking; and d) payment is made by you of an administrative charge of a minimum of £35 per person plus payment of all costs charged or levied by those supplying your travel arrangements. Both the transferor and transferee will be jointly and severally liable for payment of the holiday price and other associated expenses.

5.4 Some airline carriers and other transport providers treat name and departure detail changes, such as date and time changes, as a cancellation. If you miss a portion of your flight journey, some airline carriers and other transport providers treat this as a cancellation and may cancel the rest of your flights. It is your responsibility to check with the relevant airline to ensure the subsequent journeys have not been cancelled, as if this does happen, you may be charged again for the missed flight and any subsequent journeys. Accordingly you may have to pay for the cancelled ticket and be required to pay for the full cost of a new ticket. Once airline tickets have been issued, all changes are likely to incur the cost of a new ticket.

5.5 When the price per person is dependent on the number of people in the accommodation and the number of people changes, the price will be recalculated based on the new party size. Any increase in price payable is not a cancellation charge. A separate cancellation charge will be levied in respect of bookings cancelled. A new confirmation invoice will be issued as appropriate on which the cancellation charge will be shown.

5.6 You, or any member of your party, may cancel your booking at any time providing that the cancellation is made by the lead name in writing. Notice of cancellation will be effective upon receipt by us of your written communication. As we start to incur costs from the time the contract is confirmed we will retain your deposit and in addition will apply other cancellation charges as shown below. These charges are based on how many days before your booked departure we received your cancellation notice. These charges are a percentage of the total cost of your booking, not including your insurance premium. If you want to cancel one or more passengers on the booking you will have to pay a proportion of the applicable cancellation charge based on the number of passengers you wish to cancel from the booking:

\* Cancellation charge as a % of total holiday Period before departure when written cost (excluding any insurance premiums and notice of cancellation is received by us any amendment fees already paid to us)  
Bookings made via Agent Direct Bookings More than 69 days More than 83 days Loss of deposit 56-69 days (inclusive) 56-83 days (inclusive) 30% 36-55 days (inclusive) 36-55 days (inclusive) 50% 22-35 days (inclusive) 22-35 days (inclusive) 70% 11-21 days (inclusive) 11-21 days (inclusive) 90% 0-10 days (inclusive) 0-10 days (inclusive) 100%

\* Please note that for certain travel arrangements e.g. many scheduled transport providers, the cancellation charge may be higher than those shown. In certain cases a 100% cancellation fee applies as soon as the booking is made and the ticket is issued. Please ask for full details of cancellation charges at time of booking. We strongly recommend you to take out insurance that includes cover against irrecoverable cancellation costs. Additionally, you will remain responsible



for the full amount of your insurance premium and this will not be refunded in the event of your cancellation. You may however be able to transfer this cover to another holiday. If you are travelling on a scheduled flight, we cannot give you any refund until we have received your old travel documents, including tickets.

5.7 All communications relating to this contract (in particular any requests to cancel or amend your holiday arrangements) must be from the Lead Name in writing and in English and delivered by hand or email customer.services@austravel.com. (please call also to ensure your email has been received) or sent by recorded delivery post to Travelmood Limited, The Atrium, London Road, Crawley, West Sussex, RH10 9SR.

#### 6. If We Change or Cancel Your Holiday

We reserve the right to cancel your booking or change any of the facilities, services or prices described in our brochures or website. We will endeavour to advise you of any changes known at the time of booking. We plan the arrangements for your holiday many months in advance and may occasionally have to cancel your holiday or make changes, most of which are minor. Flight timings and carriers shown in the brochure are for guidance only and are subject to change. Your Booking Confirmation will show the latest planned timings. Your actual flight timings will be shown on your ticket (including any e-ticket itinerary) which you should check carefully as soon as you receive it. A change of carrier or type of aircraft will not be considered a major change. If a major change becomes necessary, we will advise you of the change as soon as reasonably possible. Whether a change is 'major' depends on the nature of the holiday and may include: a significant change of destination, a change in accommodation to that of a lower category; a change in time of your scheduled departure or return flight by more than 12 hours (but not a flight delay); or a change of UK departure airport (excluding changes between London airports, London, Ebbsfleet and Ashford stations and between Dover/Folkestone ports). A delay to your flight that we need to make within 24 hours before you are due to depart will not be considered a major change unless the change is for more than 24 hours. These changes are only examples and there may be other significant changes which constitute major changes. When a major change occurs, you will have the choice of either:

- accepting the change, or
- accepting a replacement holiday from us of equivalent or similar standard and price (at the date of the change), if we are able to offer you one, or
- cancelling your holiday, in which case you shall receive a full refund of all monies paid. We may also have to cancel your travel arrangements. Operation of some holidays are dependent on a minimum number of persons booking the holiday. If that number is not achieved, we reserve the right to cancel the holiday. However we will not cancel your booking less than 4 weeks before the scheduled departure date except for reasons of force majeure (as defined below), or failure on your part to pay the deposit and/or final balance, or any other reason beyond our control. If we are forced to cancel your holiday after departure we will, wherever possible, make suitable alternative arrangements. If we are unable to make such alternative arrangements, or you reject these for good reason then we will return you to your point of departure and refund you for any unused services, if appropriate. Where we make a major change to or cancel your holiday, except where a major change or cancellation arises from circumstances amounting to force majeure, consolidation due to minimum numbers not being attained, flight schedule changes, third party resort development, failure on your part to pay the deposit and/or final balance or for any other reason beyond our control, we will pay you, as a minimum, compensation as detailed below. Any compensation payable will be on these scales, based on how many days before your booked holiday departure we tell you of a major change:

Period before departure when we notify Compensation you of a major change payable per person\* Before balance due date Nil Between balance due date and 29 days (inclusive) before departure £10.00 Between 28 and 15 days (inclusive) before departure £20.00 Between 14 and 8 days (inclusive) before departure £30.00 7 days or less before departure £40.00

This standard compensation payment will not affect your statutory or other legal rights. \*We will only make one compensation payment for each full-fare-paying adult in the holiday booking. Any children not paying the full adult fare will receive compensation on a pro rata basis of the adult fare. Children using a free child place will not receive any standard compensation payment. We strongly recommend that you make no travel arrangements to your point of departure, make any connecting travel that is non-refundable or non-changeable or incurs penalties or incur any costs in respect of visas or vaccinations until such time as your travel itinerary has been confirmed on your Departure Documents. If you make such arrangements, which you are then unable to use due to a change in your itinerary, we shall not be liable to you for the cost of those arrangements. Circumstances amounting to "force majeure" include any event which we or the supplier of the service(s) in question could not even with all due care, foresee or forestall such as (by way of example and not by way of limitation) war, threat of war, riots, civil disturbances, industrial disputes, actual or threatened terrorist activity and its consequences, natural or nuclear disasters, fire, acts of God, unavoidable and unforeseeable technical problems with transport for reasons beyond our control or that of our suppliers, closed or congested airports or ports, hurricanes and other actual or potential adverse weather conditions, flood, epidemics, health risks or pandemics illness and any other similar events. In the unlikely event that there are any changes made to other holiday arrangements, we will try to tell you before you go, although we are not obliged to do so, nor are we obliged to compensate you. If your booking for other holiday arrangements are cancelled we will do our utmost to ensure you receive a full and prompt refund of the price of these arrangements. Tour, Safari and Excursions: Some are dependent on minimum numbers, others will operate with one booking. In the case of insufficient demand we reserve the right to consolidate or cancel. If this is required you will be offered a full refund. We will not make any such changes within 69 days (for agent bookings) and 83 days (for direct bookings) of departure. We reserve the right to make changes such as dates, itineraries (those shown are indicative only, are subject to change and may be affected by local conditions), accommodation, cruise ship, boat. Changes to that of a similar standard will not be considered a major change. Should there be a discrepancy between the itinerary or additional information in the brochure or website and the Departure Documents, the latter information will be considered the most up-to-date and accurate.

#### 7. Our Liability, Conditions of Carriage and Limitations

Our obligations, and those of our suppliers providing any service or facility included in your holiday, are to take reasonable skill and care to arrange for the provision of such services and facilities. You must show that reasonable skill and care has not been used if you wish to make any claim. Standards of, for example, safety, hygiene and quality vary throughout the transport and destinations that your holiday may involve. Sometimes these standards will be lower than those which would be expected in the UK. The suppliers of the services and facilities included in your holiday should comply with local standards where they are provided. Our liability, except in cases involving death, injury or illness, shall be limited to a maximum of 3 times the cost of your travel arrangements. Our liability in all cases will be limited in accordance with and/or in an identical manner to the contractual terms of the companies that provide the transportation for your travel arrangements. These terms are incorporated into this contract; and any relevant international convention as detailed below. We are to be regarded as having all benefit of any limitation of compensation contained in these or any conventions. You can ask for copies of the transport companies' contractual terms, or the international conventions, from our offices at Travelmood Limited, Legal Department, Origin One, 108 High Street, Crawley, West Sussex RH10 1BD. We shall have no liability where the cause of the failure to provide, or failure in, your holiday or any death or personal injury you may suffer is not due to any fault on our part or that of our agents or suppliers, because it is either attributable to you, or attributable to someone unconnected with your holiday and is unforeseeable or unavoidable, or is attributable to our employees, agents, subcontractors and suppliers and their staff whilst acting outside the scope of their employment, or is due to information, however obtained, from outside sources such as independent third party websites, or is due to unusual or unforeseeable circumstances beyond our control, the consequences of which could not have been avoided even if all due care had been exercised, or an event which neither we, nor our agents or suppliers could have foreseen or forestalled, or related to any consequential loss not directly connected to the contract with us. If any international convention applies to, or governs, any of the services or facilities included in your holiday arranged or provided by us, or provided by any of our suppliers, and you make a claim against us of any nature arising out of death, injury, loss or damage suffered during or as a result of the provision of those services or facilities, our liability to pay you compensation and/or the amount (if any) of compensation payable to you by us will be limited in accordance with and/or in an identical manner to that provided for by the international convention concerned (in each case including in respect of the conditions of liability, the time for bringing any claim and the type and amount of any damages that can be awarded). International Conventions which may apply include, without limitation: in respect of international air travel, the Warsaw Convention 1929 (as amended) or the Montreal Convention 1999; in respect of rail travel, the Berne Convention 1961; in respect of carriage by sea, the Athens Convention 1974; in respect of carriage by road, the Geneva Convention 1973; and, in respect of hotels, the Paris Convention 1962. For the avoidance of doubt, this means that we are to be regarded as having all benefit of any limitations of compensation contained in any of these Conventions or any other international conventions applicable to your holiday. Other than as set out above, and as is detailed elsewhere in these booking conditions, we shall have no legal liability whatsoever to you for any loss or damage. Under EU law, European Community Regulation (EC) No. 261/2004, you have rights in some circumstances to refunds and/or compensation from your airline in cases of denied boarding, cancellation or delay to flights. Full details of these rights will be published at EU airports and will also be available from airlines. However, you should note that reimbursement of the cost of a flight that forms part of your holiday is the responsibility of your holiday airline and will not automatically entitle you to reimbursement of the cost of your travel arrangement from us. Your right to a refund and/or compensation from us is set out in these Booking Conditions. If any payments to you are due from us, any payment made to you by the airline will be deducted from this amount. If your airline does not comply with these rules you should complain to the Aviation Consumer Advocacy Panel on 020 7240 6061 or at [www.caa.co.uk](http://www.caa.co.uk). If you purchase any optional activities that are not part of your pre-booked itinerary, the contract for the provision of that activity will be between you and the activity provider. The decision to partake in any such activity is entirely at your own discretion and risk. If you do have any complaint about, or problem with, any optional activity purchased in resort your claim should be directed to the activity provider and not to us. However, should you or any member of your party by misadventure suffer illness, injury or death during the period of your holiday from an activity which does not form part of the arrangements made by us or an excursion purchased through us, we shall, where appropriate and subject to our absolute discretion, try to help if we can. We may help everyone on your booking up to a total cost of £5,000, as long as the following conditions are met:

- (i) you must ask us for such assistance within 90 days of the misadventure;
- (ii) You must make a claim under your insurance policy's legal expenses or other appropriate section. You must show us proof that your insurance company has received your claim; and
- (iii) in the event of there being a successful claim for costs against a third party or a suitable insurance policy or policies being in force, you must repay us the costs actually incurred by us in giving this assistance. We may operate holidays in regions where standards of accommodation, transport, safety, hygiene, medical facilities and other infrastructure may, at times, be lower than those you normally expect. The outline itineraries given for each holiday must be taken as an indication of what should be accomplished, and not as a contractual obligation on our part. Changes in itinerary may be caused by local political conditions, flight cancellations, mechanical breakdown, weather, border restrictions, sickness, or other unforeseeable circumstances. Pro rata refunds will be given for services not utilised wherever possible. Please note that the timings of air, sea, road or rail departures are estimates only. These timings may be affected by operational difficulties, weather conditions or failure of passengers to check in on time. Orient Express Bookings In making any bookings for any rail travel (including but not limited to travel by the Orient Express) then your contract also incorporates the train owner / carriers (collectively, the "Carrier") terms and conditions (the "Passenger Conditions of carriage") which shall govern the relationship, responsibilities and liabilities as between you, the passenger, and the Carrier. A copy of the Passenger Conditions of Carriage can be provided on request. By making your booking and accepting these terms you also agree to these Passenger Conditions of Carriage and accept the conditions therein, you agree that any dispute or claim that you raise with us will be subject to this Agreement and not the Passenger Conditions of Carriage and to the extent there is a conflict between this Agreement and the provisions of the Passenger

Conditions of Carriage as they relate to you and us, this Agreement shall prevail and supersede the provisions of the Passenger Conditions of Carriage.

#### 8. Air Carrier Liability for Passengers and their Baggage

Flight notice, flight information and EU blacklist. This is a notice required by European Community Regulation (EC) No. 889/2002. This notice cannot be used as a basis for a claim for compensation, nor to interpret the provisions of European Community legislation or the Montreal Convention, and it does not form part of the contract between the air carrier(s), us and you. No representation is made by the air carrier(s) or us as to the accuracy of the contents of this notice. This information notice summarises the liability rules applied by European Community air carriers as required by European Community legislation and the Montreal Convention. Compensation in the case of death or injury. There are no financial limits to the liability for passenger injury or death. For damages up to approximately 113,100 Special Drawing Rights ("SDRs") the air carrier cannot contest claims for compensation. Above that amount, the air carrier can defend itself against a claim by proving that it was not negligent or otherwise at fault. Advance payments. If a passenger is killed or injured, the air carrier must make an advanced payment, to cover immediate economic needs, within 15 days from the identification of the person entitled to compensation. In the event of death, this advance payment shall not be less than 16,000 SDRs. Passenger delays. In case of passenger delay, the air carrier is liable for damage unless it took all reasonable measures to avoid the damage or it was impossible to take such measures. The liability for passenger delay is limited to 4,694 SDRs. Baggage delays. In case of baggage delay, the air carrier is liable for damage unless it took all reasonable measures to avoid the damage or it was impossible to take such measures. The liability for baggage delay is limited to 1,131 SDRs. Destruction, loss or damage to baggage. The air carrier is liable for destruction, loss or damage to baggage up to 1,131 SDRs. In the case of checked baggage, it is liable even if not at fault, unless the baggage was defective. In the case of unchecked baggage, the carrier is liable only if at fault. Higher limits for baggage. A passenger can benefit from a higher liability limit by making a special declaration at the latest at check-in and by paying a supplementary fee. Complaints on baggage. If the baggage is damaged, delayed, lost or destroyed, the passenger must write and complain to the air carrier as soon as possible. In the case of damage to checked baggage, the passenger must write and complain within seven days, and in the case of delay within 21 days, in both cases from the date on which the baggage was placed at the passenger's disposal. Liability of contracting and actual carriers. If the air carrier actually performing the flight is not the same as the contracting air carrier, the passenger has the right to address a complaint or to make a claim for damages against either. If the name or code of an air carrier is indicated on the ticket, that air carrier is the contracting air carrier. Time limit for action. Any action in court to claim damages must be brought within two years from the date of arrival of the aircraft, or from the date on which the aircraft ought to have arrived. Basis for the information. The basis for the rules described above is the Montreal Convention of 28 May 1999, which is implemented in the European Community by European Community Regulation (EC) No. 2027/97 (as amended by European Community Regulation (EC) No. 889/2002) and national legislation of the Member States. In accordance with European Community Regulation (EC) No. 2111/2005, Article 9, we are required to bring to your attention the existence of a 'Community list' which contains details of air carriers that are subject to an operating ban within the European Community. The Community list is available for inspection at [www.air-ban.europa.eu](http://www.air-ban.europa.eu). In accordance with European Community Regulation (EC) No. 2111/2005 we are required to advise you of the actual carrier operating your flight/connecting flight/transfer if your booking includes flight(s). We do this by listing carriers to be used or likely to be used on the Flights information section of our FAQs at [www.austravel.com](http://www.austravel.com). The airline may use wide and narrow-body jets. Any changes to the actual airline after you have received your tickets will be notified to you as soon as possible and in all cases at check-in or at the boarding gate. Such a change is deemed to be a minor change. Other examples of minor changes include alteration of your outward/ return flights by less than 12 hours, changes to aircraft type, change of accommodation to another of the same standard. Some flights may need to stop en route. If we know about this in advance we will tell you. Flight times shown in the brochure, on the website and on your booking confirmation are not guaranteed. Actual flight times are shown on your tickets. Flight times are local times based on the 24-hr system. Please check with the airline regarding luggage allowance limits and the maximum allowable single item baggage weight. If you have a medical condition, serious illness, recently undergone surgery, or have suffered a recent accident, you must advise us and your airline and you may need to be cleared for travel by the airline which will involve obtaining a Fitness to Fly Certificate from your GP.

#### 9. Complaints

If you have a complaint about your holiday whilst away, you must immediately notify our Service Representative and the relevant supplier of the service and contact us in the UK if further action is required by us. If you are not happy with their action taken in response please follow this up within 35 days of your return from holiday by writing to our Customer Relations Department at Travelmood Limited, The Atrium, London Road, Crawley, West Sussex, RH10 9SR or emailing us at [customer.relations@austravel.com](mailto:customer.relations@austravel.com), giving your booking reference and all relevant information. We will acknowledge your written notification within 7 days and aim to provide a full response within 28 days. We can also offer you ABTA's scheme for the resolution of disputes, which is approved by the Chartered Trading Standards Institute. If we can't resolve your complaint, go to [www.abta.com](http://www.abta.com) to use ABTA's simple procedure. Further information on the Code and ABTA's assistance in resolving disputes can be found on [www.abta.com](http://www.abta.com). You can also access the European Commission Online Dispute (ODR) Resolution platform at <http://ec.europa.eu/consumers/odr/>. This ODR platform is a means of registering your complaint with us; it will not determine how your complaint should be resolved. If you prefer, you can take your complaint to the County Court or another suitable court. Information regarding complaints may be shared with other tour operators.

#### 10. Behaviour

On tours, safaris and excursions provided by us, it is necessary that you abide by the authority of the leader, who represents the Company. If you commit any illegal act when on the holiday or if in our reasonable opinion or the reasonable opinion of the Company representative or another person in authority your behaviour is disruptive, threatening or abusive, causes unnecessary inconvenience or is causing or likely to cause danger, damage, distress or upset, disturbance or annoyance to others or others' property, or puts any other traveler or our staff or

agents in the UK or in resort in any risk or danger, on the telephone, in writing or in person, we may terminate your travel arrangements without any liability on our part. If the Captain of your flight or ferry or any of our overseas staff or agents believes that you could be disruptive or that you are suffering from a contagious disease, they can also refuse to let you proceed with your travel arrangements, restrict your movements on board, disembark from the ferry or aircraft, or remove you from your accommodation or excursion. If this means you are not allowed to board the flight outbound from the UK, we will treat your booking as cancelled by you from that moment, and you will have to pay full cancellation charges. If this occurs overseas then you will become responsible for your own return home and any other members of your group who cannot or will not travel without you. In any of these circumstances no refunds or compensation will be paid to you and we will not be liable for any costs or expenses you incur. If you are refused carriage because of your behaviour, or you are under the influence of alcohol or drugs, your airline may pass on your details and date of refusal of carriage to other airlines for their information. This in turn may make it difficult for you to book other airline tickets. In any of these circumstances no refunds or compensation will be paid to you and we may make a claim against you for any damages, costs and expenses (including legal expenses) incurred as a result of your behaviour including but not limited to (i) repairing or replacing property lost, damaged or destroyed by you, (ii) compensating any passenger, crew, staff or agent affected by your actions and (iii) the cost of diverting the aircraft or ferry to remove you. Criminal proceedings may also be instigated. If you are affected by any condition, medical or otherwise, that might affect your or other people's enjoyment of the holiday, you must advise us of this at the time of booking. The accommodation we arrange for you must only be used by those people named on your Booking Confirmation or Departure Documents. You are not allowed to share the accommodation or let anyone else stay there. You are responsible for the cost of any damage caused to your accommodation or its contents during your stay. These charges must be met by you and may have to be paid locally. We expressly reserve the right to prevent you from participating in the excursions we provide, whether pre-booked or purchased in resort, if in the reasonable opinion of our staff or those of the excursion provider, you are either unsuited to undertake the excursion, or if you appear to be under the influence of drugs or alcohol. In these circumstances your sole remedy against us will be to obtain a refund of the cost of that excursion. For the purpose of this section, reference to "you" or "your" includes any person in your party.

#### 11. Visa, Health, Passport, Travel Documentation

It is essential that you ascertain whether or not you can obtain relevant visas and inoculations before making your booking, particularly for late bookings. Whilst we are able to provide basic advice to clients regarding passports and visa requirements, you should check with the appropriate embassy, consulate or the British Foreign Office for the exact requirements for your chosen holiday and date of travel. It is your responsibility to ensure that you have the correct passport and visas to gain access to any country/region included in the travel arrangements which you purchase from us. If you fail to do so, we have no liability to you for any cost, loss or damage which you suffer, nor will we refund you the cost of any unused portion of your travel arrangements. In some cases, countries will refuse entry to clients who have criminal records. Should you be concerned about this, please check with the embassy or consulate of the countries to which you are travelling. The lead name is entirely responsible for ensuring that all members of the group have the correct and valid documentation for travel. We cannot accept responsibility for any failure to comply resulting in any costs or fines being incurred and we advise you to check with your passport office or the consulate in question if you have any queries. Clients travelling overland to certain destinations may need to also pass through controls of other countries en-route so this should be allowed for with any passport/visa applications. When travelling to the US you must have the correct passport to travel on the Visa Waiver Programme or have obtained the correct visa, valid for your stay. Each person wishing to visit the US must have either: i) an e-passport (if your passport is issued after 26 October 2006), or a machine readable passport (containing a digital photograph) if your passport is issued after the 26 October 2005 and a Visa Waiver Form or ii) a valid passport and a valid visa which must be obtained before travel from the US authorities. The US authorities require passengers travelling under the Visa Waiver Programme to register for electronic travel authority on the Electronic System for Travel Authorisation (ESTA). If you have not applied for and received travel authorisation via ESTA prior to travel you may be denied boarding, experience delayed processing, or be denied admission at the U.S. port of entry. However, neither possession of a visa nor meeting the basic requirements for travelling visa-free on the Visa Waiver Programme guarantees admission to the US. As with most countries, the final decision is made by immigration officials at the port of entry. You can apply online by completing the application form at <https://esta.cbp.dhs.gov> and paying a fee. If you are refused boarding or denied admission at the U.S. port of entry, you will still be subject to our cancellation charges in accordance with the terms of our contract with you. For additional specifics about the Visa Waiver Programme please consult the Visa Waiver Programme information on the U.S. Embassy London website [www.usembassy.org.uk](http://www.usembassy.org.uk). We recommend that you carry your ESTA approval with you when you travel and recommend you register at least 72 hours before departure. Please Note: when you register for ESTA you must have a valid passport at the time of registration and, for any travel to the USA, your passport must be an e-Passport that contains the microchip and the e-passport symbol. If you have applied for a post dated passport (for example to reflect a change in name) this passport will not be valid until the effective date noted in the passport. Children and minors wanting to travel with a Visa Waiver Form must hold their own machine readable passport or e-passport. Please note that the nationals of some countries can only travel to the US if they have a valid visa as they are not eligible for the Visa Waiver Programme. There is a \$14 fee per person charge which is payable by credit or debit card when applying. As announced by the U.S. Customs and Border Protection, this fee will recover the costs incurred by the U.S. Customs and Border Protection of providing and administering the ESTA system and is in addition to the mandatory \$10 travel promotion fee established by the Travel Promotion Act of 2009. This is subject to change. When travelling to Canada you must check with your foreign office and the Canadian authorities that you have the correct passport and comply with the visa requirements. Under Canada's eTA program, citizens from countries other than the United States, who do not need a visa to enter Canada, will need to obtain an online authorisation before flying to Canada, unless otherwise exempted. The earlier travellers get their eTA, the sooner they will benefit from knowing they have been pre-screened to enter Canada. A fee of \$7 is payable for processing an application for an electronic travel authorisation. An application

for an electronic travel authorisation must be made by means of an electronic system that is made available by the Department (Citizenship and Immigration Canada) for that purpose. An electronic travel authorisation is valid for a period of five years from the day on which it is issued to the applicant or until the earliest of the following days, if they occur before the end of that period: (a) the day on which the applicant's passport or other travel document expires, (b) the day on which the electronic travel authorisation is cancelled, or (c) the day on which a new electronic travel authorisation is issued to the applicant. Please note that for some trips we need to request special permits, and as such we will require your passport details prior to accepting your booking. Furthermore, if you renew your passport after you have booked, you may be required to take your old passport with you to maintain the validity of the permit. We are able to advise on mandatory health requirements; however, we are not medical experts. It is your responsibility to ensure that you obtain proper and detailed medical advice at least two months prior to travel for the latest health requirements, recommendations for your destination and any costs. You should check this information at least 2 months before departure and again within 14 days of travel. Where you do not do so and either are not allowed to enter any country, or suffer personal injury or death as a result, we have no liability to you for any cost, loss or damage which you suffer nor will we refund you the cost of any unused portion of your travel arrangements. Clients with existing medical problems, pregnant women and anyone who has recently visited other countries should check requirements with their general practitioner. When assessing whether holidays will operate we use information from our local offices in conjunction with advice from the British Foreign Office and other relevant government bodies. It is your responsibility to acquaint yourself with the travel advice provided by these government bodies. For more information, please visit our Travel Aware page and government websites at [www.gov.uk/travelaware](http://www.gov.uk/travelaware) and [www.gov.uk/foreign-travel-advice](http://www.gov.uk/foreign-travel-advice) for your destination country.

#### 12. Privacy Policy

Travelmood Limited is part of the Travelopia group of companies (<https://www.travelopia.com/>). Here at Austravel, we understand the concerns about how data may be stored, sent and used by companies. We are committed to complying with all data protection laws and want you to feel confident in the measures we are taking to uphold your data privacy rights. This quick guide provides a brief summary of our data practices but you can always find out more detailed information in our full privacy policy. WHAT INFORMATION MIGHT WE COLLECT FROM YOU? The information we collect depends upon how you are interacting with us. For example, if you're making a booking with us, we are likely to ask for more information than if you're only requesting a brochure. Depending upon the circumstances, we might need to collect the following information from you: personal details such as name, address, e-mail address, date of birth, telephone number, payment details, details of identification documents, health details and travel preferences. For more details, please see our full privacy policy. Where we need to collect personal data by law or under the terms of a contract we have with you and you fail to provide that data when requested, we might not be able to provide you with your booking. WHEN DO WE SHARE YOUR PERSONAL DATA? In order to provide you with your booking you have requested (such as holidays, flights or tickets to a sports event) we may need to share your personal information with third parties such as airlines, tour operators, transport companies, excursion providers, airport authorities, insurance companies, car hire companies, ground handling agencies, cruise companies, airlines, hotels, airports and other suppliers we work with in connection with your business. We do not pass your information to other parties for marketing purposes unless you agree to us doing so. WHAT ARE OUR MARKETING PRACTICES? We would like to keep you up to date with latest offers, partnerships, sales, promotions, competitions from Austravel or those of other Travelopia companies providing similar products. However, we will only do so if you have signed up to receive these marketing communications from us or made a booking and you have not told us that you do not want to hear from us. You can opt-out of marketing at any time by clicking on the 'unsubscribe' link included in all of our e-mails or by contacting us. WHAT PERSONAL DATA RIGHTS DO YOU HAVE? You have a range of legal rights over your data. You can find out more in our full privacy policy. HOW CAN CONTACT US ABOUT YOUR DATA PRIVACY? We have appointed a data protection officer (DPO)/data privacy manager who can assist with queries you have in relation to our data practices. If you have questions, please contact the DPO/data privacy manager using the details set out below. The Data Protection Officer/Data Privacy Manager, Travelmood Limited, Origin One, 108 High Street, Crawley, West Sussex RH10 1BD This privacy notice version was last updated on 10th May 2018.

#### 13. Departure Documents

We issue Departure Documents for your booking. All the information contained therein will be deemed to be part of the contract. Your Departure Documents will be sent to you by email or post, depending on the type of booking you have made, approximately 21 days before your holiday. Further copies can be obtained from us by contacting Customer Services (see above) or from Travelmood Limited, The Atrium, London Road, Crawley, West Sussex, RH10 9SR. Departure Documents contain up-to-date definitive information about the itinerary and travel arrangements. Should there be a discrepancy between the information in the brochure or website, prior documentation and the final Departure Documents we send to you, the information in the Departure Documents supersedes the previous information and will be considered the most up-to-date and accurate.

#### 14. Special Requests

We will consider special requests such as vegetarian meals, high or low floor preferences in the accommodation, when you book. We will tell you whether there is a charge for the request. We can only guarantee requests for which there is a charge, or those that are confirmed in writing. It is your responsibility to advise us of any special requirements.

#### 15. Participation Requirements

All clients are expected to satisfy themselves prior to booking that they are fit and able to complete the itinerary of their chosen holiday as described in this brochure. Anyone suffering from mobility impairment, illness or disability or undergoing treatment for any physical or medical condition must declare the true nature of such condition at the time of booking and make arrangements for the provision of any medication or other treatment which may be required during the holiday. Failure to make such disclosure will constitute a breach of these booking conditions and result in such persons being excluded from the holiday in which case all monies paid will be forfeit. Unaccompanied passengers under the age of

18 years need a letter of consent from a parent or legal guardian. The minimum age of unaccompanied travel is 16 years on the date of departure. For stays in the USA, at least one person per room staying at any hotel must be at least 21 years of age on the date of travel and a credit card with credit to be held as a deposit is required to check in. Credit cards are required in many hotels and for all vehicle hire for all destinations. A deposit amount will be held. You must ensure you have a card and the relevant credit available.

#### 16. Law & Jurisdiction

If you booked your holiday in any jurisdiction other than in Scotland or Northern Ireland (including any booking via the internet), this contract, and any other claim or dispute arising from or related to this contract, will be governed by English law and the courts of England and Wales shall have exclusive jurisdiction over any claim arising out of it. If you booked your holiday in Scotland, this contract, and any claim or dispute arising from or related to this contract, will be governed by Scottish law and the courts of Scotland shall have exclusive jurisdiction over any claim arising out of it. If you booked your holiday in Northern Ireland, this contract, and any claim or dispute arising from or related to this contract, will be governed by Northern Irish law and the courts of Northern Ireland shall have exclusive jurisdiction over any claim arising out of it.

#### 17. Brochure Validity

We published this brochure in August 2018 and the details and prices contained in it are valid from 1st September 2018 until publication of any revised edition, or we or your travel agent inform you of different prices. Prices were accurate at the date of publication, but could have changed since then. Your travel agent or our travel advisor will be able to confirm the price before you book. Holidays in this brochure operate from 1st September 2018 to 31st March 2020.





Experts in Australia, New Zealand & South Pacific



PLEASE CALL OUR EXPERT TRAVEL DESIGNERS

**FREEPHONE 0808 252 4276\***

\*Calls are free from landlines, mobiles and other providers' charges may vary.

OR VISIT

**AUSTRAVEL.COM**

OPEN 7 DAYS A WEEK

Mon-Thurs – 9am - 7pm

Fri – Sat 9am - 6pm

Sun – 10am - 4pm